

This document was produced  
by scanning the original publication.

75 1

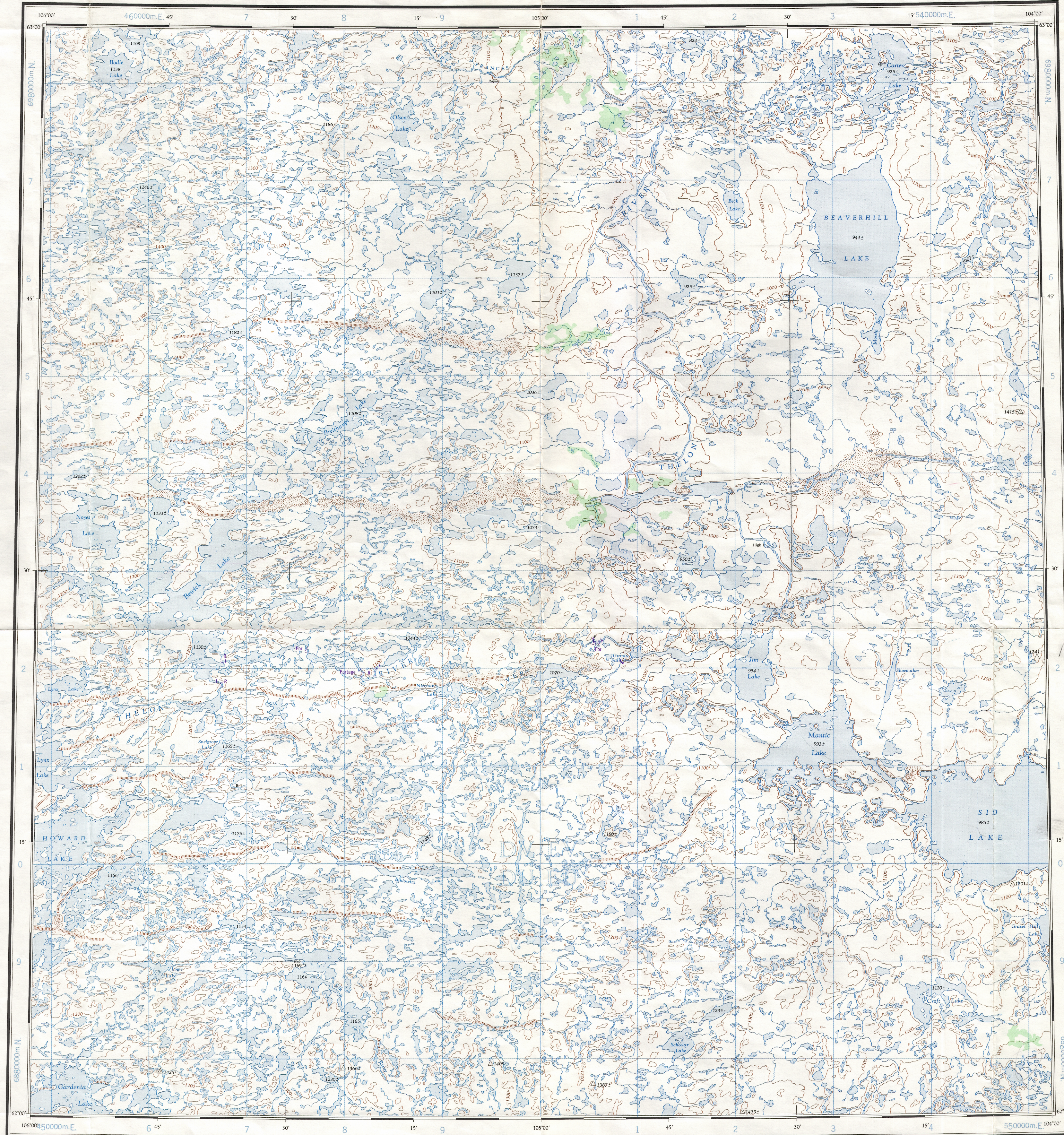
1:250,000

CANADA

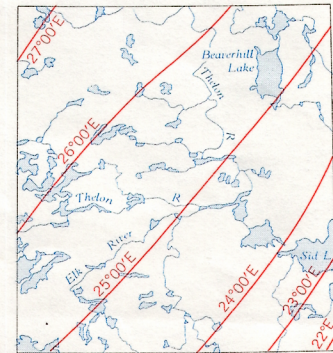
EDITION 2 (1977)

75 1

Refer to  
this map as:  
75 1  
EDITION 2 ASE  
SERIES A 502



THE DECLINATION OF THE COMPASS NEEDLE 1963  
DÉCLINAISON MAGNÉTIQUE EN 1963



The daily change of the North Magnetic Pole causes the magnetic  
compass to be very erratic in this area.  
La variation du pôle Nord magnétique affaiblit le compas  
magnétique dans cette région.

Produced by the ARMY SURVEY ESTABLISHMENT, R.C.E.  
Information depicted current as of 1961. Printed 1965.  
Copies may be obtained from the Map Distribution Office,  
Department of Mines and Technical Surveys, Ottawa.  
Interim corrections 1977

Roads: Routes: loose surface, all weather... de gravier, toute saison... cart track, trail... de terre, sentier... Spot elevation; precise, approximate... Point coté; précis, approximatif... Boundary monument... borne-frontière... Pingo... Bulles de terre... Depression contours... Courbes de crevette... Cliff or low relief... Falaise ou relief peu accentué... Esker... Escher...

Miles 5 0 5 10 15 20 25 30  
Kilometres 5 0 5 10 15 20 25 30

## BEAVERHILL LAKE

DISTRICT OF MACKENZIE  
NORTHWEST TERRITORIES

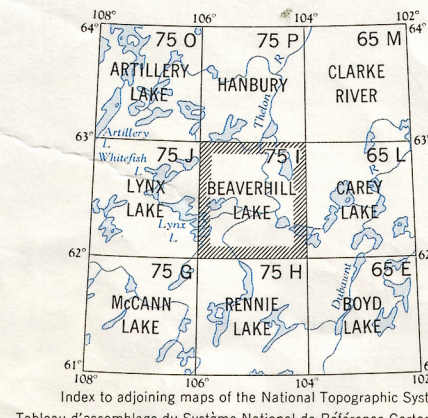
Scale 1:250,000 Échelle

Transverse Mercator Projection  
North American Datum 1927  
Contour Interval 100 feet  
Elevations in feet above Mean Sea Level

Projection transverse de Mercator  
Réseau géodésique nord-américain unifié 1927  
Équidistance des courbes 100 pieds  
Élévations en pieds au-dessus du niveau moyen de la mer

Publiée par le SERVICE TOPOGRAPHIQUE DE L'ARMÉE,  
(G.R.C.). Renseignements à jour en 1961. Imprimé en 1965.  
Ces cartes sont en vente au Bureau de distribution des cartes,  
ministère des Mines et des Relevés techniques, Ottawa.  
Corrections Provisoires, 1977

Building... Bâtiment... Intermittent stream... Cours d'eau intermittent... Post office... Bureau de poste... Church... Église... School... École... Astronomical monument... Repère astronomique... R.C.M.P. Detachment... Poste de la G.R.C... Horizontal control point... Point géodésique... Landing ground... Piste d'atterrissage... Tundra polygons... Sols polygonaux... Tundra ponds... Étangs de toundra...



BEAVERHILL LAKE  
75 1  
EDITION 2 (1977)

TO GIVE A REFERENCE TO NEAREST 1000 METRES  
EXAMPLE: FALLS  
SQUARE: Read letters of 100,000 m. square EV  
EASTING: Read number on grid line immediately to left of point  
Estimate tenths of a square from this line eastward to point.  
NORTHING: Read number on grid line immediately below point.  
Estimate tenths of a square from this line northward to point.  
MILITARY GRID REFERENCE (to nearest 1,000 metres) EV0523  
If reporting beyond 18° in any direction, prefix Grid Zone Designation as: 13VEV0523

TEN THOUSAND METRE  
UNIVERSAL TRANSVERSE MERCATOR GRID  
ZONE 13

TOPOGRAPHICAL SURVEY DIRECTORATE  
SERVICE TOPOGRAPHIQUE  
C. C. APPROVED  
C.Q. APPROUVE

EDITION 2 BACK  
D TEAM FOR OVERPRINTING  
20-12-90  
MPD

Reprint.  
And Printing to correct  
Registration