

This document was produced
by scanning the original publication.
Ce document est le produit d'une
numérisation par balayage
de la publication originale.

75 N

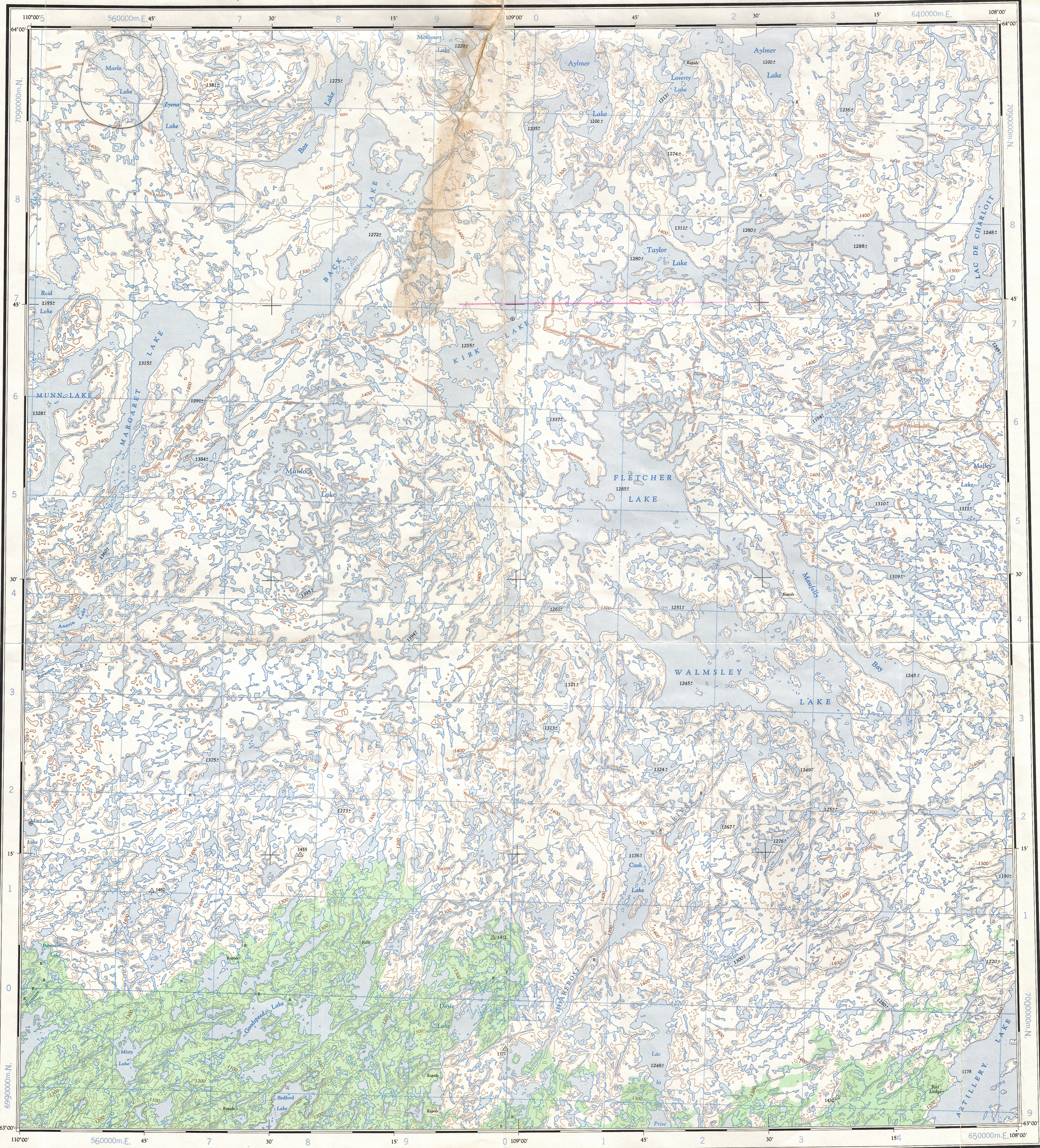
1:250,000

CANADA

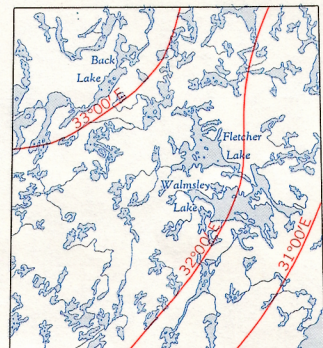
EDITION 3

75 N

Refer to
this map as:
75 N
EDITION 3 ASE
SERIES A 502



THE DECLINATION OF THE COMPASS NEEDLE 1962
DÉCLINAISON MAGNÉTIQUE EN 1962



The declination of the compass needle is decreasing
7 minutes annually.
La déclinaison magnétique décroît de 7 minutes annuellement.

Produced by the ARMY SURVEY ESTABLISHMENT, R.C.E.
Information depicted current as of 1955.
Copies may be obtained from the Map Distribution Office,
Department of Mines and Technical Surveys, Ottawa.

Roads:
loose surface, all weather de gravier, toute saison
cart track trail de terre, sentier
Spot elevation: precise, approximate Point coté, précis, approximatif 910 - 950 :
Boundary monument Bonne-frontière
Pingo Buttes de terre
Depression contours Contours de coteau
Cliff or low relief Falaise ou relief peu accidenté
Esker Esker

Miles 5 10 15 20
Kilometres 5 10 15 20 25 30

WALMSLEY LAKE

DISTRICT OF MACKENZIE
NORTHWEST TERRITORIES

Scale 1:250,000 Échelle

Transverse Mercator Projection
North American Datum 1927
Contour Interval 100 feet
Elevations in feet above Mean Sea Level

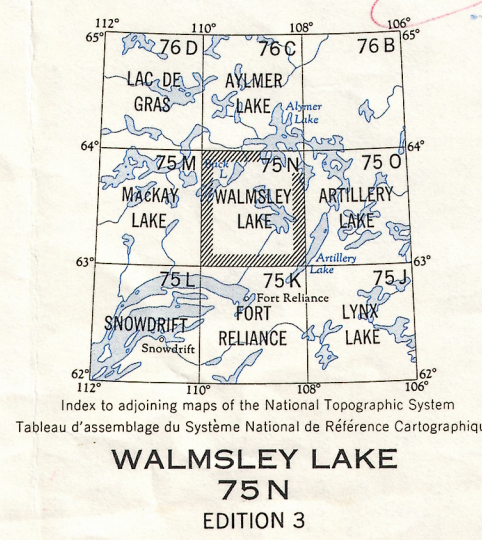
Projection transverse de Mercator
Réseau géodésique nord-américain unifié 1927
Équidistance des courbes: 100 pieds
Élévations en pieds au-dessus du niveau moyen de la mer

Publié par le SERVICE TOPOGRAPHIQUE DE L'ARMÉE,
(G.R.C.). Renseignements à jour en 1955.
Ces cartes sont en vente au Bureau de distribution des cartes,
ministère des Mines et des Relevés techniques, Ottawa.

Building Bâtiment
Post office Bureau de poste
Church Église
School École
Astronomical monument Repère astronomique
R.C.M.P. Detachment Poste de la G.R.C.
Horizontal control point Point géodésique
Landing ground Piste d'atterrissage
Intermittent stream Cours d'eau intermittent
Marsh or Swamp Marais ou marécage
String bogs Marais en chapelet
Icefield or Glacier Champ de glace ou glacier
Tundra polygons Sols polygonaux
Tundra ponds Étangs de tourbière

100,000 M. SQUARE IDENTIFICATION
GRID ZONE DESIGNATION
12V
WEIXE
WEIXE
6
TO GIVE A REFERENCE TO NEAREST 1000 METRES
EXAMPLE: RAPIDS
SQUARE: Read letters of 100,000 m. square XF
EASTING: Read number on grid line immediately to left of point
Estimate tenths of a square from this line eastward to point.
NORTHING: Read number on grid line immediately below point
Estimate tenths of a square from this line northward to point.
MILITARY GRID REFERENCE (to nearest 1,000 metres) XF1517
If reporting beyond 18° in any direction, prefix Grid Zone Designation as: 12VXF1517

TEN THOUSAND METRE
UNIVERSAL TRANSVERSE MERCATOR GRID
ZONE 12



TO RAMSAY
FOR REPAIRS
16-01-85
MR [71]
15-01-85
MH

repaired & corrected 27/03/85

DATE 10 Dec 79
Q.C. APPROVES RELEASE
C.O. APPROUVE

75-N

Print