

This document was produced
by scanning the original publication.
Ce document est le produit d'une
numérisation par balayage
de la publication originale.

76C

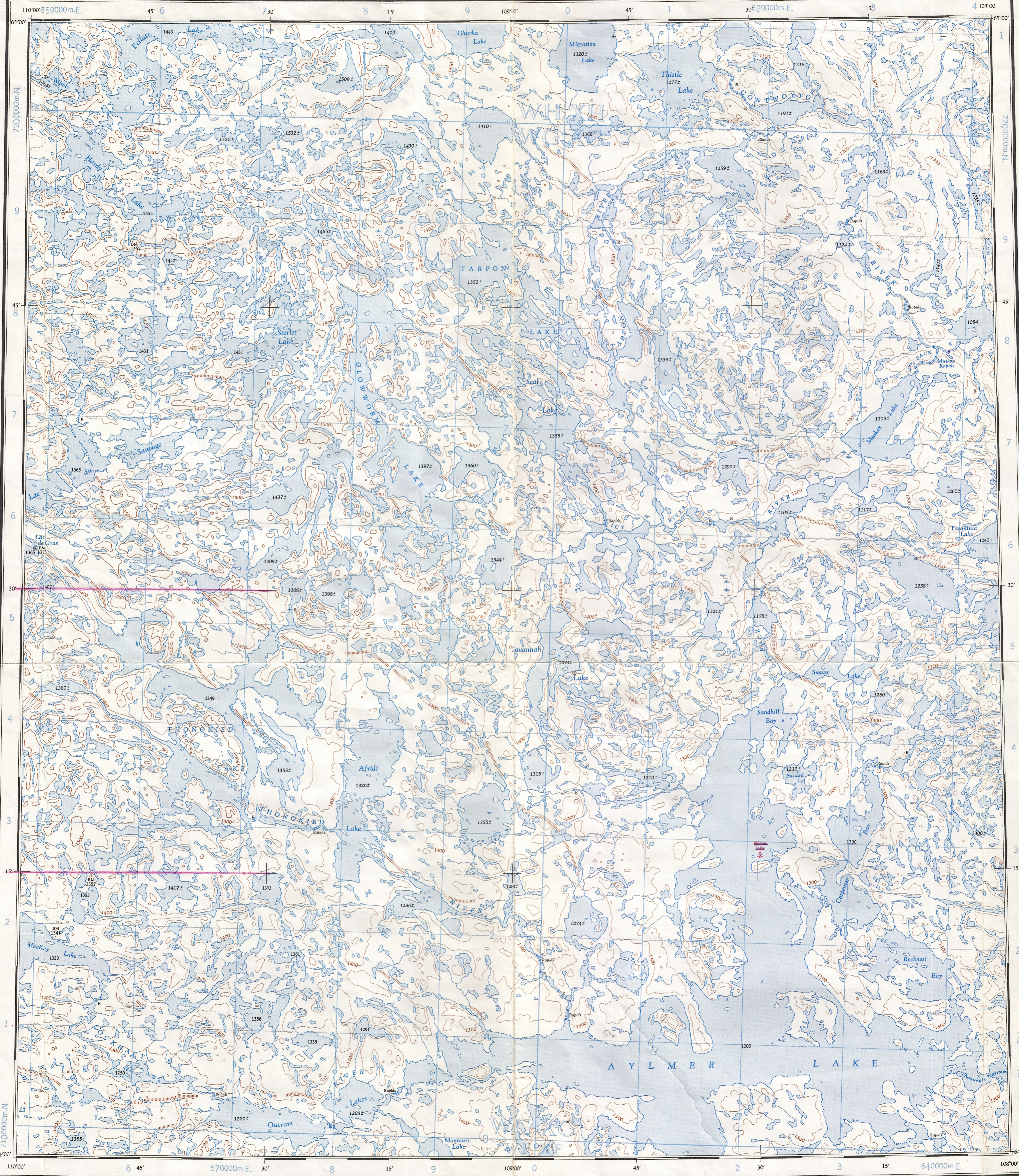
1:250,000

CANADA

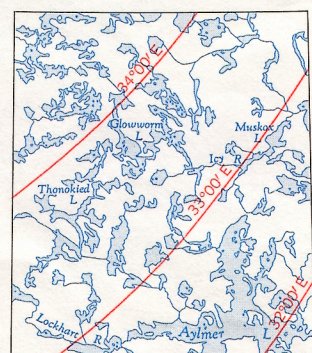
EDITION 3 (1977)

76C

Refer to
this map as:
76 C
EDITION 3 ASE
SERIES A 502



THE DECLINATION OF THE COMPASS NEEDLE 1963
DÉCLINAISON MAGNÉTIQUE EN 1963



The declination of the compass needle is decreasing
7.5 minutes annually.
La déclinaison magnétique décroît de 7.5 minutes annuellement.

Produced by the ARMY SURVEY ESTABLISHMENT, R.C.E.
Information depicted current as of 1963. Printed 1964.
Copies may be obtained from the Map Distribution Office,
Department of Mines and Technical Surveys, Ottawa.
Interim corrections 1977.

Roads: loose surface, all weather... de gravier, toute saison... dry weather
cart track, trail... de terre, sentier...
Spot elevation: precise, approximate... Point coté: précis, approximatif... 900 - 950
Boundary monument... Borne-frontière...
Pings... Buttes de terre...
Depression contour... Courbes de cuvette...
Cliff or low relief... Falaise ou relief peu accentué...
Esker... Esker...

Miles 5 0 10 15 20
Kilometres 5 0 10 15 20 30

Transverse Mercator Projection
North American Datum 1927
Contour Interval 100 feet
Elevations in feet above Mean Sea Level

AYLMER LAKE

DISTRICT OF MACKENZIE
NORTHWEST TERRITORIES

Scale 1:250,000 Échelle

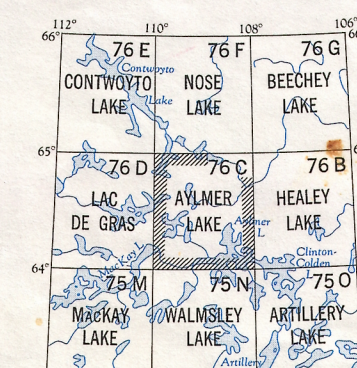
Projection transverse de Mercator
Réseau géodésique nord-américain unifié 1927
Équidistance des courbes: 100 pieds
Élévations en pieds au-dessus du niveau moyen de la mer

Publiée par le SERVICE TOPOGRAPHIQUE DE L'ARMÉE,
(G.R.C.). Renseignements à jour en 1963. Imprimée en 1964.
Ces cartes sont en vente au Bureau de distribution des cartes,
ministère des Mines et des Techniques, Ottawa.
Corrections Provisoire, 1977.

Building... Bâtiment... Intermittent stream... Cours d'eau intermittent...
Post office... Bureau de poste... Intermittent Lake... Lac intermittent...
Church... Église... Rapids; falls... Rapides; chute...
School... École... Marsh or Swamp... Marais ou marécage...
Astronomical monument... Repère astronomique... String bogs... Marais en chapelier...
R.C.M.P. Detachment... Poste de la G.R.C... Icefield or Glacier... Champ de glace ou glacier...
Horizontal control point... Point géodésique... Tundra polygons... Sols polygonaux...
Seaplane anchorage... Amarrage d'hydravions... Tundra ponds... Étang de toundra...

GRID ZONE
DESIGNATION
12W
100,000 M. SQUARE IDENTIFICATION
WGIXG
WGIXF
WGIXH
WGIXJ
WGIXK
WGIXL
WGIXM
WGIXN
WGIXO
WGIXP
WGIXQ
WGIXR
WGIXS
WGIXT
WGIXU
WGIXV
WGIXW
WGIXX
WGIXY
WGIXZ
WGIXAA
WGIXAB
WGIXAC
WGIXAD
WGIXAE
WGIXAF
WGIXAG
WGIXAH
WGIXAI
WGIXAJ
WGIXAK
WGIXAL
WGIXAM
WGIXAN
WGIXAO
WGIXAP
WGIXAQ
WGIXAR
WGIXAS
WGIXAT
WGIXAU
WGIXAV
WGIXAW
WGIXAX
WGIXAY
WGIXAZ
WGIXBA
WGIXBB
WGIXBC
WGIXBD
WGIXBE
WGIXBF
WGIXBG
WGIXBH
WGIXBI
WGIXBJ
WGIXBK
WGIXBL
WGIXBM
WGIXBN
WGIXBO
WGIXBP
WGIXBQ
WGIXBR
WGIXBS
WGIXBT
WGIXBU
WGIXBV
WGIXBW
WGIXBX
WGIXBY
WGIXBZ
WGIXCA
WGIXCB
WGIXCC
WGIXCD
WGIXCE
WGIXCF
WGIXCG
WGIXCH
WGIXCI
WGIXCJ
WGIXCK
WGIXCL
WGIXCM
WGIXCN
WGIXCO
WGIXCP
WGIXCQ
WGIXCR
WGIXCS
WGIXCT
WGIXCU
WGIXCV
WGIXCW
WGIXCX
WGIXCY
WGIXCZ
WGIXDA
WGIXDB
WGIXDC
WGIXDD
WGIXDE
WGIXDF
WGIXDG
WGIXDH
WGIXDI
WGIXDJ
WGIXDK
WGIXDL
WGIXDM
WGIXDN
WGIXDO
WGIXDP
WGIXDQ
WGIXDR
WGIXDS
WGIXDT
WGIXDU
WGIXDV
WGIXDW
WGIXDX
WGIXDY
WGIXDZ
WGIXEA
WGIXEB
WGIXEC
WGIXED
WGIXEE
WGIXEF
WGIXEG
WGIXEH
WGIXEI
WGIXEJ
WGIXEK
WGIXEL
WGIXEM
WGIXEN
WGIXEO
WGIXEP
WGIXEQ
WGIXER
WGIXES
WGIXET
WGIXEU
WGIXEV
WGIXEW
WGIXEX
WGIXEY
WGIXEZ
WGIXFA
WGIXFB
WGIXFC
WGIXFD
WGIXFE
WGIXFF
WGIXFG
WGIXFH
WGIXFI
WGIXFJ
WGIXFK
WGIXFL
WGIXFM
WGIXFN
WGIXFO
WGIXFP
WGIXFQ
WGIXFR
WGIXFS
WGIXFT
WGIXFU
WGIXFV
WGIXFW
WGIXFX
WGIXFY
WGIXFZ
WGIXGA
WGIXGB
WGIXGC
WGIXGD
WGIXGE
WGIXGF
WGIXGG
WGIXGH
WGIXGI
WGIXGJ
WGIXGK
WGIXGL
WGIXGM
WGIXGN
WGIXGO
WGIXGP
WGIXGQ
WGIXGR
WGIXGS
WGIXGT
WGIXGU
WGIXGV
WGIXGW
WGIXGX
WGIXGY
WGIXGZ
WGIXHA
WGIXHB
WGIXHC
WGIXHD
WGIXHE
WGIXHF
WGIXHG
WGIXHH
WGIXHI
WGIXHJ
WGIXHK
WGIXHL
WGIXHM
WGIXHN
WGIXHO
WGIXHP
WGIXHQ
WGIXHR
WGIXHS
WGIXHT
WGIXHU
WGIXHV
WGIXHW
WGIXHX
WGIXHY
WGIXHZ
WGIXIA
WGIXIB
WGIXIC
WGIXID
WGIXIE
WGIXIF
WGIXIG
WGIXIH
WGIXII
WGIXIJ
WGIXIK
WGIXIL
WGIXIM
WGIXIN
WGIXIO
WGIXIP
WGIXIQ
WGIXIR
WGIXIS
WGIXIT
WGIXIU
WGIXIV
WGIXIW
WGIXIX
WGIXIY
WGIXIZ
WGIXJA
WGIXJB
WGIXJC
WGIXJD
WGIXJE
WGIXJF
WGIXJG
WGIXJH
WGIXJI
WGIXJJ
WGIXJK
WGIXJL
WGIXJM
WGIXJN
WGIXJO
WGIXJP
WGIXJQ
WGIXJR
WGIXJS
WGIXJT
WGIXJU
WGIXJV
WGIXJW
WGIXJX
WGIXJY
WGIXJZ
WGIXKA
WGIXKB
WGIXKC
WGIXKD
WGIXKE
WGIXKF
WGIXKG
WGIXKH
WGIXKI
WGIXKJ
WGIXKK
WGIXKL
WGIXKM
WGIXKN
WGIXKO
WGIXKP
WGIXKQ
WGIXKR
WGIXKS
WGIXKT
WGIXKU
WGIXKV
WGIXKW
WGIXKX
WGIXKY
WGIXKZ
WGIXLA
WGIXLB
WGIXLC
WGIXLD
WGIXLE
WGIXLF
WGIXLG
WGIXLH
WGIXLI
WGIXLJ
WGIXLK
WGIXLM
WGIXLN
WGIXLO
WGIXLP
WGIXLQ
WGIXLR
WGIXLS
WGIXLT
WGIXLU
WGIXLV
WGIXLW
WGIXLX
WGIXLY
WGIXLZ
WGIXMA
WGIXMB
WGIXMC
WGIXMD
WGIXME
WGIXMF
WGIXMG
WGIXMH
WGIXMI
WGIXMJ
WGIXMK
WGIXML
WGIXMN
WGIXMO
WGIXMP
WGIXMQ
WGIXMR
WGIXMS
WGIXMT
WGIXMU
WGIXMV
WGIXMW
WGIXMX
WGIXMY
WGIXMZ
WGIXNA
WGIXNB
WGIXNC
WGIXND
WGIXNE
WGIXNF
WGIXNG
WGIXNH
WGIXNI
WGIXNJ
WGIXNK
WGIXNL
WGIXNM
WGIXNN
WGIXNO
WGIXNP
WGIXNQ
WGIXNR
WGIXNS
WGIXNT
WGIXNU
WGIXNV
WGIXNW
WGIXNX
WGIXNY
WGIXNZ
WGIXOA
WGIXOB
WGIXOC
WGIXOD
WGIXOE
WGIXOF
WGIXOG
WGIXOH
WGIXOI
WGIXOJ
WGIXOK
WGIXOL
WGIXOM
WGIXON
WGIXOO
WGIXOP
WGIXOQ
WGIXOR
WGIXOS
WGIXOT
WGIXOU
WGIXOV
WGIXOW
WGIXOX
WGIXOY
WGIXOZ
WGIXPA
WGIXPB
WGIXPC
WGIXPD
WGIXPE
WGIXPF
WGIXPG
WGIXPH
WGIXPI
WGIXPJ
WGIXPK
WGIXPL
WGIXPM
WGIXPN
WGIXPO
WGIXPP
WGIXPQ
WGIXPR
WGIXPS
WGIXPT
WGIXPU
WGIXPV
WGIXPW
WGIXPX
WGIXPY
WGIXPZ
WGIXQA
WGIXQB
WGIXQC
WGIXQD
WGIXQE
WGIXQF
WGIXQG
WGIXQH
WGIXQI
WGIXQJ
WGIXQK
WGIXQL
WGIXQM
WGIXQN
WGIXQO
WGIXQP
WGIXQQ
WGIXQR
WGIXQS
WGIXQT
WGIXQU
WGIXQV
WGIXQW
WGIXQX
WGIXQY
WGIXQZ
WGIXRA
WGIXRB
WGIXRC
WGIXRD
WGIXRE
WGIXRF
WGIXRG
WGIXRH
WGIXRI
WGIXRJ
WGIXRK
WGIXRL
WGIXRM
WGIXRN
WGIXRO
WGIXRP
WGIXRQ
WGIXRR
WGIXRS
WGIXRT
WGIXRU
WGIXRV
WGIXRW
WGIXRX
WGIXRY
WGIXRZ
WGIXSA
WGIXSB
WGIXSC
WGIXSD
WGIXSE
WGIXSF
WGIXSG
WGIXSH
WGIXSI
WGIXSJ
WGIXSK
WGIXSL
WGIXSM
WGIXSN
WGIXSO
WGIXSP
WGIXSQ
WGIXSR
WGIXSS
WGIXST
WGIXSU
WGIXSV
WGIXSW
WGIXSX
WGIXSY
WGIXSZ
WGIXTA
WGIXTB
WGIXTC
WGIXTD
WGIXTE
WGIXTF
WGIXTG
WGIXTH
WGIXTI
WGIXTJ
WGIXTK
WGIXTL
WGIXTM
WGIXTN
WGIXTO
WGIXTP
WGIXTQ
WGIXTR
WGIXTS
WGIXTT
WGIXTU
WGIXTV
WGIXTW
WGIXTX
WGIXTY
WGIXTZ
WGIXUA
WGIXUB
WGIXUC
WGIXUD
WGIXUE
WGIXUF
WGIXUG
WGIXUH
WGIXUI
WGIXUJ
WGIXUK
WGIXUL
WGIXUM
WGIXUN
WGIXUO
WGIXUP
WGIXUQ
WGIXUR
WGIXUS
WGIXUT
WGIXUU
WGIXUV
WGIXUW
WGIXUX
WGIXUY
WGIXUZ
WGIXVA
WGIXVB
WGIXVC
WGIXVD
WGIXVE
WGIXVF
WGIXVG
WGIXVH
WGIXVI
WGIXVJ
WGIXVK
WGIXVL
WGIXVM
WGIXVN
WGIXVO
WGIXVP
WGIXVQ
WGIXVR
WGIXVS
WGIXVT
WGIXVU
WGIXVV
WGIXVW
WGIXVX
WGIXVY
WGIXVZ
WGIXWA
WGIXWB
WGIXWC
WGIXWD
WGIXWE
WGIXWF
WGIXWG
WGIXWH
WGIXWI
WGIXWJ
WGIXWK
WGIXWL
WGIXWM
WGIXWN
WGIXWO
WGIXWP
WGIXWQ
WGIXWR
WGIXWS
WGIXWT
WGIXWU
WGIXWV
WGIXWW
WGIXWX
WGIXWY
WGIXWZ
WGIXXA
WGIXXB
WGIXXC
WGIXXD
WGIXXE
WGIXXF
WGIXXG
WGIXXH
WGIXXI
WGIXXJ
WGIXXK
WGIXXL
WGIXXM
WGIXXN
WGIXXO
WGIXXP
WGIXXQ
WGIXXR
WGIXXS
WGIXXT
WGIXXU
WGIXXV
WGIXXW
WGIXXX
WGIXXY
WGIXXZ
WGIXYA
WGIXYB
WGIXYC
WGIXYD
WGIXYE
WGIXYF
WGIXYG
WGIXYH
WGIXYI
WGIXYJ
WGIXYK
WGIXYL
WGIXYM
WGIXYN
WGIXYO
WGIXYP
WGIXYQ
WGIXYR
WGIXYS
WGIXYT
WGIXYU
WGIXYV
WGIXYW
WGIXYX
WGIXYY
WGIXYZ
WGIXZA
WGIXZB
WGIXZC
WGIXZD
WGIXZE
WGIXZF
WGIXZG
WGIXZH
WGIXZI
WGIXZJ
WGIXZK
WGIXZL
WGIXZM
WGIXZN
WGIXZO
WGIXZP
WGIXZQ
WGIXZR
WGIXZS
WGIXZT
WGIXZU
WGIXZV
WGIXZW
WGIXZX
WGIXZY
WGIXZZ

TEN THOUSAND METRE
UNIVERSAL TRANSVERSE MERCATOR GRID
ZONE 12



AYLMER LAKE
76C
EDITION 3 (1977)

TOPOGRAPHICAL SURVEY DIRECTORATE
SERVICE TOPOGRAPHIQUE
C. Q. APPROVES RELEASE
C. Q. APPROUVE

Reprints