

This document was produced  
numération par balayage  
de la publication originale.

76 J

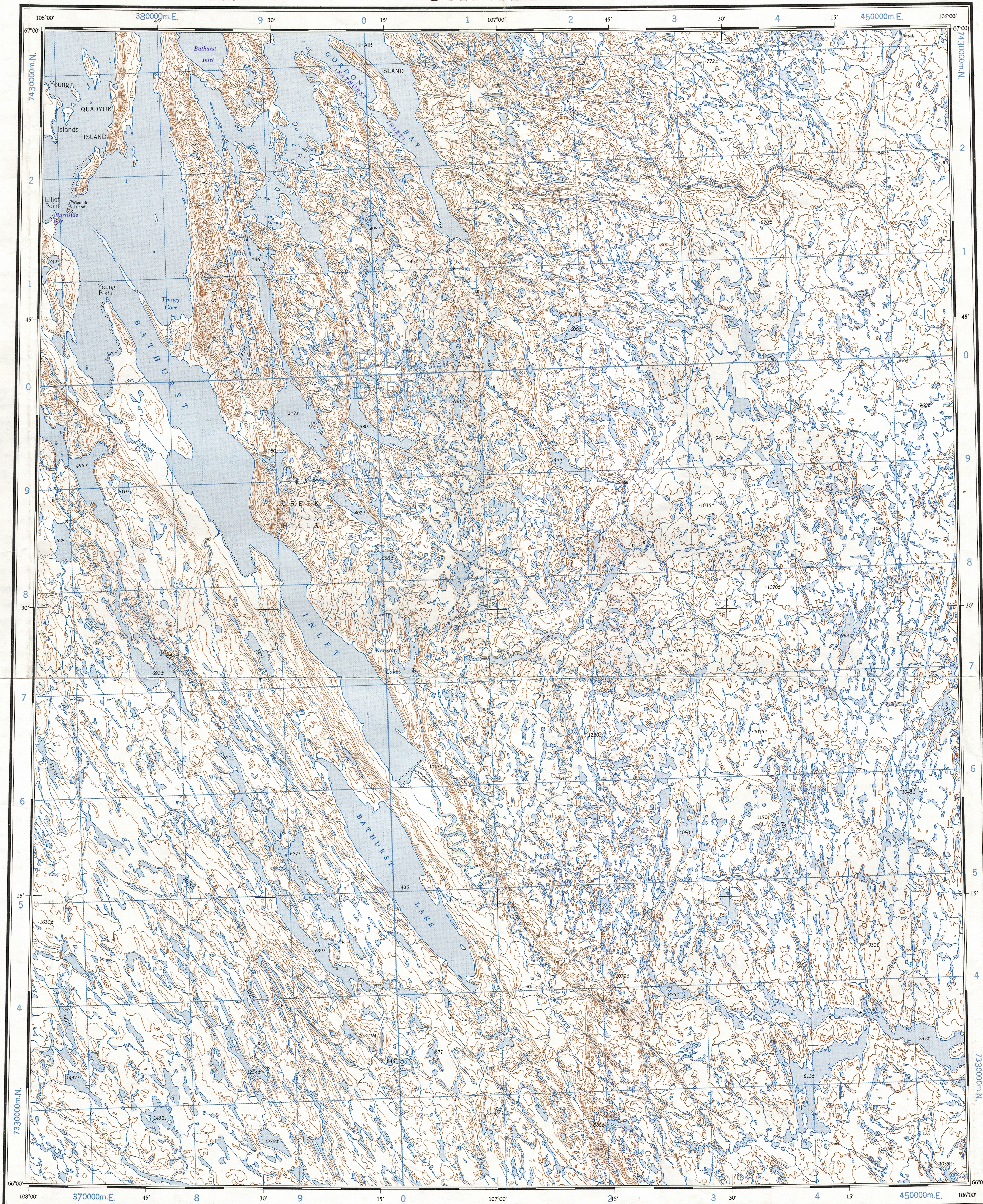
1:250,000

CANADA

EDITION 1 (1982)

76 J

Refer to  
this map as:  
76 J  
EDITION 1 ASE  
SERIES A 502



GRID ZONE  
DESIGNATION  
13 W

100,000 M. SQUARE IDENTIFICATION  
CEDE  
CD DD  
40

TO GIVE A REFERENCE TO NEAREST 1000 METRES  
EXAMPLE: STREAM JUNCTION

SQUARE: Read letters of 100,000 m. square CD

EASTING: Read number on grid line immediately to left of point  
Estimate tenths of a square from this line eastward to point

NORTHING: Read number on grid line immediately below point  
Estimate tenths of a square from this line northward to point

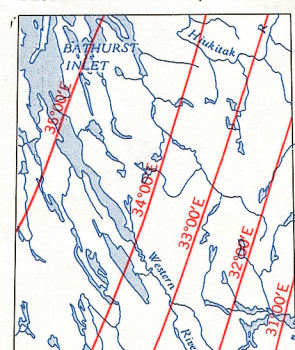
MILITARY GRID REFERENCE (to nearest 1,000 metres) CD9484

If reporting beyond 18° in any direction, prefix Grid Zone Designation as: 13WCD9484

TEN THOUSAND METRE  
UNIVERSAL TRANSVERSE MERCATOR GRID  
ZONE 13

TOPOGRAPHICAL SURVEY DIRECTORATE  
SERVICE TOPOGRAPHIQUE  
DATE 8-11-83  
Q.C. APPROVES RELEASE  
C.Q. APPROUVE

THE DECLINATION OF THE COMPASS NEEDLE 1964  
DECLINAISON MAGNETIQUE EN 1964



Interim corrections 1981

Produced by the ARMY SURVEY ESTABLISHMENT, R.C.E.  
Information depicted current as of 1964. Printed 1964.

This map was checked in 1980 and found to be up-to-date in all major features.

Copies may be obtained from the Canada Map Office,  
Department of Energy, Mines and Resources, Ottawa,  
or your nearest map dealer.

© 1982, Her Majesty the Queen in Right of Canada,  
Department of Energy, Mines and Resources.

On a vérifié cette carte en 1980; nous avons constaté que toutes ses caractéristiques principales étaient à jour.

Ces cartes sont en vente au Bureau des Cartes du Canada,  
ministère de l'Énergie, des Mines et des Ressources, Ottawa,  
ou chez le vendeur le plus près.

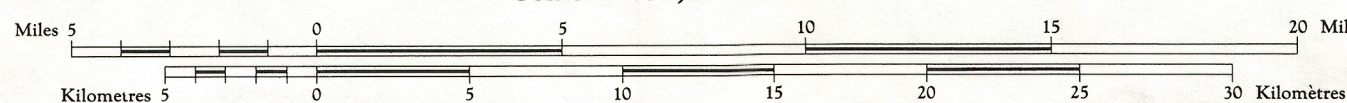
© 1982, Sa Majesté La Reine du Chef du Canada,  
Ministère de l'Énergie, des Mines et des Ressources.

## TINNEY HILLS

DISTRICT OF MACKENZIE

NORTHWEST TERRITORIES

Scale 1:250,000 Échelle



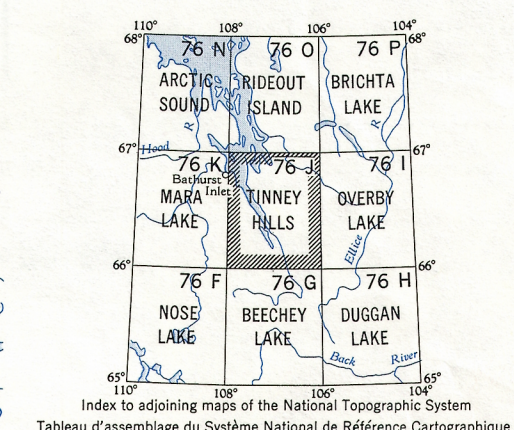
Transverse Mercator Projection  
North American Datum 1927  
Contour Interval 100 feet  
Elevations in feet above Mean Sea Level

Projection transverse de Mercator  
Réseau géodésique nord-américain unifié 1927  
Équidistance des courbes 100 pieds  
Élévations en pieds au-dessus du niveau moyen de la mer

Publiée par le SERVICE TOPOGRAPHIQUE DE L'ARMÉE,  
(G.R.C.), Renseignements à jour en 1964. Imprimée en 1964

Corrections provisoires 1981

Building ..... Bâtiment ..... Intermittent stream ..... Cours d'eau intermittent .....  
Post office ..... Bureau de poste ..... Intermittent lake ..... Lac intermittent .....  
Church ..... Église ..... Rapids; falls ..... Rapides; chute .....  
School ..... École ..... Marsh or Swamp ..... Marais ou marécage .....  
Astronomical monument ..... Repère astronomique ..... String bogs ..... Marais en chaquet .....  
R.C.M.P. Detachment ..... Poste de la G.R.C. ..... Icefield or Glacier ..... Champ de glace ou glacier .....  
Horizontal control point ..... Point géodésique ..... Tundra polygons ..... Sols polygonaux .....  
Landing ground ..... Plate d'atterrissage ..... Tundra ponds ..... Étangs de toundra .....



TINNEY HILLS  
76 J  
EDITION 1 (1982)

76-J