

This document was produced  
by scanning the original publication.  
Ce document est le produit d'une  
numérisation par balayage  
de la publication originale.

76 K

1:250,000

CANADA

EDITION 1

76 K

Refer to  
this map as:  
76K  
EDITION 1 ASE  
SERIES A 502

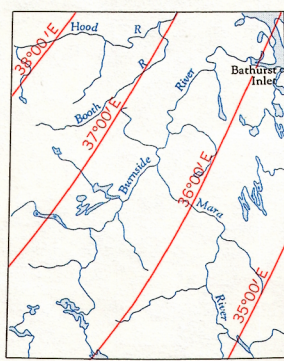


AMR 1600

GRID ZONE DESIGNATION		100,000 M. SQUARE IDENTIFICATION							
12W	74	<table><tr><td>WK</td><td>KK</td></tr><tr><td>WJ</td><td>XJ</td></tr><tr><td colspan="2">6</td></tr></table>		WK	KK	WJ	XJ	6	
		WK	KK						
		WJ	XJ						
6									
TO GIVE A REFERENCE TO NEAREST 1000 METRES									
EXAMPLE: LAKE									
SQUARE: Read letters of 100,000 m. square W J									
EASTING: Read number on grid line immediately to left of point									
Estimate tenths of a square from this line eastward to point									
NORTHING: Read number on grid line immediately below point									
Estimate tenths of a square from this line northward to point									
MILITARY GRID REFERENCE (to nearest 1,000 metres)									
If reporting beyond 18° in any direction, prefix Grid Zone Designation as: 12WWJ8396									

TEN THOUSAND METRE  
UNIVERSAL TRANSVERSE MERCATOR GRID  
ZONE 12

THE DECLINATION OF THE COMPASS NEEDLE 1963  
DECLINAISON MAGNETIQUE EN 1963



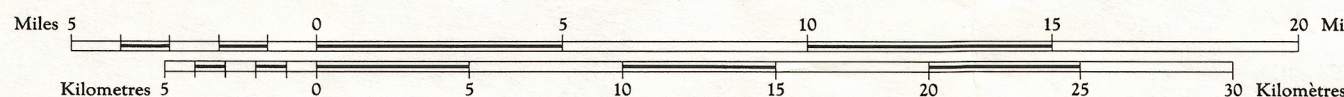
The daily change of the North Magnetic Pole renders the magnetic compass useless in this area.  
La variation diurne du pôle Nord magnétique rend le compas magnétique inutile dans cette région.

Produced by the ARMY SURVEY ESTABLISHMENT, R.C.E.  
Information depicted current as of 1963. Printed 1963.  
Copies may be obtained from the Map Distribution Office,  
Department of Mines and Technical Surveys, Ottawa.

MARA RIVER

DISTRICT OF MACKENZIE  
NORTHWEST TERRITORIES

Scale 1:250,000 Échelle

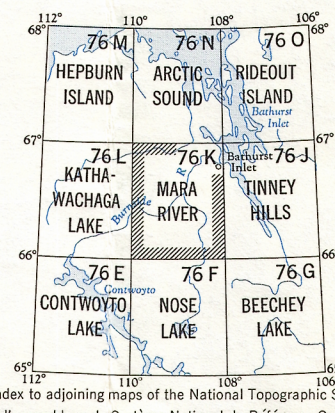


Transverse Mercator Projection  
North American Datum 1927  
Contour Interval 100 feet  
Elevations in feet above Mean Sea Level

Projection transverse de Mercator  
Réseau géodésique nord-américain unifié 1927  
Équidistance des courbes 100 pieds  
Élévations en pieds au-dessus du niveau moyen de la mer

Publiée par le SERVICE TOPOGRAPHIQUE DE L'ARMÉE,  
G.B.C.I. Renseignements à jour en 1963. Imprimée en 1963.  
Ces cartes sont en vente au Bureau de distribution des cartes,  
ministère des Mines et des Relevés techniques, Ottawa.

Building ..... Bâtiment ..... Intermittent stream ..... Cours d'eau intermittent  
Post office ..... Bureau de poste ..... P Intermittent lake ..... Lac intermittent  
Church ..... Église ..... R Rapids; falls ..... Rapides; chute  
School ..... École ..... M Marsh or Swamp ..... Marais ou marécage  
Astronomical monument ..... Repère astronomique ..... S String bogs ..... Marais en chapelet  
R.C.M.P. Detachment ..... Poste de la G.R.C. ..... I Icefield or Glacier ..... Champ de glace ou glacier  
Horizontal control point ..... Pointe géodésique ..... Tundra polygons ..... Sols polygonaux  
Seaplane anchorage ..... Amarrage d'hydravions ..... J Tundra ponds ..... Étangs de toundra



MARA RIVER  
76K  
EDITION 1

TOPOGRAPHICAL SURVEY DIRECTORATE  
SERVICE TOPOGRAPHIQUE  
DATE 14-10-81  
Q.C. APPROVES RELEASE  
C.Q. APPROUVE

OCT -9 1981

76-K