

This document was produced
numération par balayage
de la publication originale.

82 M

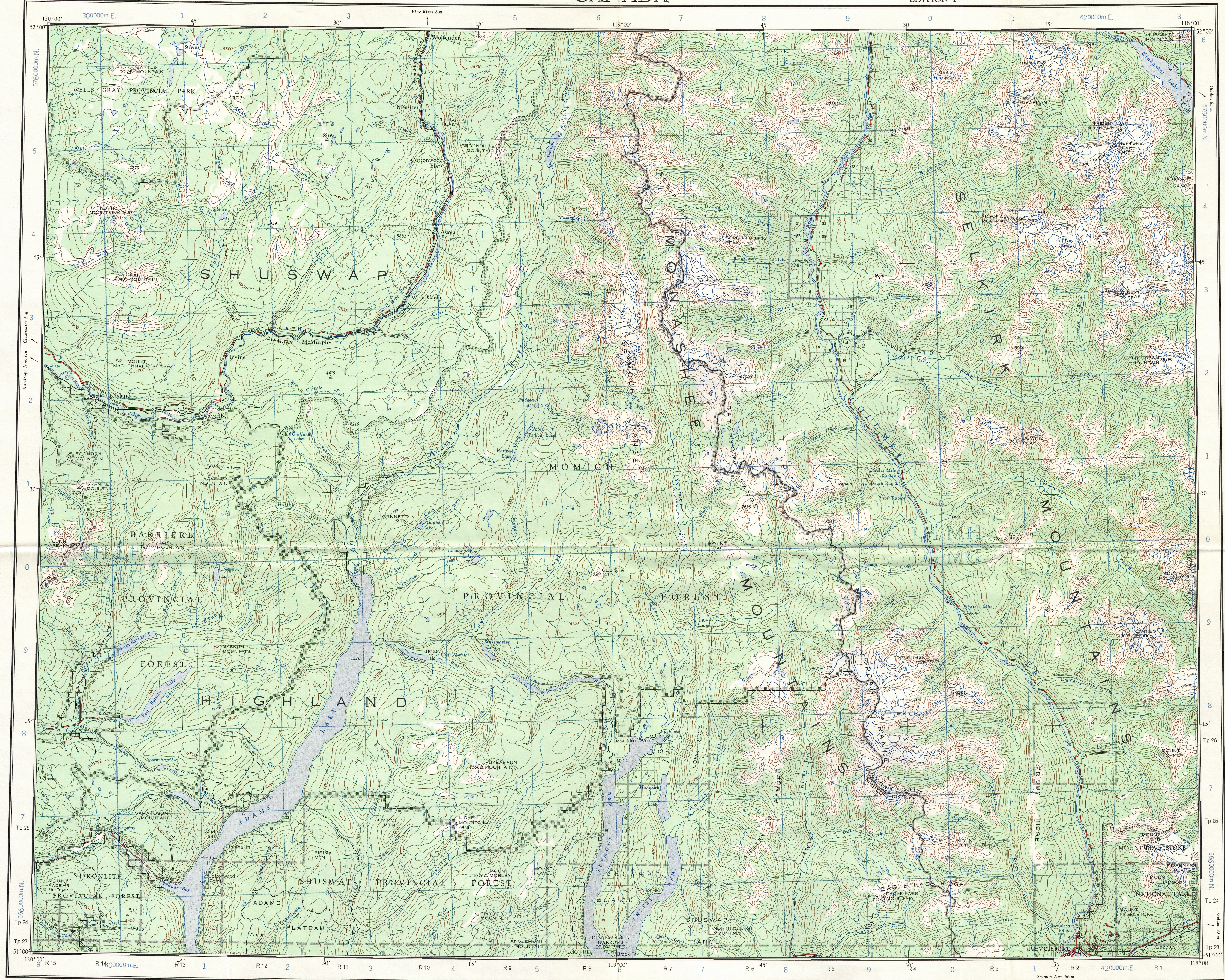
1:250,000

CANADA

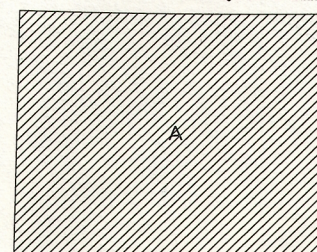
EDITION 1

82 M

Refer to
this map as:
82 M
EDITION 1 ASE
SERIES A 502



RELIABILITY DIAGRAM - CROQUIS D'EXACTITUDE



A - Large scale topographic maps, photogrammetric 1961-1963
A - Cartes à grande échelle (photogrammétrie 1961-1963)

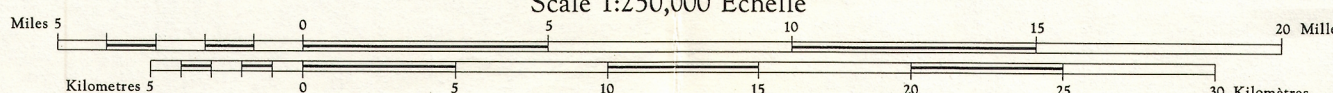
Compiled, 1963, by the SURVEYS AND MAPPING BRANCH,
DEPARTMENT OF MINES AND TECHNICAL SURVEYS.
Printed 1965.

Magnetic declination 1965 varies from 22°41' easterly at
centre of west edge to 23°26' easterly at centre of east
edge. Mean annual change is 3.3' westerly.

Some names on this map are not yet official.
Corrections or additions are invited by the
Surveys and Mapping Branch.

SEYMOUR ARM
BRITISH COLUMBIA

Scale 1:250,000 Échelle



Transverse Mercator Projection
North American Datum 1927
Contour interval 500 feet
Elevations in feet above Mean Sea Level

Projection Transverse de Mercator
Niveau de référence nord-américain, 1927
Équidistance des courbes: 500 pieds
Élévations en pieds au-dessus du niveau moyen de la mer

Copies may be obtained from the Map Distribution Office,
Department of Mines and Technical Surveys, Ottawa.

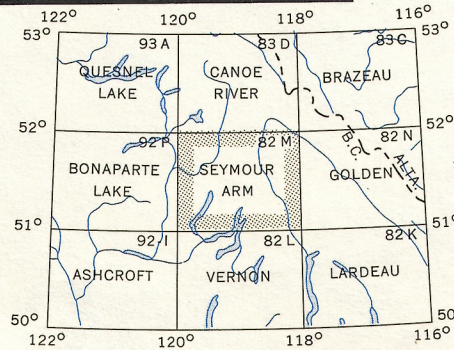
Ces cartes sont en vente au Bureau de distribution des cartes,
ministère des Mines et des Relevés techniques, Ottawa.

Certains noms inscrits sur cette carte ne sont
pas encore officiels. La Direction des levés et
de la cartographie saurait gré au public de lui
signaler corrections et additions.

Rédigée en 1963, par la DIRECTION DES LEVÉS ET DE LA
CARTOGRAPHIE, MINISTÈRE DES MINES ET DES RELEVÉS
TECHNIQUES. Imprimée en 1965.

La déclinaison magnétique pour 1965 varie de 22°41' Est
au centre de la limite Ouest à 23°26' Est au centre de la
limite Est. Variation moyenne annuelle 3.3' Ouest.

Town.....Ville.....
Village or Settlement.....Village ou hameau.....
Post Office.....Bureau de poste.....
Church.....Église.....
School.....École.....
Boundary monument.....Borne frontrière.....
Horizontal control point.....Point géodésique.....
Stream.....Cours d'eau
Intermittent or dry.....Intermittent ou à sec.....
Rapid or falls.....Rapides; chute.....
Marsh or swamp.....Marais ou marécage.....
Lighthouse.....Phare.....
Airport.....Aéroport.....
Ski landing base.....Base d'hydravions.....



Index to adjoining sheets of National
Topographic System
Tableau d'assemblage du Système
National de Référence Cartographique

GRID ZONE DESIGNATION		100,000 M. SQUARE IDENTIFICATION	
11U		KH LH LM LN	57
		KL GL LG LM	3 4

TO GIVE A REFERENCE TO NEAREST 1000 METRES

EXAMPLE: SPOT ELEVATION

SQUARE: Read letters of 100,000 m. square L H
EASTING: Read number on grid line
immediately to left of point
Estimate tenths of a square from
this line eastward to point
NORTHING: Read number on grid line
immediately below point
Estimate tenths of a square from
this line northward to point
MILITARY GRID REFERENCE
(to nearest 1,000 metres) LH7621
If reporting beyond 10° in any direction,
prefix Grid Zone Designation as: 11ULH7621

TEN THOUSAND METRE
UNIVERSAL TRANSVERSE MERCATOR GRID
ZONE 11

SEYMOUR ARM
82 M