

Ce document est le produit d'une numérisation par balayage de la publication originale.  
This document was produced by scanning the original publication.

83 M

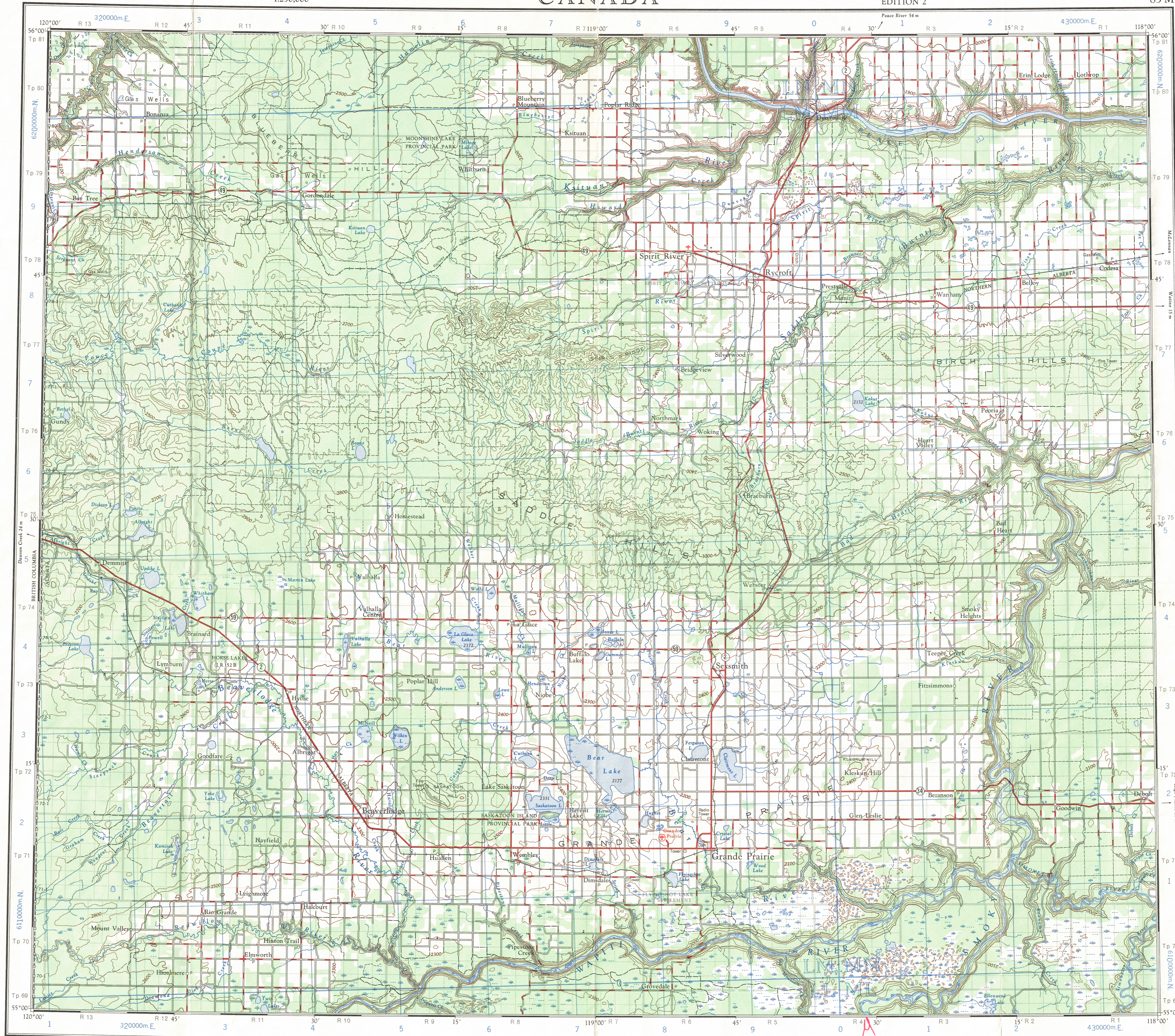
1:250,000

CANADA

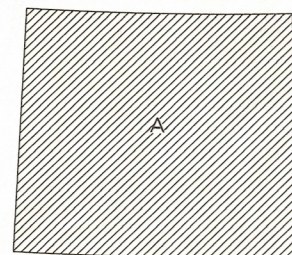
EDITION 2

83 M

Refer to this map as: 83 M EDITION 2 ASE SERIES A 502



RELIABILITY DIAGRAM - CROQUIS D'EXACTITUDE



A - Large scale topographic maps, photogrammetric 1951-1962.  
A - Cartes topographiques à grande échelle (photogrammétrie: 1951-1962)

Compiled by the SURVEYS AND MAPPING BRANCH, DEPARTMENT OF MINES AND TECHNICAL SURVEYS, 1963, from large scale maps. Printed 1964.  
Magnétique déclinaison 1965 varie de 27°01' easterly at centre of west edge to 26°30' easterly at centre of east edge. Mean annual change, 4.0' westerly.

Road  
hard surface, all weather, pavée, toute saison  
loose surface, all weather, de gravier, toute saison  
wagon, cart track, chemin de terre  
Railway, normal gauge  
Depression contours  
Spot Elevation in feet  
Power transmission line

Scale 1:250,000 Échelle  
Kilometres 5 10 15 20 25 30  
Miles 5 10 15 20 25 30

Transverse Mercator Projection  
North American Datum 1927  
Contour Interval 100 feet  
Elevations in feet above Mean Sea Level  
Copies may be obtained from the Map Distribution Office, Department of Mines and Technical Surveys, Ottawa.

Projection Transverse de Mercator  
Niveau de référence nord-américain, 1927  
Équidistance des courbes: 100 pieds  
Élévations en pieds au-dessus du niveau moyen de la mer  
Ces cartes sont en vente au Bureau de distribution des cartes, ministère des Mines et des Relevés techniques, Ottawa.

Rédigé par la DIRECTION DES LEVÉS ET DE LA CARTOGRAPHIE, MINISTÈRE DES MINES ET DES RELEVÉS TECHNIQUES en 1963, d'après des cartes à grande échelle. Imprimé en 1964.  
La déclinaison magnétique pour 1965 varie de 27°01' Est au centre de la limite Ouest à 26°30' Est au centre de la limite Est. Variation moyenne annuelle: 4.0' Ouest.

Ville  
Village or Settlement  
Post Office  
Church  
School  
Boundary monument  
Horizontal control point  
Stream  
Intermittent or dry  
Rapids, falls  
Marsh or swamp  
Lighthouse  
Airport  
Sesplane base

TO GIVE A REFERENCE TO NEAREST 1000 METRES  
EXAMPLE: SCHOOL  
SQUARE: Read letters of 100,000 m. square LM  
EASTING: Read number on grid line immediately to left of point  
Estimate tenths of a square from this line eastward to point  
NORTHING: Read number on grid line immediately below point  
Estimate tenths of a square from this line northward to point  
MILITARY GRID REFERENCE (in metres, 1000 metres)  
If reporting beyond 18° in any direction, prefix Grid Zone Designation as: 11ULM7361

TEN THOUSAND METRE  
UNIVERSAL TRANSVERSE MERCATOR GRID  
ZONE 11

POGRAPHICAL SURVEY DIRECTORATE  
SERVICE TOPOGRAPHIQUE  
C.C. APPROVES RELEASE  
C.C. APPROVE

GRANDE PRAIRIE  
83 M  
EDITION 2