

This document was produced
by scanning the original publication.
Ce document est le produit d'une
numérisation par balayage
de la publication originale.

85 P

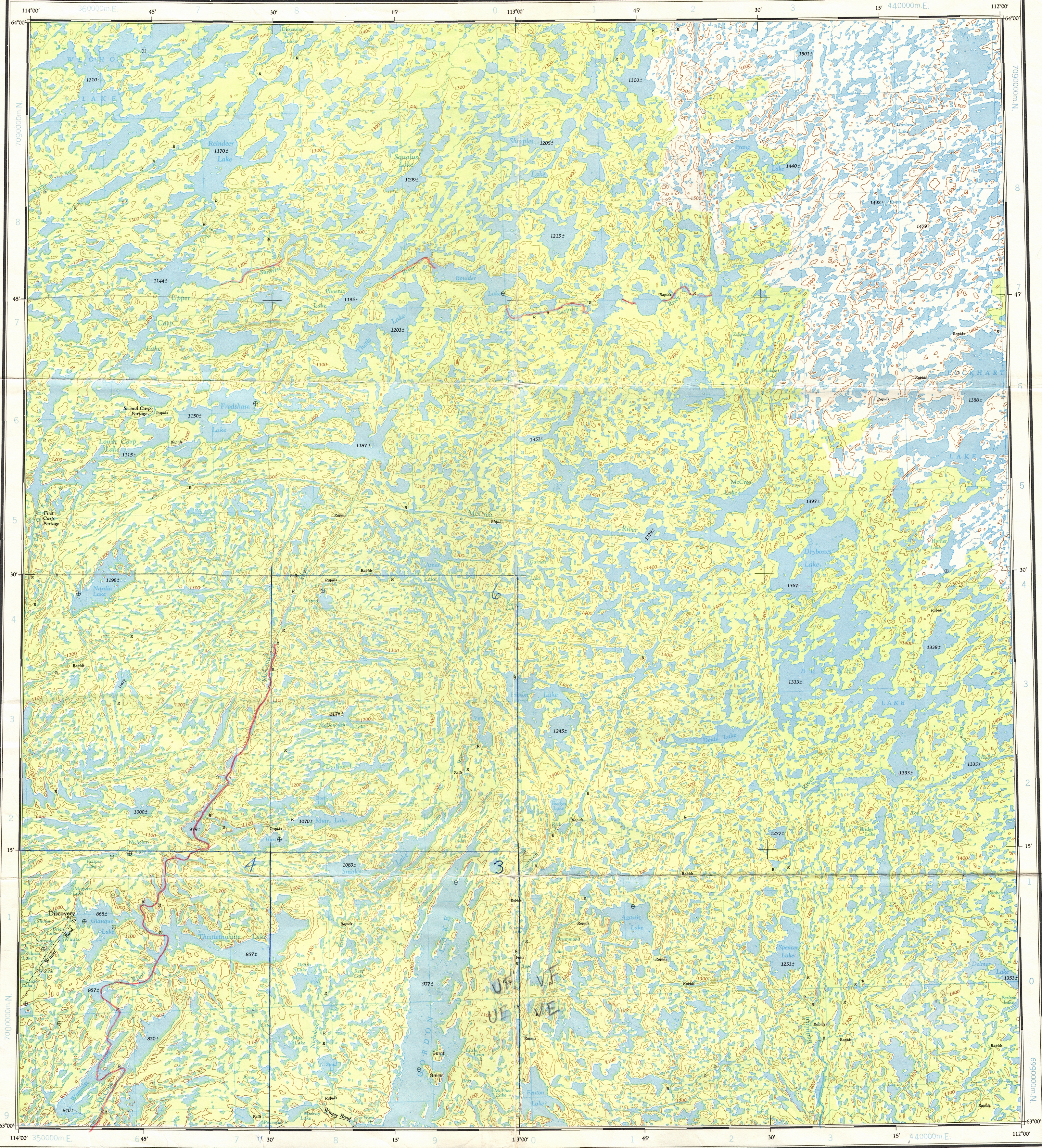
1:250,000

CANADA

EDITION 3

85 P

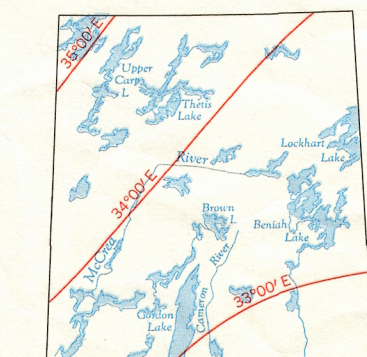
Refer to
this map as:
85P
EDITION 3 ASE
SERIES A 502



100,000 M. SQUARE IDENTIFICATION	
GRID ZONE DESIGNATION	71UG
12V	70
	4
TO GIVE A REFERENCE TO NEAREST 1000 METRES	
EXAMPLE:	MINE
SQUARE: Read letters of 100,000 m. square	UF
EASTING: Read number on grid line immediately to left of point	5
Estimate tenths of a square from this line eastward to point	4
NORTHING: Read number on grid line immediately below point	0
Estimate tenths of a square from this line northward to point	9
MILITARY GRID REFERENCE (to nearest 1,000 metres)	UF5409
If reporting beyond 18° in any direction, prefix Grid Zone Designation with 12VUF5409	

TEN THOUSAND METRE
UNIVERSAL TRANSVERSE MERCATOR GRID
ZONE 12

THE DECLINATION OF THE COMPASS NEEDLE 1963
DECLINAISON MAGNETIQUE EN 1963



The declination of the compass needle is decreasing 7.1 minutes annually.
La déclinaison magnétique décroît de 7.1 minutes annuellement.

Produced by the ARMY SURVEY ESTABLISHMENT, R.C.E.
Information depicted current as of 1954.
Copies may be obtained from the Map Distribution Office,
Department of Mines and Technical Surveys, Ottawa.

CARP LAKES

DISTRICT OF MACKENZIE

NORTHWEST TERRITORIES

Scale 1:250,000 Échelle

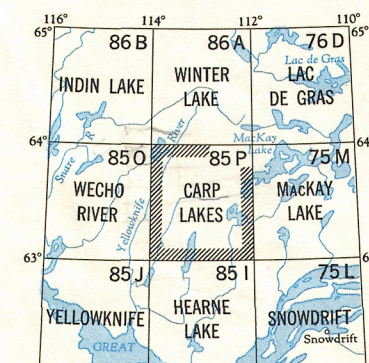


Transverse Mercator Projection
North American Datum 1927 (1952)
Contour Interval 100 feet
Elevations in feet above Mean Sea Level

Projection transverse de Mercator
Réseau géodésique nord-américain unifié 1927 (1952)
Équidistance des courbes: 100 pieds
Élévations en pieds au-dessus du niveau moyen de la mer

Publié par le SERVICE TOPOGRAPHIQUE DE L'ARMÉE,
(G.R.C.), Renseignements à jour en 1954.
Ces cartes sont en vente au Bureau de distribution des cartes,
ministère des Mines et des Relevés techniques, Ottawa.

Building	Bâtiment	Intermittent stream	Cours d'eau intermittent
Post office	Bureau de poste	Intermittent Lake	Lac intermittent
Church	Eglise	Rapids; falls	Rapides; chute
School	École	Marsh or Swamp	Marais ou marécage
Astronomical monument	Repère astronomique	String bog	Marais en chaquet
R.C.M.P. Detachment	Poste de la G.R.C.	Icefield or Glacier	Champ de glace ou glacier
Horizontal control point	Point géodésique	Tundra polygon	Sols polygonaux
Landing ground	Piste d'atterrissage	Tundra ponds	Étangs de toundra



Index to adjoining maps of the National Topographic System
Tableau d'assemblage du Système National de Référence Cartographique

CARP LAKES
85P
EDITION 3

85P