

Ce document est le produit d'une numérisation par balayage de la publication originale.  
This document was produced by scanning the original publication.

NATIONAL TOPOGRAPHIC SYSTEM

1:250,000

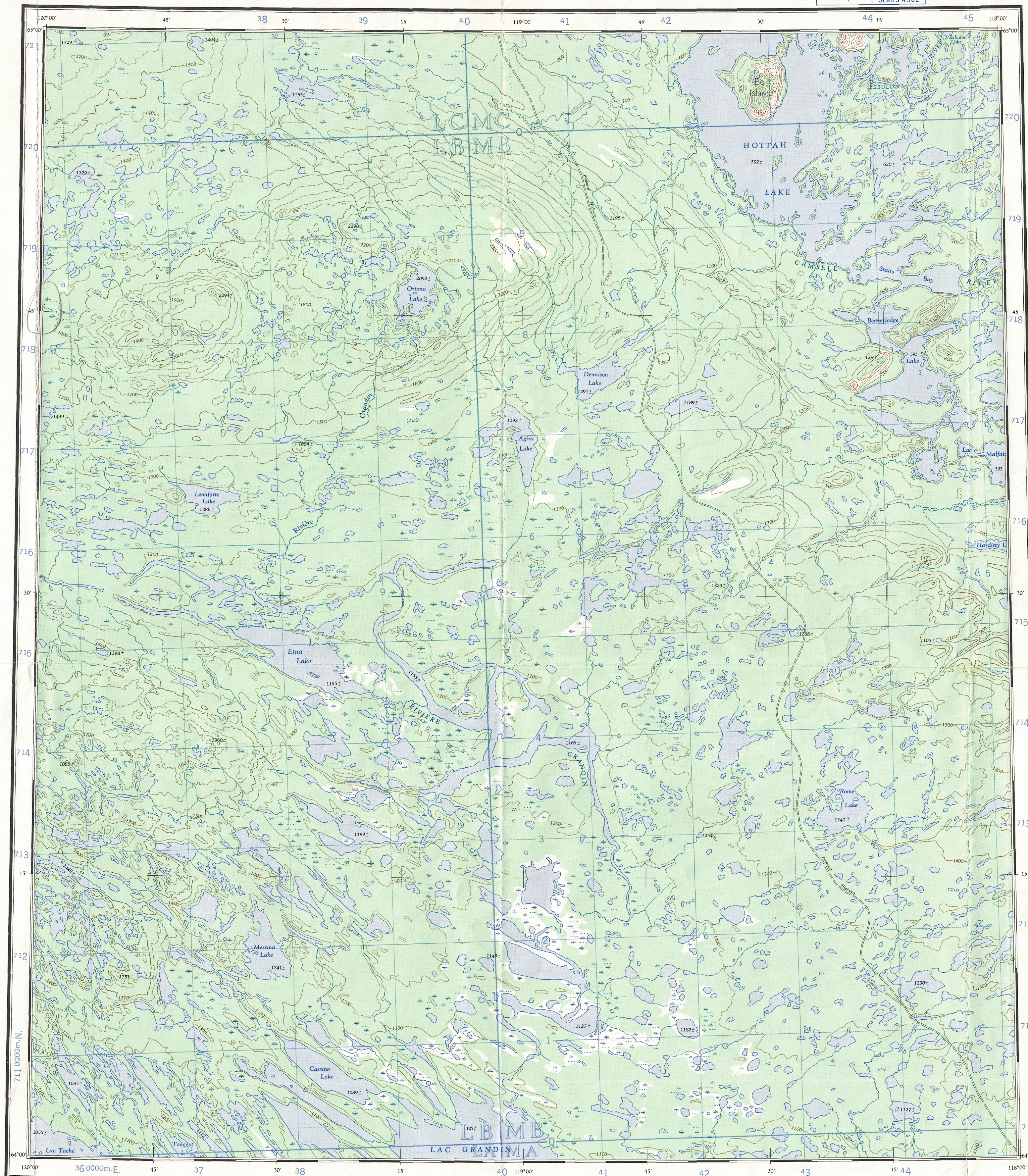
CANADA

SECOND EDITION

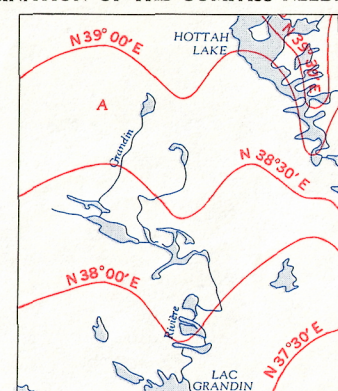
Refer to  
this Map as :

86 D  
EDITION 2 ASE  
SERIES A 502

SHEET 86 D



DECLINATION OF THE COMPASS NEEDLE, 1958



The declination of the compass needle at any place along a red line is the declination given on that red line. At other places the declination is between those given on the neighbouring red lines; this at the place marked A, the declination is between 1° 30' E and 1° 30' W. The yearly declination of the compass needle are decreasing 8.7 minutes annually.

Surveyed, compiled, drawn and printed by the  
ARMY SURVEY ESTABLISHMENT, R.C.E., 1953-59  
Aerial photography by the R.C.A.F., 1950

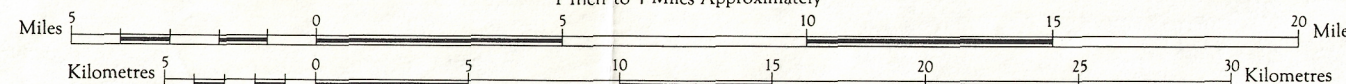
#### REFERENCE

Road, Hard Surface, All Weather	More than 2 Lanes Wide
" " " " " "	2 Lanes, Route No. Less than 2
" " " " " "	Less than 2 Lanes
" " " " " "	All Weather
" " " " " "	Dry Weather
Cart Track, Trail	Cart Track
Railway, Multiple Track	Single Track
Boundary, International	Province or State
" " " " " "	County or District
" " " " " "	Reserve, Indian, Military, etc.

## RIVIÈRE GRANDIN

DISTRICT OF MACKENZIE  
NORTHWEST TERRITORIES

Scale 1 : 250,000  
1 Inch to 4 Miles Approximately



Contour Interval 100 Feet  
Elevations in Feet above Mean Sea Level  
Transverse Mercator Projection  
North American Datum 1927  
Preliminary 1954

#### REFERENCE

Church, School	Horizontal Control Point
Settlement, Town	Spot Elevation, in feet
Contours, Elevation	Forest, undrained
" " " " " "	Swamp or Marsh
" " " " " "	Depression
" " " " " "	Approximate
Dry River Bed	Ferry
Stream, Intermittent	W.L. 125
" " " " " "	Mod Sand
" " " " " "	Falls
" " " " " "	Lighthouse
" " " " " "	Water
" " " " " "	Landing Ground
" " " " " "	Anchorage
" " " " " "	Power Transmission Line

Copies may be obtained from  
The Map Distribution Office,  
Dept. of Mines and Technical Surveys,  
Ottawa.

GRID ZONE DESIGNATION	100,000 M. SQUARE IDENTIFICATION
11 W	LCMC LBMB LA MA

TO GIVE A REFERENCE TO NEAREST 1000 METRES

EXAMPLE: ISLAND

SQUARE: Read letters of 100,000 m. square immediately to left of point. Estimate tenths of a square from this line eastward to point.

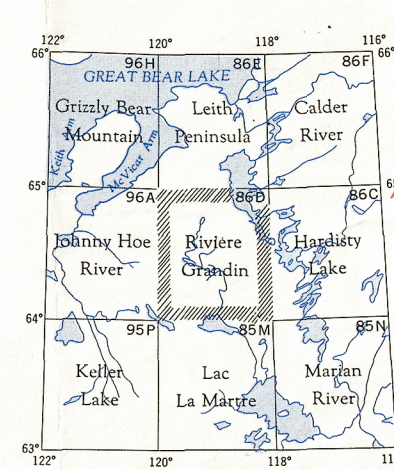
EASTING: Read number on grid line immediately below point. Estimate tenths of a square from this line eastward to point.

MILITARY GRID REFERENCE (to nearest 1,000 metres) MB0939

If reporting beyond 18° in any direction, prefix Grid Zone Designation as 11WMB0939

TEN THOUSAND METRE  
UNIVERSAL TRANSVERSE MERCATOR GRID  
ZONE 11

TOPOGRAPHICAL SURVEY DIRECTORATE  
SERVICE TOPOGRAPHIQUE  
DATE 10-12-85  
Q.C. APPROVES RELEASE  
C.Q. APPROUVE



EDITION 2 ASE

RIVIÈRE GRANDIN  
SHEET 86 D