

This document was produced scanning the original publication.

86 F

1:250,000

CANADA

EDITION 3

86 F

|                          |                                       |
|--------------------------|---------------------------------------|
| Refer to<br>this map as: | 86 F<br>EDITION 3 ASE<br>SERIES A 502 |
|--------------------------|---------------------------------------|



GRID ZONE  
DESIGNATION

11W

100,000 M. SQUARE IDENTIFICATION

MCND  
MCNC

73

50

TO GIVE A REFERENCE TO NEAREST 1000 METRES.

EXAMPLE: HORIZONTAL CONTROL POINT

SQUARE: Read letters of 100,000 m. square MCND

EASTING: Read number on grid line immediately below point

Estimate tenths of a square from this line eastward to point.

9  
60

NORTHING: Read number on grid line immediately below point

Estimate tenths of a square from this line northward to point.

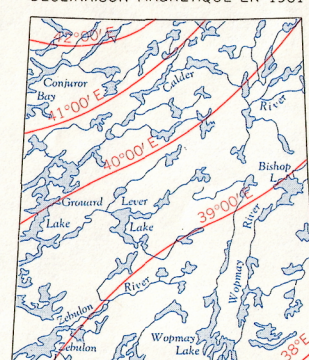
9  
33

MILITARY GRID REFERENCE  
(To nearest 1,000 metres) MC6963

If reporting beyond 10° in any direction,  
include the letter of the grid zone, e.g. MM6963

TEN THOUSAND METRE  
UNIVERSAL TRANSVERSE MERCATOR GRID  
ZONE 11

THE DECLINATION OF THE COMPASS NEEDLE 1961  
DÉCLINAISON MAGNÉTIQUE EN 1961



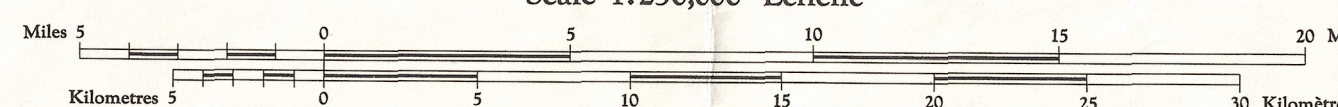
The declination of the compass needle is decreasing  
8 minutes annually.  
La déclinaison magnétique décroît de 8 minutes annuellement.







Produced by the ARMY SURVEY ESTABLISHMENT  
R.C.E. 1959-61. Aerial photography 1952.  
Copies may be obtained from the Map Distribution Office  
Department of Mines and Technical Surveys, Ottawa.

CALDER RIVER

DISTRICT OF MACKENZIE  
NORTHWEST TERRITORIES

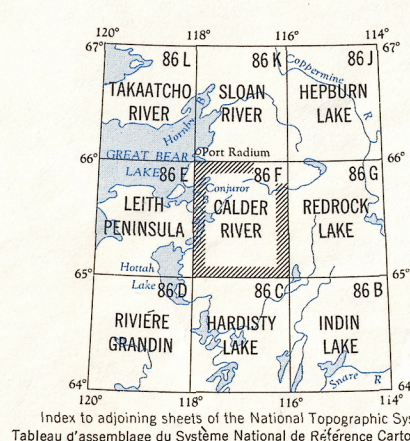
Scale 1:250,000 Échelle



|  |  |   |
|--|--|---|
| Roads:                                     | Routes:                                  |   |
| loose surface, all weather . . .           | de gravier toute saison . . .            |  less than 2 lanes<br>moins de 2 voies |
| cart track, trail . . .                    | chemin de terre, sentier . . .           |  dry weather<br>période sèche          |
|  |  |   |
| Spot elevation; precise, approximate . . . | Point coté; précis, approximatif . . .   |  950 . . . 950                         |
| Boundary monument . . .                    | borne frontière . . .                    |                                        |
| Pingo . . .                                | Buttes de terre . . .                    |                                        |
| Depression contours . . .                  | Courbes de cuvette . . .                 |                                        |
| Cliff or low relief . . .                  | Escarpement ou relief peu accentué . . . |                                        |
| Esker . . .                                | Esker . . .                              |                                        |

Préparée par le SERVICE TOPOGRAPHIQUE DE L'ARMÉE (G.R.C.) 1959-61. Photographie aérienne 1952.

|                          |                           |  |
|--------------------------|---------------------------|--|
| Builing                  | ..... Bâtiement           | Intermittent stream, Cours d'eau intermittent.   |
| Post office              | ..... Bureau de poste     | P Intermittent lake Lac intermittent             |
| Church                   | ..... Église              | R Rapids; falls Rapides; chutes                  |
| School                   | ..... École               | M Marsh or swamp Marais ou marécage              |
| Astronomical monument    | ..... Repère astronomique | S String bogs Marais en chaîne                   |
| R.C.M.P. Detachment      | ..... Poste de la G.R.C.  | I Icefield or Glacier, Champ de glace ou glacier |
| Horizontal control point | ..... Point géodésique    | T Tundra Polygons Sols polycaronaux              |
| Localities covered       | .....                     |  |



**CALDER RIVER**  
**86F**  
EDITION 2

TOPOGRAPHICAL SURVEY DIRECTORATE  
SERVICE TOPOGRAPHIQUE  
DATE 12-5-81  
Q.C. APPROVES RELEASE  
C.Q. APPROUVE

MAY 11 1984

1-98