

Ce document est le produit d'une
numérisation par balayage
de la publication originale.

86 G

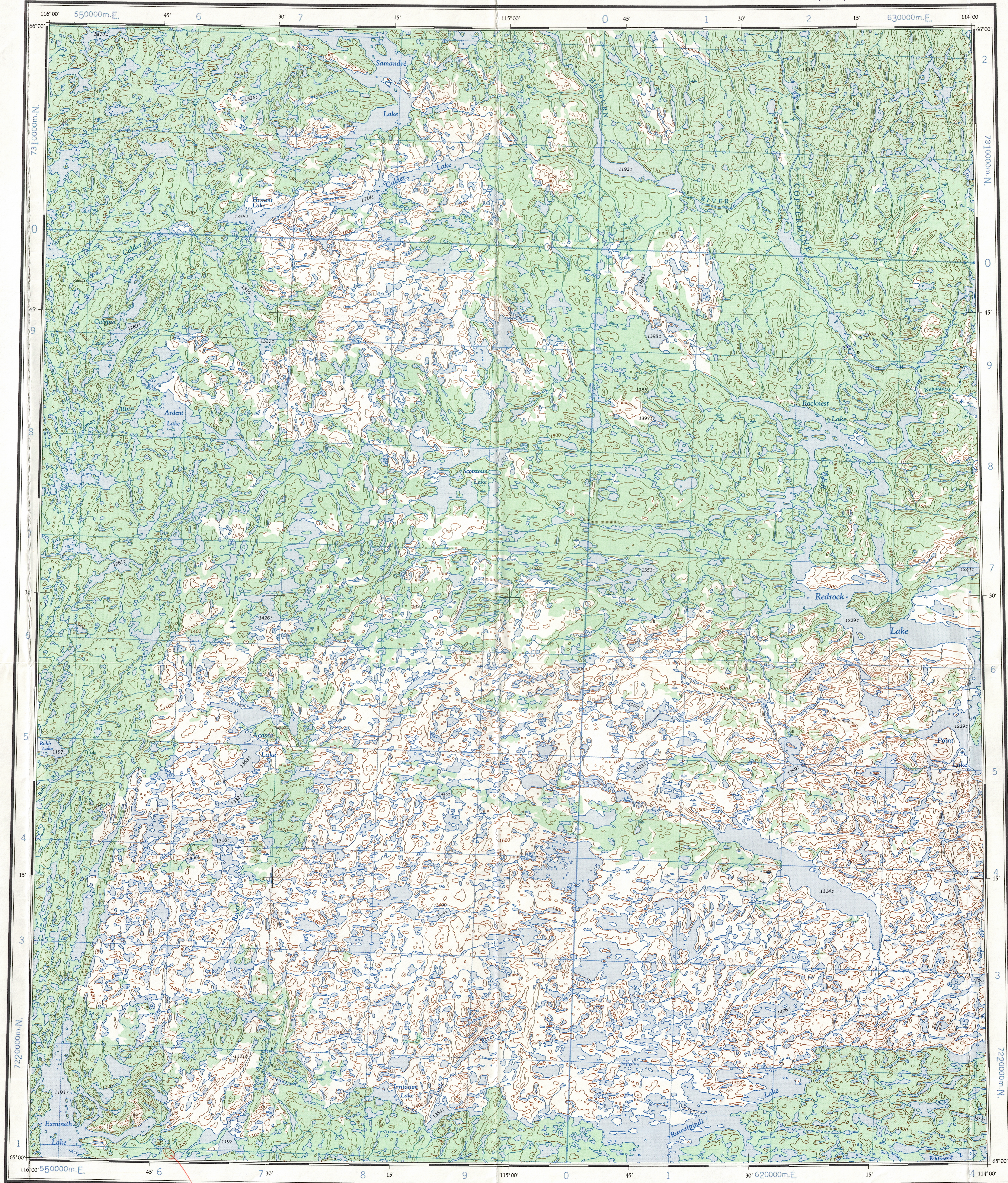
1:250,000

CANADA

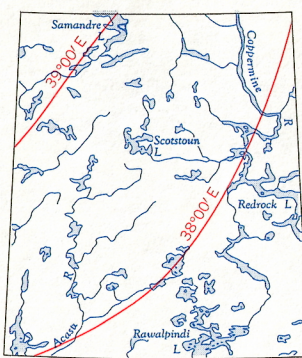
EDITION 2 (1977)

86 G

Refer to
this map as:
86 G
EDITION 2 ASE
SERIES A 502



THE DECLINATION OF THE COMPASS NEEDLE IN 1961
DÉCLINAISON MAGNÉTIQUE EN 1961



The declination of the compass needle is decreasing
61 minutes annually.
La déclinaison magnétique décroît de 61 minutes annuellement.

Compiled in 1959-60 by the ARMY SURVEY ESTABLISHMENT,
R.C.E. from air photographs taken in 1954. Printed 1962.
Copies may be obtained from the Map Distribution Office,
Department of Mines and Technical Surveys, Ottawa.

Interim corrections 1977.

Roads: loose surface, all weather, cart track, trail, Spot elevation, precise, approximate, Boundary monument, Pings, Depression contours, Cliff or low relief, Esker.

Roads: Routes: less than 2 lanes, more than 2 lanes, dry weather, paved, dry weather, paved, dry weather, paved. Scale 1:250,000 Échelle. Miles 5 0 10 15 20 25 30 Kilomètres 5 0 10 15 20 25 30 Kilomètres.

Transverse Mercator Projection
North American Datum 1927 (1954)
Contour Interval 100 feet
Elevations in feet above Mean Sea Level

Projection Transverse de Mercator
Réseau géodésique nord-américain 1927 (1954)
Équidistance des courbes: 100 pieds
Élévations en pieds au-dessus du niveau moyen de la mer

Compilée en 1959-60 par le SERVICE TOPOGRAPHIQUE
DE L'ARMÉE (G.R.C.) d'après les photographies aériennes
prises en 1954. Imprimée en 1962.
Ces cartes sont en vente au Bureau de distribution des cartes,
ministère des Mines et des Relevés techniques, Ottawa.

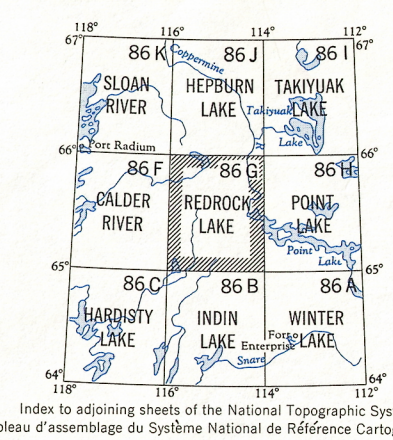
Corrections Provisoires, 1977.

Building, Post office, Church, School, Astronomical monument, R.C.M.P. Detachment, Horizontal control point, Landing ground, Intermittent stream, Intermittent lake, Rapids, falls, Marsh or swamp, String bogs, Icefield or Glacier, Tundra Polygons, Tundra Ponds.

GRID ZONE DESIGNATION	100,000 M. SQUARE IDENTIFICATION
11W	NOIPD NCPC 730 60
TO GIVE A REFERENCE TO NEAREST 1000 METRES	
EXAMPLE: RAPIDS	
SQUARE: Read letters of 100,000 m. square NC	
EASTING: Read number on grid line immediately to left of point. Estimate tenths of a square from this line eastward to point.	7 1 71
NORTHING: Read number on grid line immediately below point. Estimate tenths of a square from this line northward to point.	6 2 62
MILITARY GRID REFERENCE (to nearest 1,000 metres) NC7152	
If reporting beyond 18° in any direction, prefix Grid Zone Designation as: 11WNC7152	

TEN THOUSAND METRE
UNIVERSAL TRANSVERSE MERCATOR GRID
ZONE 11

TOPOGRAPHICAL SURVEY DIRECTORATE
SERVICE TOPOGRAPHIQUE
DATE: 10-12-85
O.C. APPROVES RELEASE
C.O. APPROUVE



REDROCK LAKE
86 G
EDITION 2 (1977)

REPRINT

86-G
D-98