

This document was produced
by scanning the original publication.
Ce document est le produit d'une
numérisation par balayage
de la publication originale.

89 D

1:250,000

CANADA

EDITION 1

89 D

Refer to
this map as:
89 D
EDITION 1 ASE
SERIES A 502



COMPILATION DIAGRAM - SOURCES UTILISÉES

A - Compiled photogrammetrically from 1960-62 aerial photography.
A - Établie par procédés photogrammétriques à partir de photographies aériennes, de 1960-62.

Produced by the ARMY SURVEY ESTABLISHMENT, R.C.E.
Information depicted current as of 1962. Printed 1965.
The daily change of the North Magnetic Pole renders the magnetic
compass useless in this area.
1964 Magnetic declination for this map varies from 82°40' easterly
at the centre of the west edge to 98°20' easterly at the centre of the
east edge.

Roads: loose surface, cart track, trail, Spot elevation, precise, approximate, Boundary monument, Pingo, Depression contours, Cliff or low relief, Esker.

Miles 5 0 5 10 15 20
Kilometres 5 0 5 10 15 20

BALLANTYNE STRAIT

DISTRICT OF FRANKLIN
NORTHWEST TERRITORIES

Scale 1:250,000 Échelle

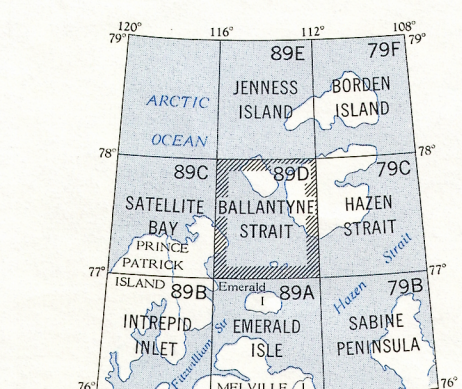
Transverse Mercator Projection
North American Datum 1927
Contour interval 100 feet
Elevations in feet above Mean Sea Level
Copies may be obtained from the Map Distribution Office,
Department of Mines and Technical Surveys, Ottawa.

Publiée par le SERVICE TOPOGRAPHIQUE DE L'ARMÉE,
(G.R.C.). Renseignements à jour en 1962. Imprimée en 1965.
La variation diurne du pôle Nord magnétique rend le
compas magnétique inutile dans cette région.
La déclinaison magnétique (1964) varie de 82°40' vers l'est au centre
de la bordure ouest de la feuille à 98°20' vers l'est au centre de la
bordure est.

Building, Post office, School, Church, Astronomical monument, R.C.M.P. Detachment, Horizontal control point, Lighthouse, Intermittent stream, Intermittent lake, Rapids, falls, Marsh or Swamp, String bogs, Tundra polygons, Tundra ponds.

GRID ZONE DESIGNATION
11X 12X
NS NR
VB VA
86
TO GIVE A REFERENCE TO NEAREST 1000 METRES
EXAMPLE: LAKE
SQUARE: Read letters of 100,000 m. square VB
EASTING: Read number on grid line
immediately to left of point
Estimate tenths of a square from
this line eastward to point.
NORTHING: Read number on grid line
immediately below point
Estimate tenths of a square from
this line northward to point.
MILITARY GRID REFERENCE
(to nearest 1000 metres)
VB5403
If reporting beyond 18° in any direction,
prefix Grid Zone Designation as: 12XVB5403

TEN THOUSAND METRE
UNIVERSAL TRANSVERSE MERCATOR GRID
ZONE 11-12



Index to adjoining maps of the National Topographic System
Tableau d'assemblage du Système National de Référence Cartographique
BALLANTYNE STRAIT
89 D
EDITION 1

TOPOGRAPHICAL SURVEY DISTRICT
SERVICE TOPOGRAPHIQUE
C.O. APPROVES
C.O. APPROVE

Print