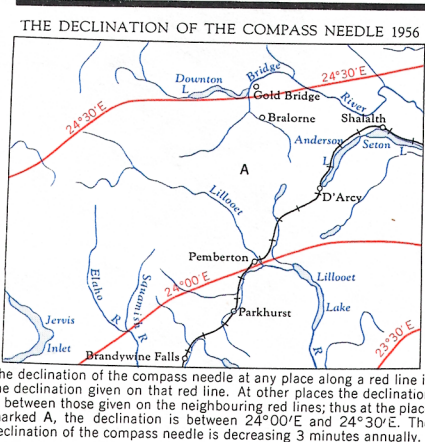
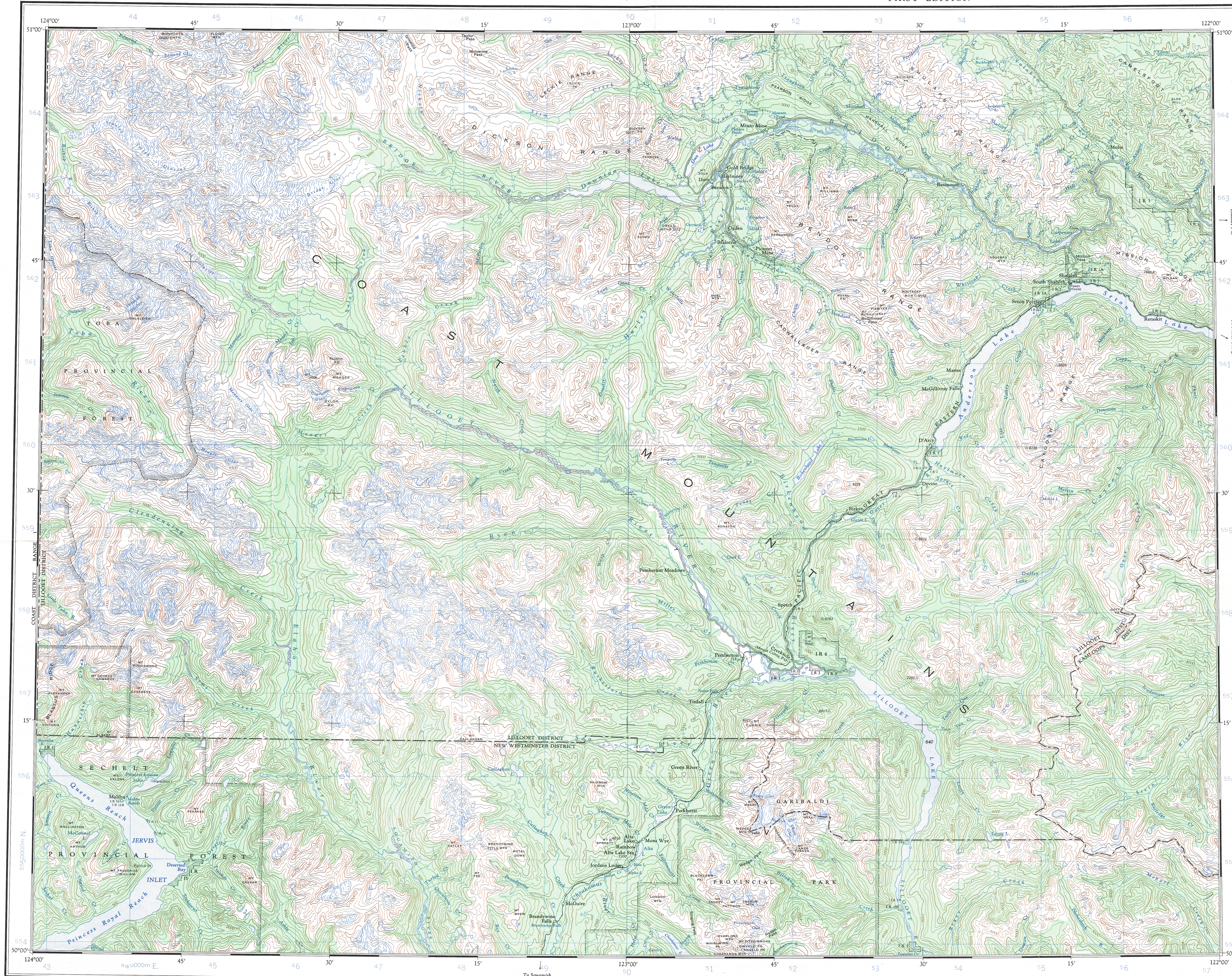


This document was produced
by scanning the original publication.
Ce document est le produit d'une
numérisation par balayage
de la publication originale.

Refer to this
Map as:
92 J
EDITION 1 ASE
SERIES A502

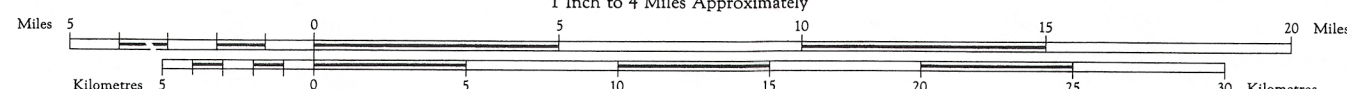


Produced and printed by the SURVEYS AND MAPPING
BRANCH, DEPARTMENT OF MINES AND TECHNICAL
SURVEYS, 1958, from air photographs taken in 1951.

Universal Transverse Mercator Projection

PEMBERTON BRITISH COLUMBIA

Scale 1:250,000
1 inch to 4 Miles Approximately

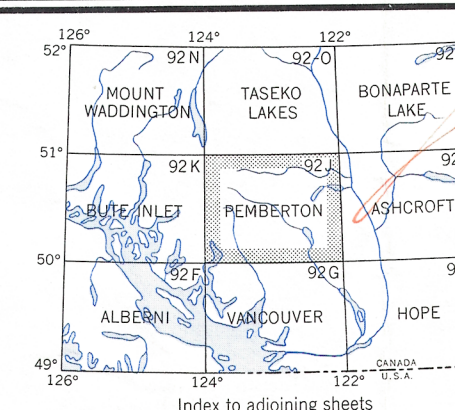


REFERENCE	
Roads:	
hard surface, all weather	—
loose surface, all weather	—
wagon cart track	—
Railway normal gauge	—
multiple track	—
single track	—
Boundary:	
international	—
provincial	—
county or district	—
Indian reserve, park, etc.	—
Surveyed line	—
Contour:	
elevation	—
depression	—
approximate	—
Spot elevation (in feet)	—
Power transmission line	—

Copies may be obtained from the Map Distribution
Office, Department of Mines and Technical Surveys,
Ottawa.

REFERENCE

City or large town	—
Town	—
Village or settlement	—
Stream:	
intermittent or dry	—
irrigation canal or ditch	—
Roads:	
landmark	—
Landmark	—
Post office	—
School	—
Church	—
Boundary monument	—
Astronomical position	—
Horizontal control point	—
Intermittent lake	—
Marsh or swamp	—
Sand, gravel or mud	—
Wooded areas	—
Seasonal base	—
Seaplane anchorage	—



TEN THOUSAND METRE
UNIVERSAL TRANSVERSE MERCATOR GRID
ZONE 10

TOPOGRAPHICAL SURVEY DIRECTORATE
SERVICES TOPOGRAPHIQUE

Q.C. APPROVES RELEASE
C.Q. APPROUVE

PEMBERTON
92 J

EDITION 1 ASE

REPRINT