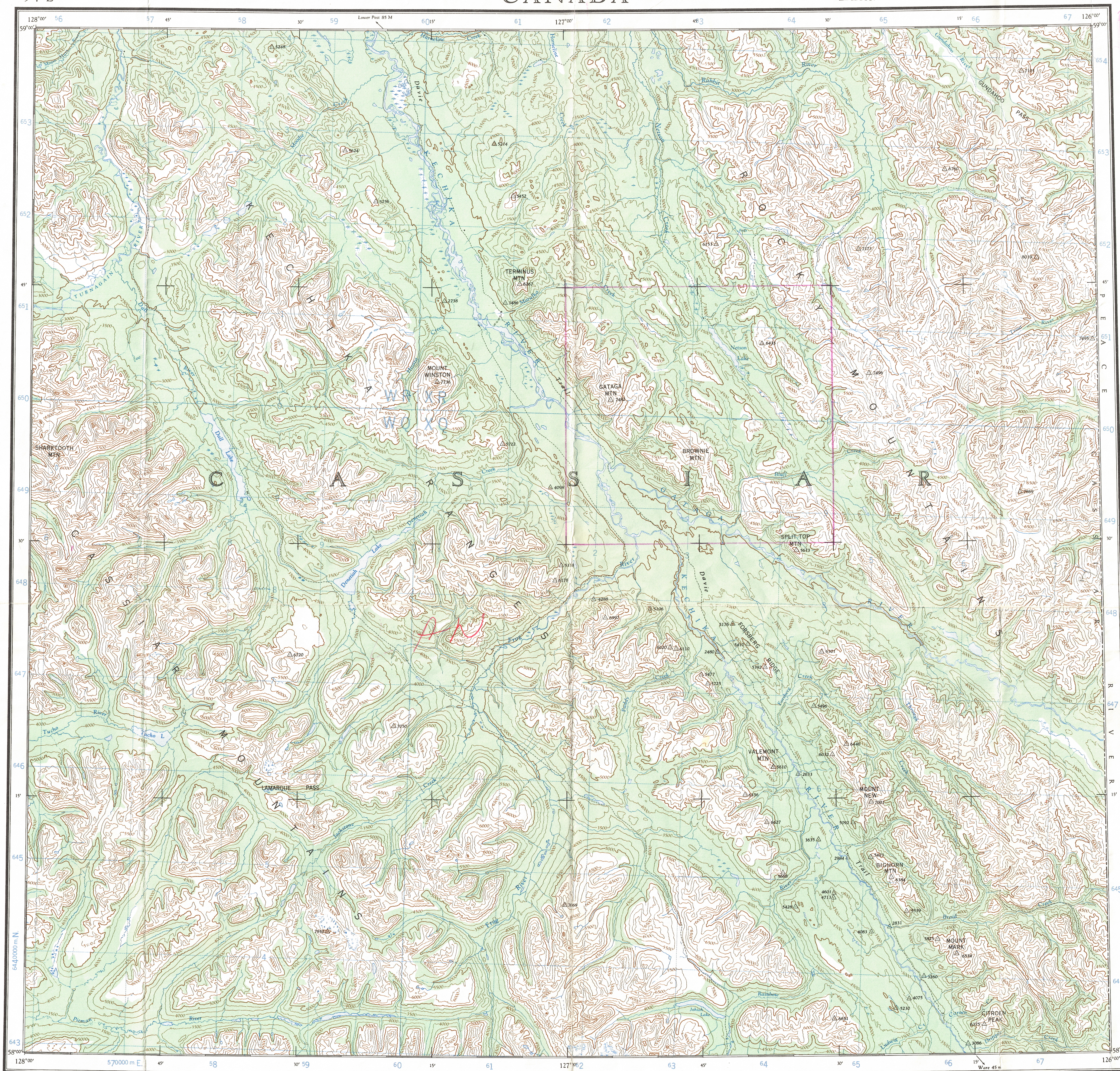


| | |
|---|-----------------------|
| Military users, refer to this map as: | SERIES A 502 SÉRIE |
| Référence de cette carte pour usage militaire: | MAP 94 L CART |
| | EDITION 2 MCE ÉDITION |



LAND DISTRICT

GRID POINT RESOLUTION
9 V

100,000 M. SQUARE INTERPOLATION

IGNORE THE SMALLER FIGURES of the grid number. These are for finding the grid coordinates. Use **ONLY THE LARGER FIGURES** of the grid number. Example: **570,000**

TO GIVE A STANDARD REFERENCE ON THIS SHEET TO NEAREST 100 METERS

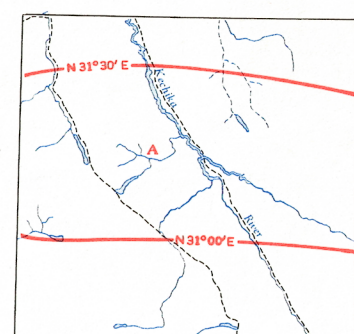
SAMPLE POINT TRIANGULATION STA

SAMPLE REFERENCE

If reporting bearing 18 m. and direction
9VWQ865
9VWQ9865

TEN THOUSAND METRE
UNIVERSAL TRANSVERSE MERCATOR GRID
ZONE 9

THE DECLINATION OF THE COMPASS NEEDLE. 1957



The declination of the compass needle at any place along a red line is the declination given on that red line. At other places the declination is between those given on the neighbouring red line; thus at the place marked A, the declination is between $N.31^{\circ}30'E.$ and $N.31^{\circ}00'E.$ The easterly declinations of the compass needle are decreasing 45 minutes annually.

Surveyed, compiled, drawn and printed by the ARMY SURVEY ESTABLISHMENT R.C.E., 1949-52.
Aerial photography by the R.C.A.F. 1949.

REFERENCE

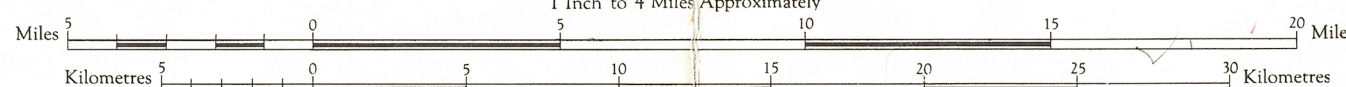
| | More than 2 Lanes | 2 Lanes |
|---|-------------------|---------|
| Road, Loose Surface, All Weather | ————— | ————— |
| " Loose Surface, Less than 2 Lanes | ————— | ————— |
| Cart Track | ————— | ————— |
| Trail | ————— | ————— |
| Railway, Multiple Track | ————— | ————— |
| " Single Track | ————— | ————— |
| Boundary, International | ————— | ————— |
| " Province or State | ————— | ————— |
| " County or District | ————— | ————— |
| " Reservations, Indian, Military, Park, etc. | ————— | ————— |

Copies may be obtained from the Canada Map Office,
Department of Energy, Mines and Resources, Ottawa,
or your nearest map dealer.

© Canada Copyrights Reserved 1977

K E C H I K A
BRITISH COLUMBIA

Scale 1 : 250,000
Inch to 4 Miles Approximately



Ces cartes sont en vente au Bureau des Cartes du Canada, ministère de l'Énergie, des Mines et des Ressources, Ottawa, ou chez le vendeur le plus près.

© Canada 1977, tous droits réservés

Contour interval 500 Feet.
All Elevations in Feet above Mean Sea Level.
Transverse Mercator Projection.

REFERENCE

Triangulation Station Δ Spot Elevation, in feet 257

Contour, Elevation FOX

Depression \times

Approximate $\times \times \times$

Church, School * S

Stream, Instream W.L. 241

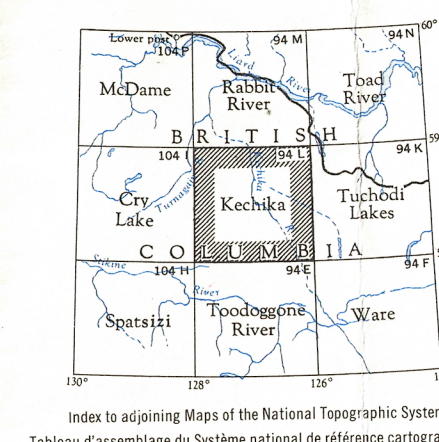
Dam Ferry

Falls Navigation Light

Aerodrome, on Land Elevation in Feet 250

Main Electric Power Line on Water

Mud Sand



TOPOGRAPHICAL SURVEY DIRECTORATE
SERIES TOPOGRAPHIQUE
John R. Horton DATE 01.04.82
Q.C. APPROVES RELEASE
C.Q. APPROUVE

KECHIKA B.C.
94 L
EDITION 2

(old reprostat material) Linework poor Reprint