

This document was produced  
by scanning the original publication.  
Ce document est le produit d'une  
numérisation par balayage  
de la publication originale.

95 L

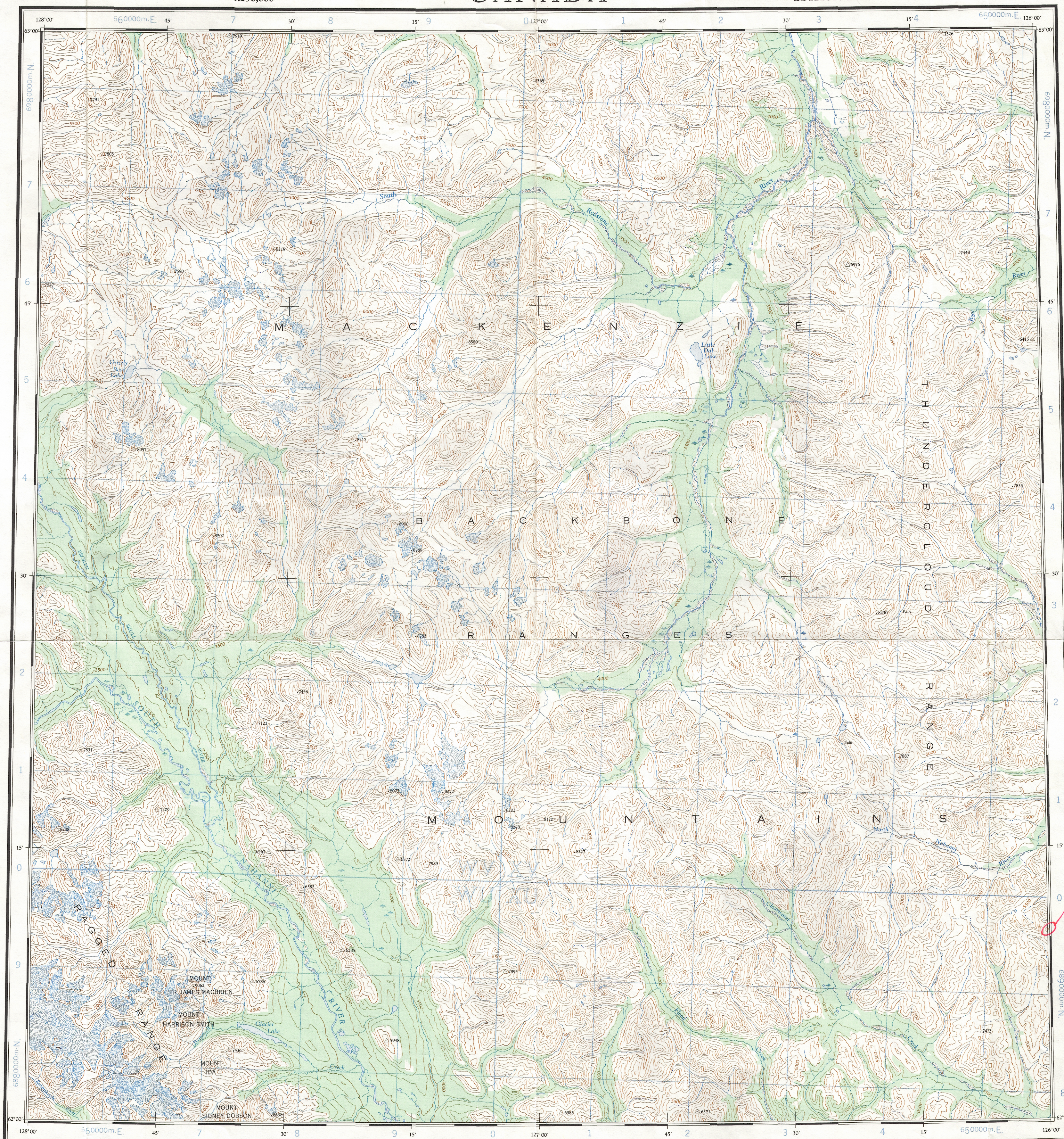
1:250,000

CANADA

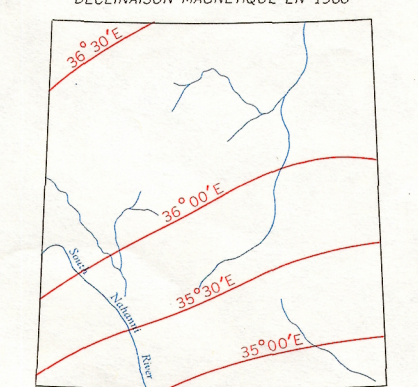
EDITION 1

95 L

Refer to  
this map as:  
95 L  
EDITION 1 ASE  
SERIES A 502



THE DECLINATION OF THE COMPASS NEEDLE 1960  
DECLINAISON MAGNETIQUE EN 1960

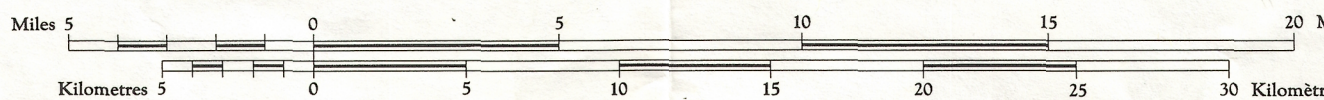


Produced by the ARMY SURVEY ESTABLISHMENT  
R.C.E. 1959-61. Aerial photography 1949  
Copies may be obtained from the Map Distribution Office,  
Department of Mines and Technical Surveys, Ottawa.

Roads: loose surface, all weather... de gravier toute saison...  
cart track, trail... chemin de terre, sentier...  
Spot elevation, precise, approximate... Point coté, précis, approximatif...  
Boundary monument... Borne frontalière...  
Pingo... Buttes de terre...  
Depression contours... Courbes de cuvette...  
Cliff or low relief... Escarpement ou relief peu accentué...  
Esker... Esker...

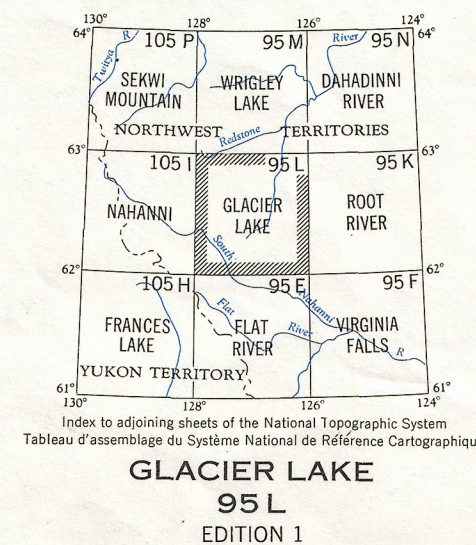
Transverse Mercator Projection  
North American Datum 1927  
Contour interval 500 feet  
Elevations in feet above Mean Sea Level

GLACIER LAKE  
DISTRICT OF MACKENZIE  
NORTHWEST TERRITORIES  
Scale 1:250,000 Échelle



Préparé par le SERVICE TOPOGRAPHIQUE DE L'ARMÉE,  
(G.R.C.) 1959-61. Photographie aérienne 1949  
Ces cartes sont en vente au Bureau de distribution des cartes,  
ministère des Mines et des Relevés techniques, Ottawa.

Building... Bâtiment...  
Post office... Bureau de poste...  
Church... Église...  
School... École...  
Astronomical monument... Repère astronomique...  
R.C.M.P. Detachment... Poste de la G.R.C...  
Horizontal control point... Pointe géodésique...  
Landing ground... Terrain d'atterrissage...  
Intermittent stream... Cours d'eau intermittent...  
Intermittent lake... Lac intermittent...  
Rapids; falls... Rapides; chutes...  
Marsh or swamp... Marais ou marécage...  
String bogs... Marais en chaquet...  
Icefield or Glacier, Champ de glace ou glacier...  
Tundra Polygons... Sols polygonaux...  
Tundra Ponds... Étangs de toundra...



GRID ZONE DESIGNATION	100,000 M. SQUARE IDENTIFICATION						
9V	<table><tr><td>WV</td><td>XV</td></tr><tr><td>WU</td><td>XU</td></tr><tr><td>60</td><td>60</td></tr></table>	WV	XV	WU	XU	60	60
WV	XV						
WU	XU						
60	60						
TO GIVE A REFERENCE TO NEAREST 1000 METRES							
EXAMPLE: LAKE							
SQUARE: Read letters of 100,000 m. square	WV						
EASTING: Read number on grid line immediately to left of point	9						
Estimate tenths of a square from this line eastward to point.	3						
NORTHING: Read number on grid line immediately below point	93						
Estimate tenths of a square from this line northward to point.	34						
MILITARY GRID REFERENCE (to nearest 1,000 metres)	WV9334						
If reporting, bearing 10° in any direction, prefix Grid Zone Designation as 9V WV9334							

TEN THOUSAND METRE  
UNIVERSAL TRANSVERSE MERCATOR GRID  
ZONE 9

TOPOGRAPHICAL SURVEY DIRECTORATE  
SERVICE TOPOGRAPHIQUE  
DATE 7-2-84  
Q.C. APPROVES RELEASE  
C.Q. APPROUVE

REPRINT