

Ce document est le produit d'une numérisation par balayage de la publication originale.
This document was produced by scanning the original publication.

95 M

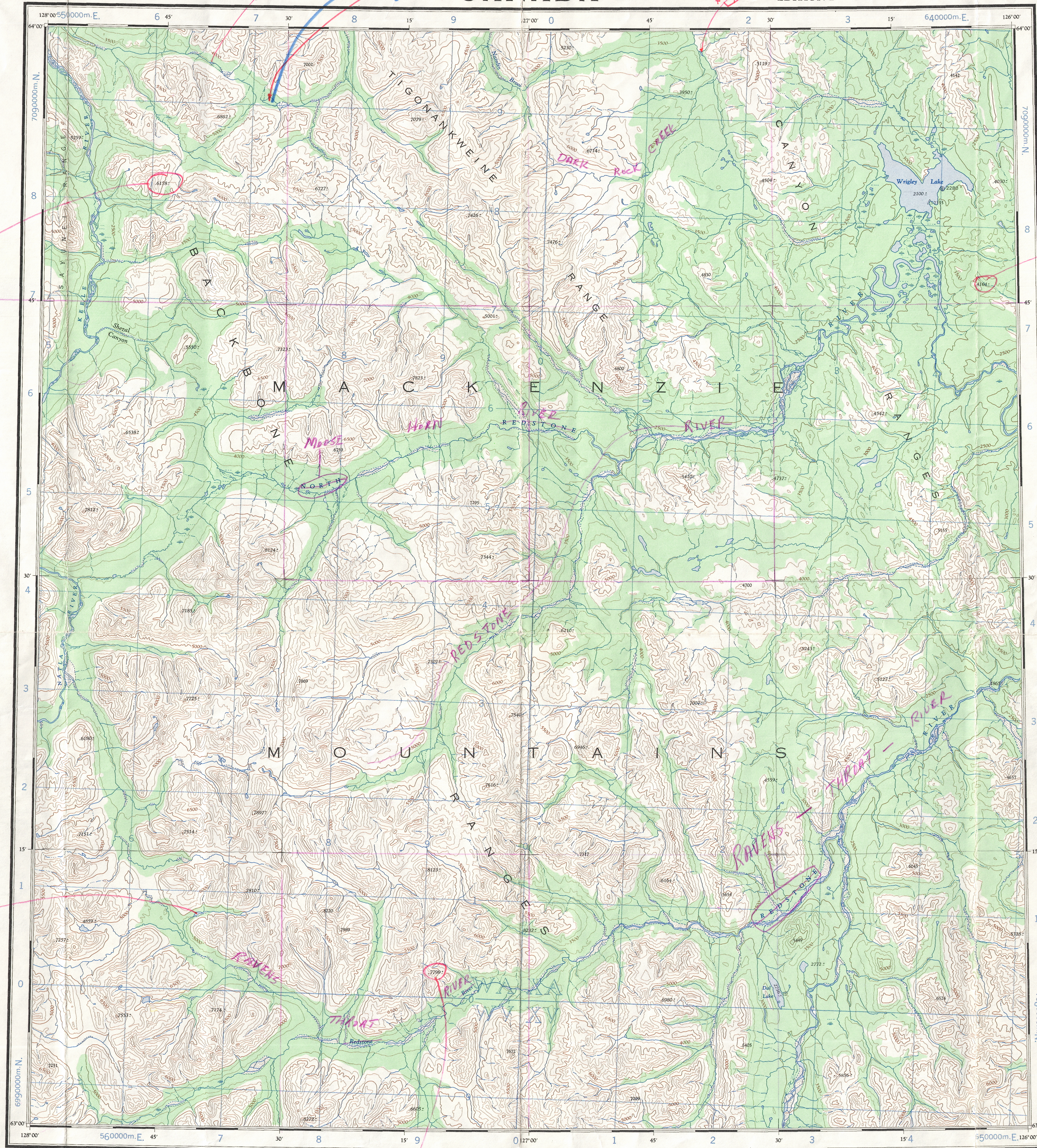
1:250,000

CANADA

EDITION 2

95 M

Refer to this map as:
95 M
EDITION 2 ASE
SERIES A 502



Delete LT. BLUE
X GREEN

GRID ZONE DESIGNATION	100,000 M. SQUARE IDENTIFICATION
9V	WB X B WA X A WX X V 600

TO GIVE A REFERENCE TO NEAREST 1000 METRES

EXAMPLE: STREAM JUNCTION

SQUARE: Read letters of 100,000 m. square X A

EASTING: Read number on grid line immediately to left of point. Estimate tenths of a square from this line westward to point.

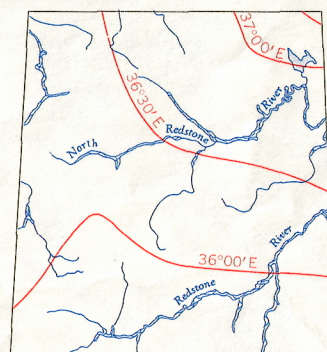
NORTHING: Read number on grid line immediately below point. Estimate tenths of a square from this line northward to point.

MILITARY GRID REFERENCE (to nearest 1,000 metres) XA0855

If reporting beyond 10° in any direction, prefix Grid Zone Designation as: SXXA0855

TEN THOUSAND METRE
UNIVERSAL TRANSVERSE MERCATOR GRID
ZONE 9

THE DECLINATION OF THE COMPASS NEEDLE 1961
DECLINAISON MAGNETIQUE EN 1961



The declination of the compass needle is decreasing
5.1 minutes annually.
La déclinaison magnétique décroît de 5.1 minutes annuellement

Produced by the ARMY SURVEY ESTABLISHMENT
R.C.E. 1959-61. Aerial photography 1949.
Copies may be obtained from the Map Distribution Office,
Department of Mines and Technical Surveys, Ottawa.

Roads: loose surface, all weather... de gravier, toute saison... for weather
cart track, trail... de terre, sentier... pour temps sec
Spot elevation, precise, approximate... Point coté, précis, approximatif... 900 - 900
Boundary monument... Bornes-frontière...
Pingo... Buttes de terre
Depression contours... Courbes de cuvette
Cliff or low relief... Falaise ou relief peu accentué
Esker... Esker

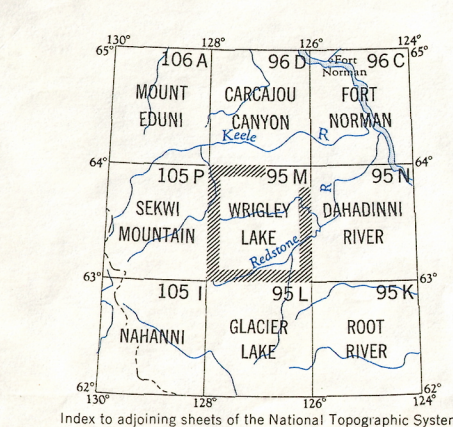
Miles 5 0 5 10 15 20
Kilometres 5 0 5 10 15 20 25 30

WRIGLEY LAKE
DISTRICT OF MACKENZIE
NORTHWEST TERRITORIES
Scale 1:250,000 Échelle

Transverse Mercator Projection
North American Datum 1927
Contour Interval 500 feet
Elevations in feet above Mean Sea Level

Préparé par le SERVICE TOPOGRAPHIQUE DE L'ARMÉE,
(G.R.C.) 1959-61. Photographie aérienne 1949.
Ces cartes sont en vente au Bureau de distribution des cartes,
ministère des Mines et des Relevés techniques, Ottawa.

Building... Bâtiment... Intermittent stream... Cours d'eau intermittent...
Post office... Bureau de poste... Intermittent lake... Lac intermittent...
Church... Église... Rapids... Rapières...
School... École... Marsh or swamp... Marais ou marécage...
Astronomical monument... Repère astronomique... String bogs... Marais en chapelet...
R.C.M.P. Detachment... Poste de la G.R.C... Icefield or Glacier... Champ de glace ou glacier...
Horizontal control point... Point géodésique... Tundra Polygons... Sol polygonaux...
Landing ground... Piste d'atterrissage... Tundra Ponds... Étangs de toundra...



WRIGLEY LAKE
95 M
EDITION 2

NAMES CHANGED/VERIFIED BY
To Polyomy 12-03-81 2pm
TOPOGRA. SURVEY DIRECTORATE
C.C. APPROVES RELEASE
C.C. APPROUVE

Print