

This document was produced  
by scanning the original publication.  
Ce document est le produit d'une  
numérisation par balayage  
de la publication originale.

NATIONAL TOPOGRAPHIC SYSTEM

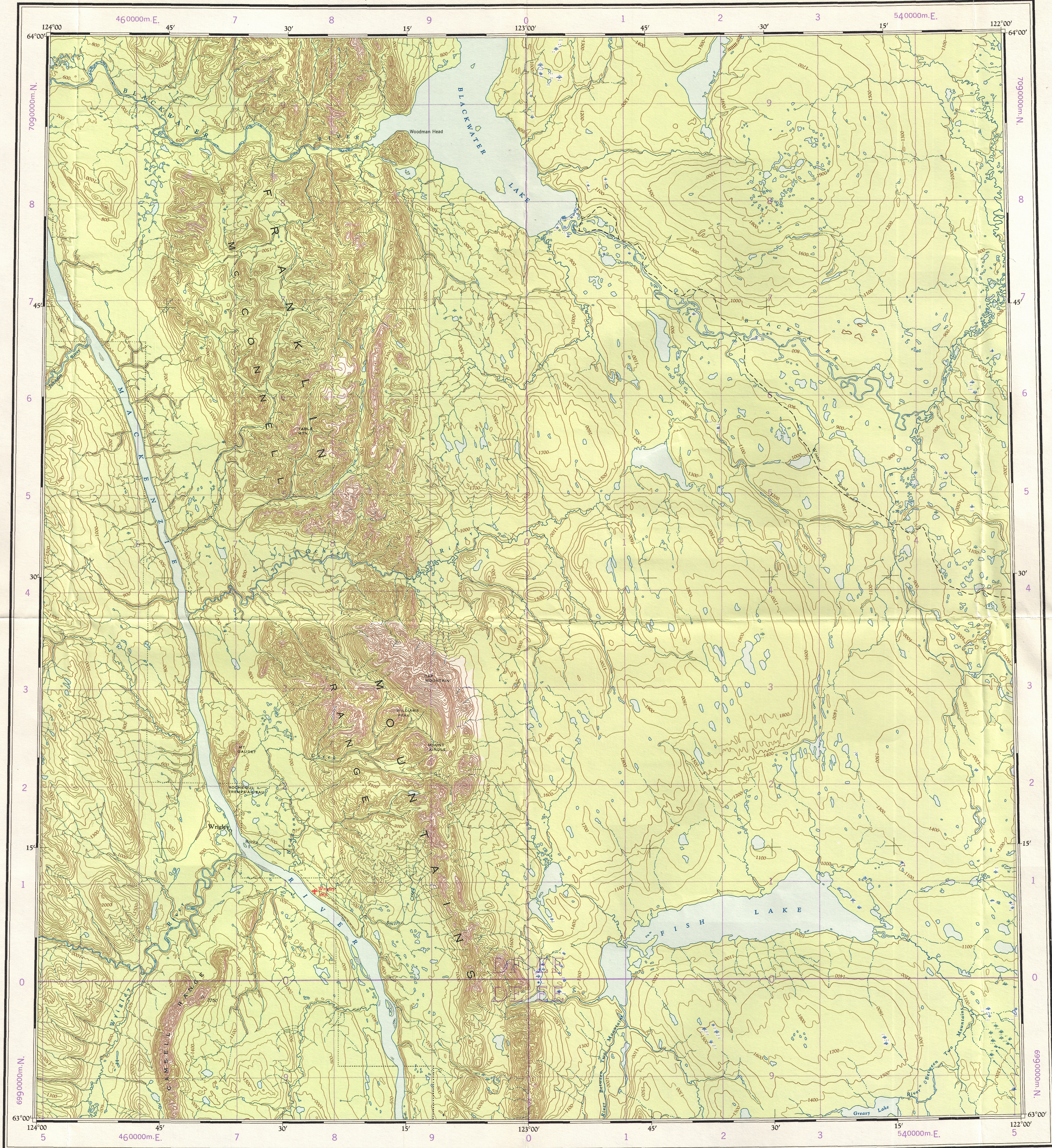
1:250,000

CANADA

SECOND EDITION

SHEET 95-O

Refer to  
this map as:  
95 O  
EDITION 2 ASE  
SERIES A 502



GRID ZONE IDENTIFICATION	
10V	DEEF DEEE 50
TO GIVE A REFERENCE TO NEAREST 1000 METRES	
EXAMPLE: STREAM JUNCTION	
SQUARE: Read letters on grid line immediately to left of point. Estimate tenths of a square from this line eastward to point.	
EASTING: Read number on grid line immediately below point. Estimate tenths of a square from this line northward to point.	
NORTHING: Read number on grid line immediately below point. Estimate tenths of a square from this line northward to point.	
MILITARY GRID REFERENCE (to nearest 1,000 metres): EF0046	
If reporting beyond 10° in any direction, prefix Grid Zone Designation as: 10VEF0046	

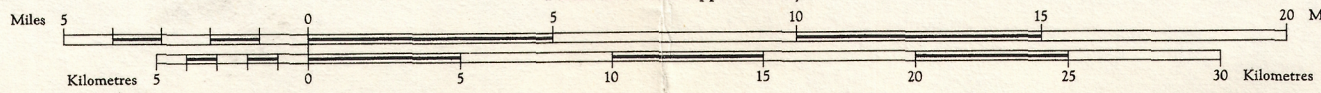
TEN THOUSAND METRE  
UNIVERSAL TRANSVERSE MERCATOR GRID  
ZONE 10

THE DECLINATION OF THE COMPASS NEEDLE 1957  
Along a red line is the declination given on that red line. At other places the declination is between those given on the neighbouring red lines; thus at the place marked A, the declination is between 27°30'E and 28°00'E. The declination of the compass needle is decreasing 7 minutes annually.

Produced and printed by the SURVEYS AND MAPPING BRANCH,  
DEPARTMENT OF MINES AND TECHNICAL SURVEYS, 1959,  
from air photographs taken in 1950 and 1951.

REFERENCE

- Wagon or winter road
- Cut line
- Village or settlement
- Post office
- Building or cabin
- Sand, gravel or mud
- Horizontal control point
- Astronomical position
- Airfield

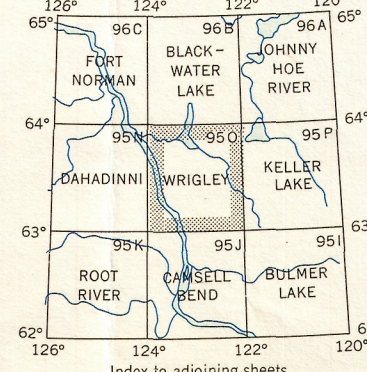


WRIGLEY  
NORTHWEST TERRITORIES  
DISTRICT OF MACKENZIE

Scale 1:250,000  
1 inch to 4 Miles Approximately

REFERENCE

- Streams: intermittent or dry
- Rapids; falls
- Marsh or swamp
- Esker
- Contours: elevation, depression, approximate
- Wooded areas



WRIGLEY  
95-O  
EDITION 2