

This document was produced
by scanning the original publication.

Ce document est le produit d'une
numérisation par balayage
de la publication originale.

96 M

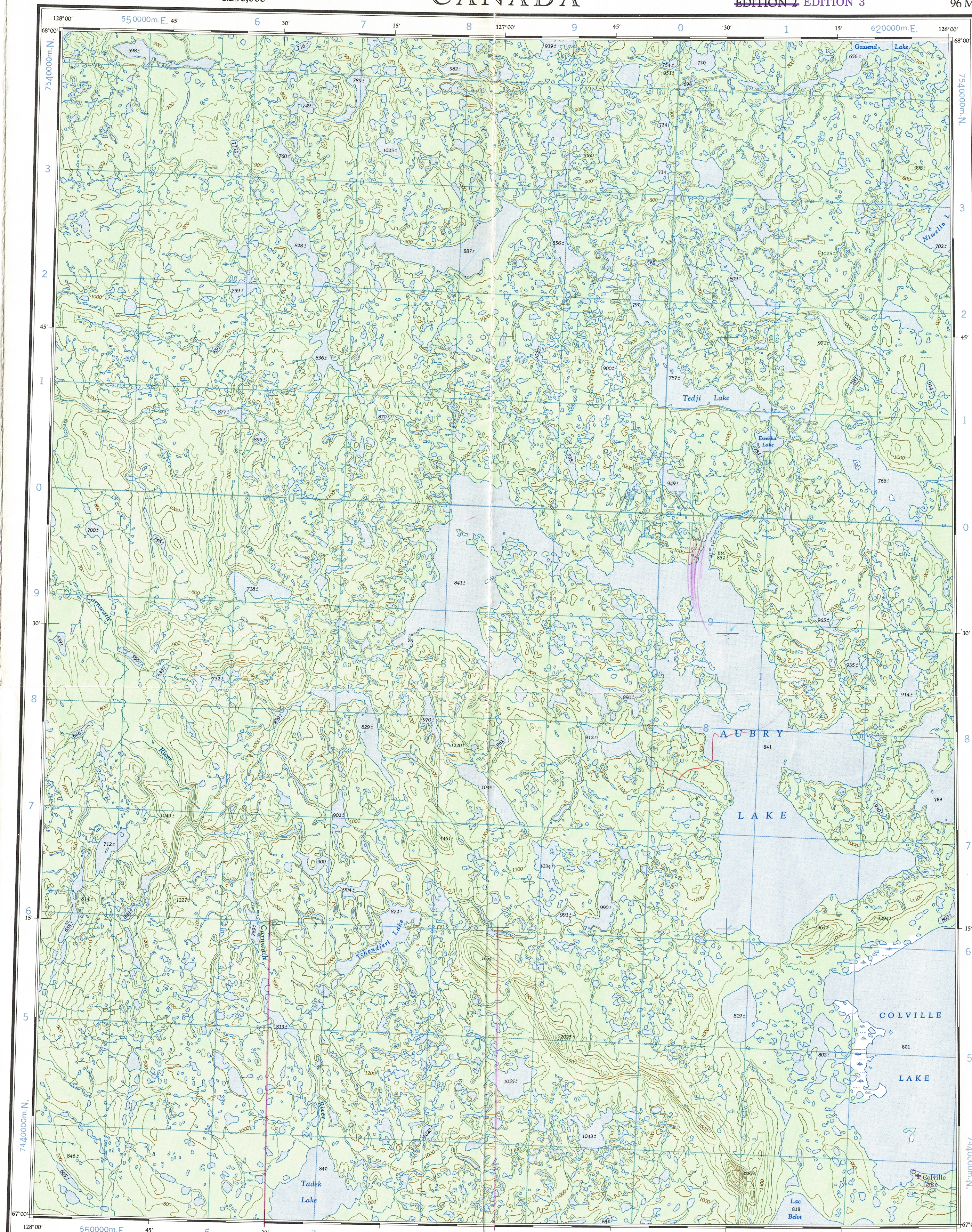
1:250,000

CANADA

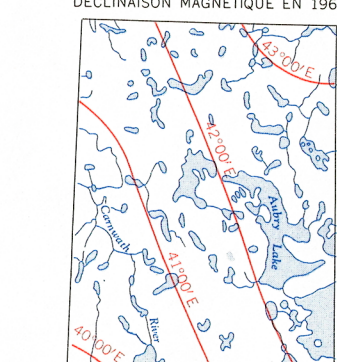
EDITION 3

96 M

Refer to
this map as:
96M
SERIES A 502
EDITION 3 MCE



THE DECLINATION OF THE COMPASS NEEDLE IS DECREASING
DECLINAISON MAGNETIQUE EN 1961



The declination of the compass needle is decreasing
7.6 minutes annually.
La déclinaison magnétique décroît de 7.6 minutes annuellement.

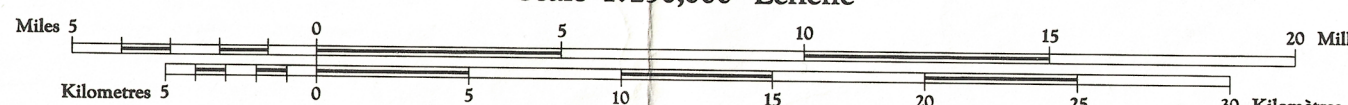
Roads: loose surface, all weather... de gravier/toute saison...
cart track, trail... chemin de terre, sentier...
Spot elevation, precise, approximate... Point coté précis, approximatif...
Boundary monument... Borne-frontière...
Pingo... Buttes de terre...
Depression contours... Courbes de creux...
Cliff or low relief... Falaise ou relief peu accentué...
Esker... Esker...

Produced by the ARMY SURVEY ESTABLISHMENT
R.C.E. 1957-61. Aerial photography 1950.

Copies may be obtained from the Map Distribution Office,
Department of Mines and Technical Surveys, Ottawa.

Interim corrections 1976

AUBRY LAKE
DISTRICT OF MACKENZIE
NORTHWEST TERRITORIES
Scale 1:250,000 Échelle



Transverse Mercator Projection
North American Datum 1927 (1954)
Contour Interval 100 feet
Elevations in feet above Mean Sea Level

Projection Transverse de Mercator
Réseau géodésique nord-américain unifié 1927 (1954)
Équidistance des courbes: 100 pieds
Élévations en pieds au-dessus du niveau moyen de la mer

Préparée par le SERVICE TOPOGRAPHIQUE DE L'ARMÉE,
G.R.C. 1957-61. Photographie aérienne 1950.

Ces cartes sont en vente au Bureau de distribution des cartes,
ministère des Mines et des Relevés techniques, Ottawa.

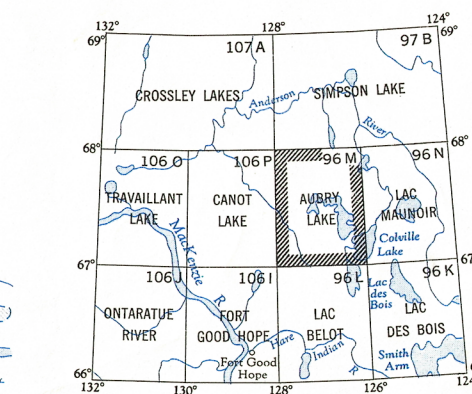
Corrections provisoires 1976

Building... Bâtiment...
Post office... Bureau de poste...
Church... Église...
School... École...
Astronomical monument... Repère astronomique...
R.C.M.P. Detachment... Poste de la G.R.C...
Horizontal control point... Point géodésique...
Landing ground... Piste d'atterrissage...
Intermittent stream... Cours d'eau intermittent...
Intermittent lake... Lac intermittent...
Rapid; falls... Rapides; chute...
Marsh or swamp... Marais ou marécage...
String bogs... Marais en chapelet...
Icefield or Glacier... Champ de glace ou glacier...
Tundra Polygons... Sols polygonaux...
Tundra Ponds... Étangs de toundra...

GRID ZONE
DESIGNATION
9 W
100,000 M. SQUARE IDENTIFICATION
W F X F
W E X E
750
60
TO GIVE A REFERENCE TO NEAREST 1000 METRES
EXAMPLE: ISLAND
SQUARE: Read letters of 100,000 m. square WE
EASTING: Read number on grid line immediately to left of point.
Estimate tenths of a square from this line eastward to point.
NORTHING: Read number on grid line immediately below point.
Estimate tenths of a square from this line northward to point.
MILITARY GRID REFERENCE
(to nearest 1,000 metres) WE8598
If reporting beyond 18° in any direction, prefix Grid Zone Designation as: 9W WE8598

TEN THOUSAND METRE
UNIVERSAL TRANSVERSE MERCATOR GRID
ZONE 9

TOPOGRAPHICAL SURVEY DIRECTORATE
SERVICE TOPOGRAPHIQUE
DATE 4 Aug 78
C.Q. APPROVES RELEASE
C.Q. APPROUVE



AUBRY LAKE
96 M
EDITION 3

EDITION 3 TO Ramsey
FOR REMOTE areas AMPLIFIED in index box
Southwest corner
25-04-80

N-96

Reprints