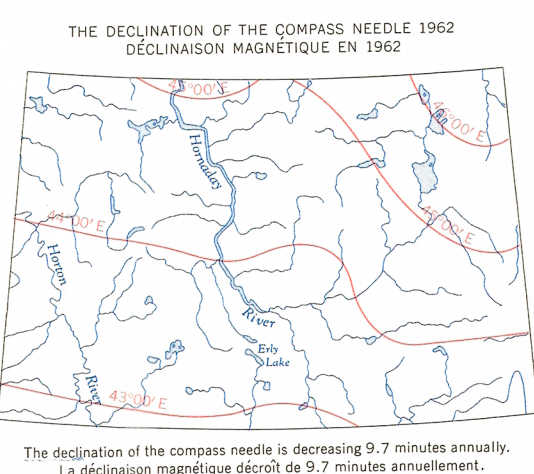
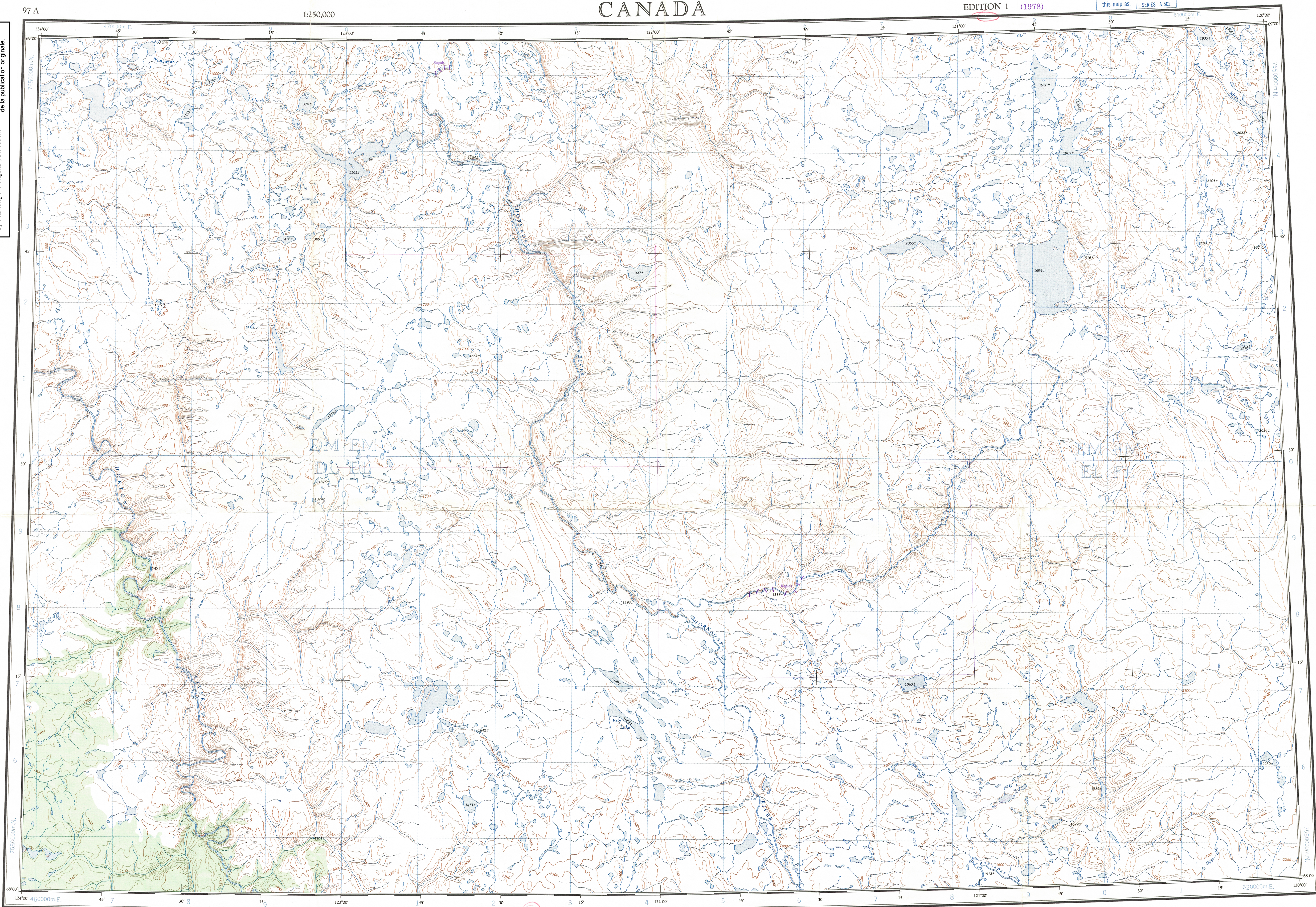


This document was produced by scanning the original publication.

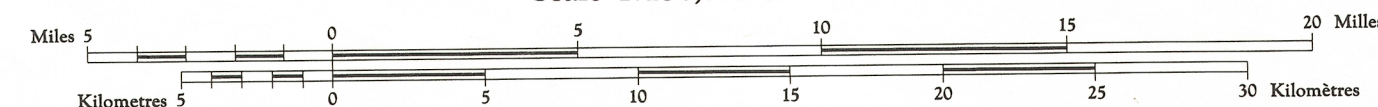
Ce document est le produit d'une numérisation par balayage de la publication originale.



Produced by the ARMY SURVEY ESTABLISHMENT, R.C.E.
Information depicted current as of 1961.
Copies may be obtained from the Map Distribution Office,
Department of Mines and Technical Surveys, Ottawa.

Interim corrections 1978.

- | | | | |
|--------------------------------------|----------------------------------|--------------------|-------------|
| Roads: | Routes: | less than 2' lanes | dry weather |
| loose surface, all weather | de gravelier, toute saison | | |
| cart track trail | de terre, sentier | | |
| Spot elevation; precise, approximate | Point coté; précis, approximatif | 950 - 950 | |
| Boundary monument | Borne-frontière | | |
| Pingo | Bulles de terre | | |
| Depression contours | Courbes de cuvette | | |
| Cliff or low relief | Falaise ou relief peu accentué | | |
| Esker | | | |



Transverse Mercator Projection
North American Datum 1927
Contour Interval 100 feet
Elevations in feet above Mean Sea Level

Projection transverse de Mercator
Réseau géodésique nord-américain unifié 1927
Équidistance des courbes: 100 pieds
Élévations en pieds au-dessus du niveau moyen de la mer

ERLY LAKE

DISTRICT OF MACKENZIE
NORTHWEST TERRITORIES
Scale 1:250,000 Échelle

TOPOGRAPHICAL SURVEY DISTRICT
SERVICE TOPOGRAPHIQUE

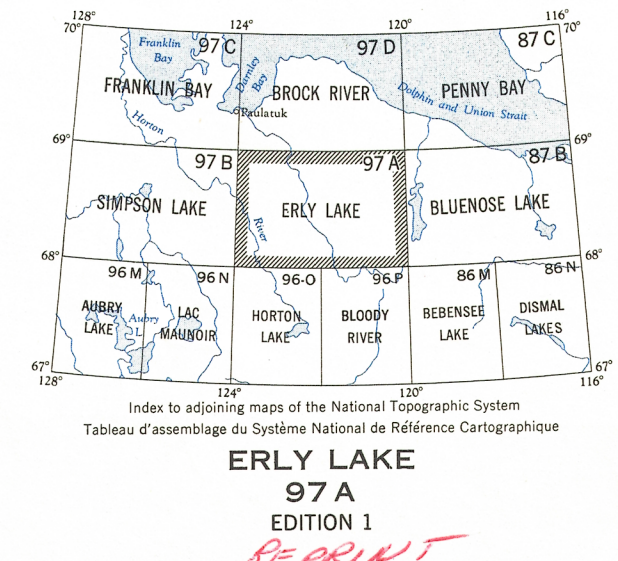
Publié par le SERVICE TOPOGRAPHIQUE DE L'ARMÉE,
Informations représentées à jour en 1961.
Les cartes sont en vente au Bureau de distribution des cartes,
Bureau des Mines et des Relevés techniques, Ottawa.

DATE 26-2-78 Corrections provisoires, 1978.

Q.C. APPROVES RELEASE
C.Q. APPROUVE

- | | | | |
|--------------------------|----------------------|---------------------|---------------------------|
| Building | Bâtiment | Intermittent stream | Cours d'eau intermittent |
| Post office | Bureau de poste | Intermittent Lake | Lac intermittent |
| Church | Église | Rapids; falls | Rapides; chute |
| School | École | Marsh or Swamp | Marais ou marécage |
| Astronomical monument | Repère astronomique | String bogs | Marais en chapelet |
| R.C.M.P. Detachment | Poste de la G.R.C. | Icefield or Glacier | Champ de glace ou glacier |
| Horizontal control point | Pointe géodésique | Tundra polygons | Sols polygonaux |
| Landing ground | Plate d'atterrissage | Tundra ponds | Étangs de toundra |

GRID ZONE IDENTIFICATION	
GRID ZONE IDENTIFICATION	10W
EXAMPLE: SILVER JUNCTION	
SQUARE: Read letters of 100,000 m. square E.L.	
EASTING: Read number on grid line immediately to left of point	
NORTHING: Read number on grid line immediately above point	
EXAMPLE: Read letters of 100,000 m. square E.L.	EL 4280
MILITARY GRID REFERENCE (in square 100,000 m. square)	10WEL4280



97-A