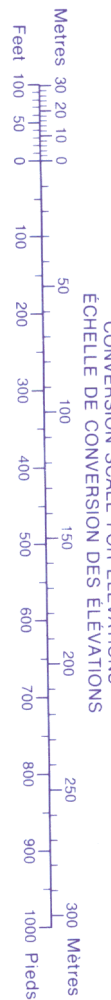
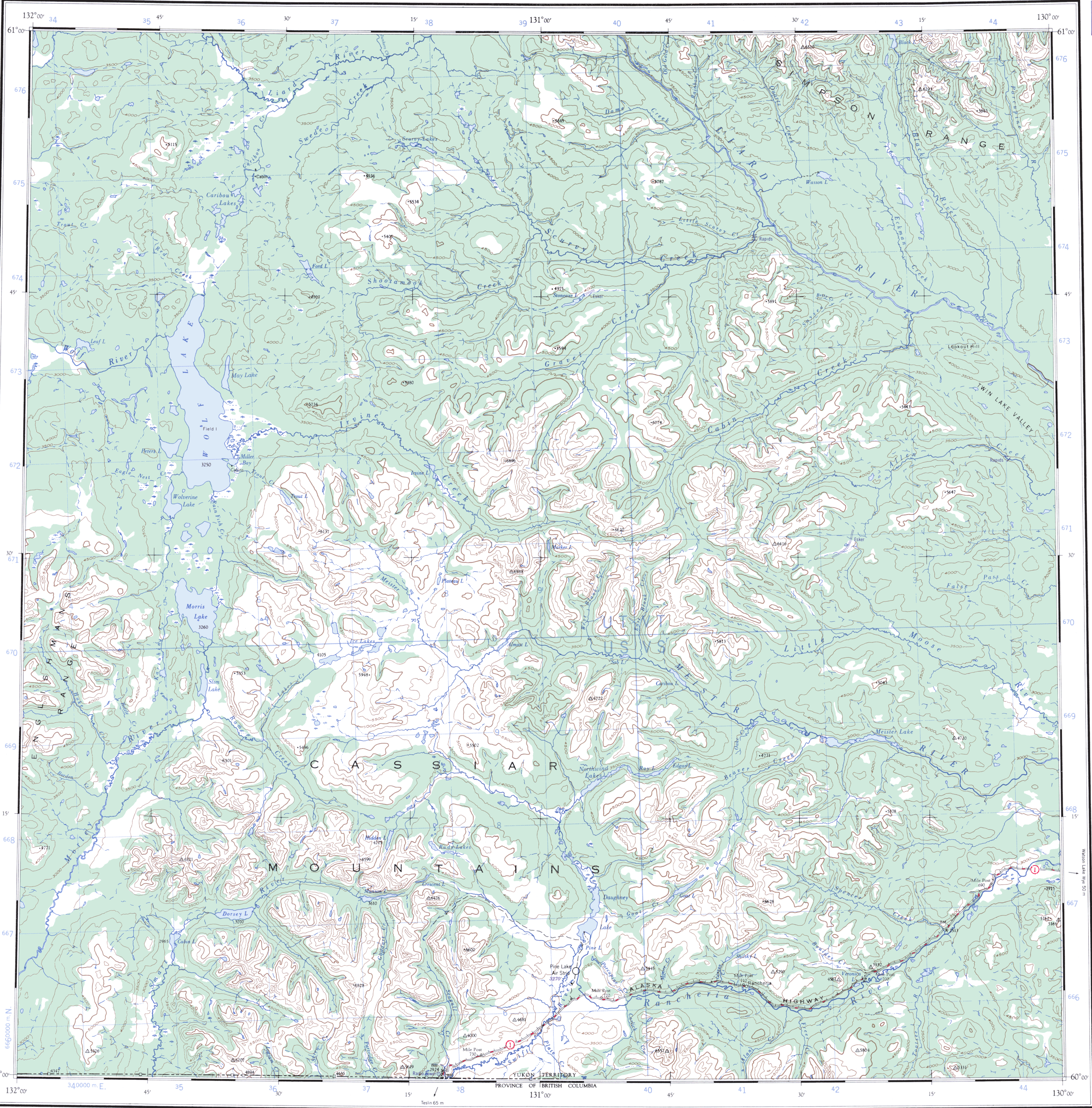


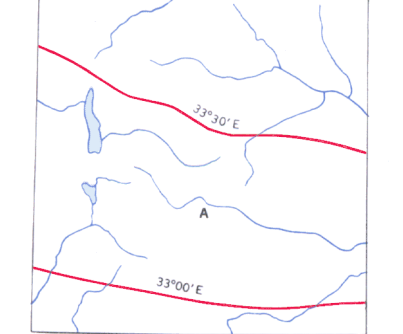
Military users, refer to this map as: Référence de cette carte pour usage militaire:	SERIES MAP EDITION	A 502 105 B 3 MCE	SÉRIE CARTE EDITION
-----------------------------------------------------------------------------------------------	--------------------------	-------------------------	---------------------------



TEN THOUSAND METRE
UNIVERSAL TRANSVERSE MERCATOR GRID
ZONE 9

GRID ZONE DESIGNATION	TO GIVE A STANDARD REFERENCE ON THIS SHEET TO NEAREST 1000 METRES
100,000 M ² SQUARE IDENTIFICATION	SAMPLE POINT TRIANGULATION STA.
UT VT US VS 40	VT 1 5 0 9
IGNORE THE SMALLER figures of any grid number. These are for finding the full coordinates. Use ONLY the LARGER figures of the grid number. example: 410000	SAMPLE REFERENCE: If reporting beyond 18" in any direction, prefix Grid Zone Designation as: VT1509 9VVT1509

THE DECLINATION OF THE COMPASS NEEDLE 1951

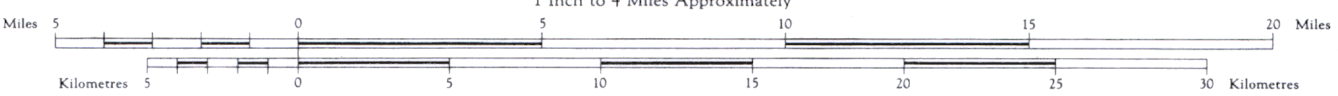


REFERENCE	More than 2 Lanes	2 Lanes	Route No.	Less than 2 Lanes
Road, Hard Surface, All Weather	—	—	—	—
Road, Loose Surface, All Weather	—	—	—	—
Road, Wagon, etc.	—	—	—	—
Trail or Portage	—	—	—	—
Boundary, International	—	—	—	—
Boundary, Provincial	—	—	—	—
Boundary, County or District	—	—	—	—
Boundary, Indian Reserves, Park	—	—	—	—
Surveyed Line	—	—	—	—
Main Electric Power Line	—	—	—	—
Railway, Standard Gauge	—	—	—	—
Station	—	—	—	—
Abandoned	—	—	—	—
Stop	—	—	—	—

Universal Transverse Mercator Projection.
Interim corrections 1979
© 1979 Her Majesty the Queen in Right of Canada.
Department of Energy, Mines and Resources.

WOLF LAKE YUKON TERRITORY

Scale 1:250,000
1 Inch to 4 Miles Approximately

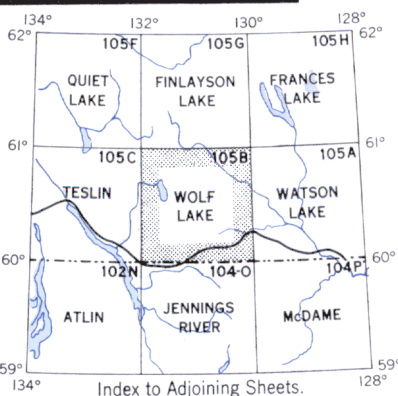


Contour interval 500 Feet
All Elevations in Feet above Mean Sea Level.
Corrections provisoires 1979
© 1979 Sa Majesté La Reine du Chef du Canada.
Ministère de l'Énergie, des Mines et des Ressources.

Copies may be obtained from the Map Distribution Office,
Department of Mines and Technical Surveys, Ottawa

REFERENCE

Building	•	Fire Lookout Tower	†	Contours, Elevation	—
School	—	Wireless Station	—	Contours, Approximate	—
Post Office	P	Mine	—	Contours, Depression	—
Church	—	Cliff	—	Esker	—
Stream, Indefinite or Unsurveyed	—	Wooded Areas	—	Navigable	—
Stream, Intermittent	—	Navigable Canal	—	Rapids and Falls	—
Stream, in Dry River Bed	—	Ferry	—	Dam	—
Braided Stream	—	Lighthouse	—	Aerodrome (Elevation in feet)	—
Marsh or Swamp	—	Seaplane Anchorage	—		—
Marsh or Swamp, in water	—		—		—
Glacier or Snowfield	—		—		—
Sand, Gravel or Mud	—		—		—



WOLF LAKE Y.T.
SHEET 105B
EDITION 3