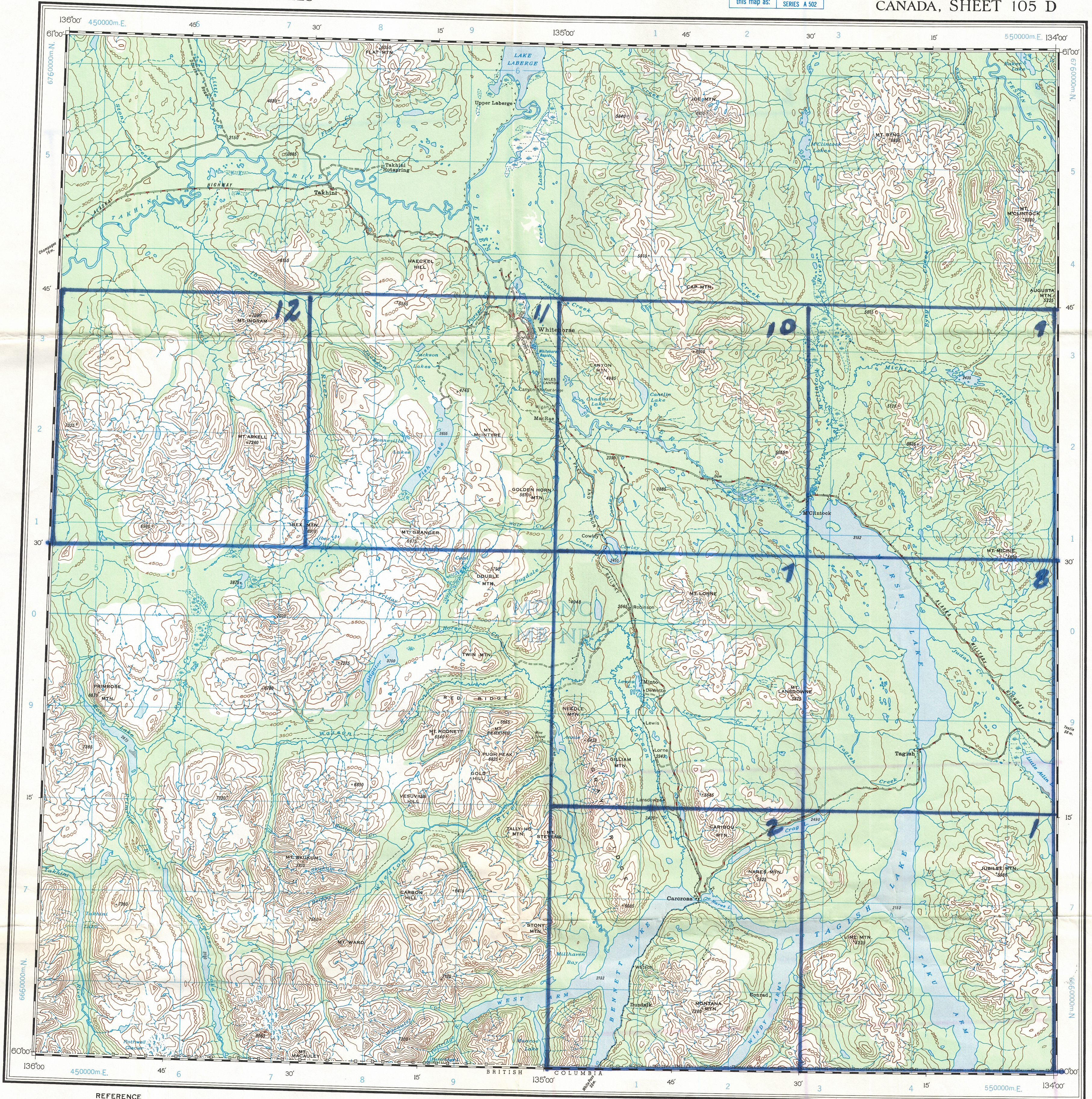


CANADA
DEPARTMENT OF MINES AND RESOURCES
MINES, FORESTS AND SCIENTIFIC SERVICES BRANCH
SURVEYS AND MAPPING BUREAU
TOPOGRAPHICAL SURVEY

Refer to
this map as:
105 D
EDITION 2 ASE
SERIES A 502

CANADA, SHEET 105 D

NATIONAL TOPOGRAPHIC SERIES



REFERENCE

Road, loose surface graded and drained 2 lanes.....
Other roads.....
Trail.....
Railway (narrow gauge).....
Abandoned railway grade.....
Telephone or telegraph line.....
Building.....
School.....
Post Office.....
Provincial boundary and monument.....
Height in feet above mean sea-level.....
Intermittent stream.....
Marsh or swamp.....
Sand or gravel.....
Contours (interval 500 feet).....
Contours (position approximate).....
Wooded areas.....

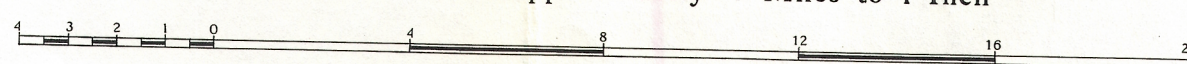
Published 1949.
Surveyed 1944 and compiled, 1947 by the Topographical Survey.
Lithographed and printed by the Army Survey Establishment.
R.C.E. Department of National Defence, 1949.
Approximate magnetic declination, 31° 50' East.

GRID ZONE DESIGNATION		100,000 M. SQUARE IDENTIFICATION	
8V	MC	NC	670
	MB	NB	
			50
TO GIVE A REFERENCE TO NEAREST 1000 METRES			
EXAMPLE: ROAD JUNCTION			
SQUARE: Read letters of 100,000 m. square		NC	
EASTING: Read number on grid line immediately to left of point		0	
Estimate tenths of a square from this line eastward to point.		17	
NORTHING: Read number on grid line immediately below point.		07	
Estimate tenths of a square from this line northward to point.		1	
MILITARY GRID REFERENCE (to nearest 1,000 metres)		NC 0718	
If reporting beyond 18° in any direction, prefix Grid Zone Designation as: 8VNC0718			

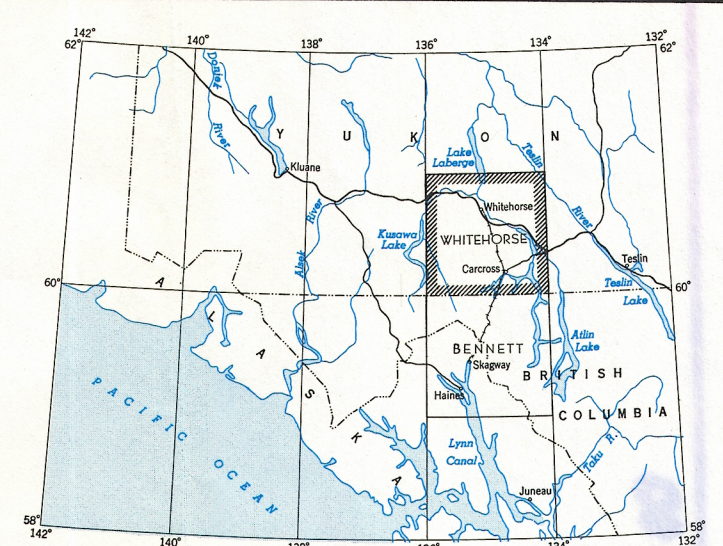
TEN THOUSAND METRE
UNIVERSAL TRANSVERSE MERCATOR GRID
ZONE 8

MAP 953A
WHITEHORSE
YUKON TERRITORY
(FIRST EDITION)

Scale: 1/250,000 or Approximately 4 Miles to 1 Inch



Copies may be obtained from the Map Distribution Office,
Department of Energy, Mines and Resources, Ottawa.



EDITION 2 ASE