

FROM K MCQUART Jan 83

100,000 M. SQUARE IDENTIFICATION

GRID ZONE DESIGNATION

9W

VC WC 72
VB WB
VA VA 71
90

TO GIVE A REFERENCE TO NEAREST 1000 METRES

EXAMPLE: LAKE

EASTING: Read letters of 100,000 m. square VB WC
SQUARE: Read number on grid line immediately to right of point
Estimate tenths of a square from this line eastward to point.

8
8
8

NORTHING: Read number or grid line immediately below point
Estimate tenths of a square from this line northward to point.

6
6
6

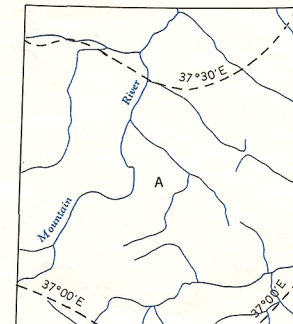
MILITARY GRID REFERENCE VB88866
(to nearest 1,000 metres)

VB88866

If reporting beyond 18° in any direction,
include Grid Zone Designation: QWVB88866

TEN THOUSAND METRE
UNIVERSAL TRANSVERSE MERCATOR GRID
ZONE 9

THE DECLINATION OF THE COMPASS NEEDLE 1959



The declination of the compass needle at any place along a broken line is the declination given on that broken line. At other places the declination is between those given on the neighbouring broken lines; thus at the place marked A, the declination is between $37^{\circ}00'E$ and $37^{\circ}30'E$. The declination of the compass needle is decreasing 6 minutes annually.

Produced and printed by the SURVEYS AND MAPPING
BRANCH, DEPARTMENT OF MINES AND TECHNICAL
SURVEYS, 1959, from air photographs taken between 1949
and 1955.

REFERENCE	
Wagon or winter road	-----
Trail or portage	-----
Village or settlement	-----
Post office	-----
Building or cabin	-----
Horizontal control point	-----
Astronomical position	-----
Spot elevation (in feet)	2550

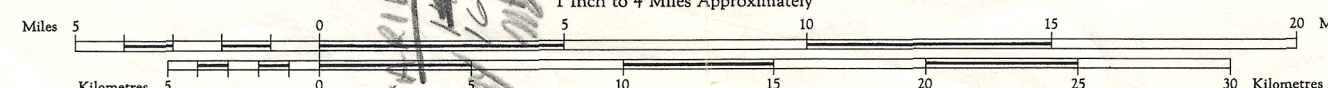
R.C.M.P. map

Transverse Mercator Projection

MOUNT EDUNI
NORTHWEST TERRITORIES
DISTRICT OF MACKENZIE

Scale 1:250,000

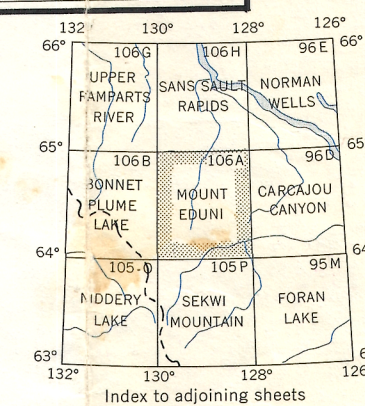
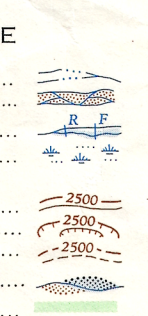
1 Inch to 4 Miles Approximately



Contour Interval 500 Feet
Elevations in Feet above Mean Sea Level
North American Datum 1927.

Copies may be obtained from the Map Distribution Office, Department of Mines and Technical Surveys, Ottawa.

REFERENCE



MOUNT EDUNI
106 A
EDITION 1

REPRINTED
SEPT 4-73

106-A