

This document was produced
by scanning the original publication.

Ce document est le produit d'une
numérisation par balayage
de la publication originale.

NATIONAL TOPOGRAPHIC SYSTEM

1:250,000

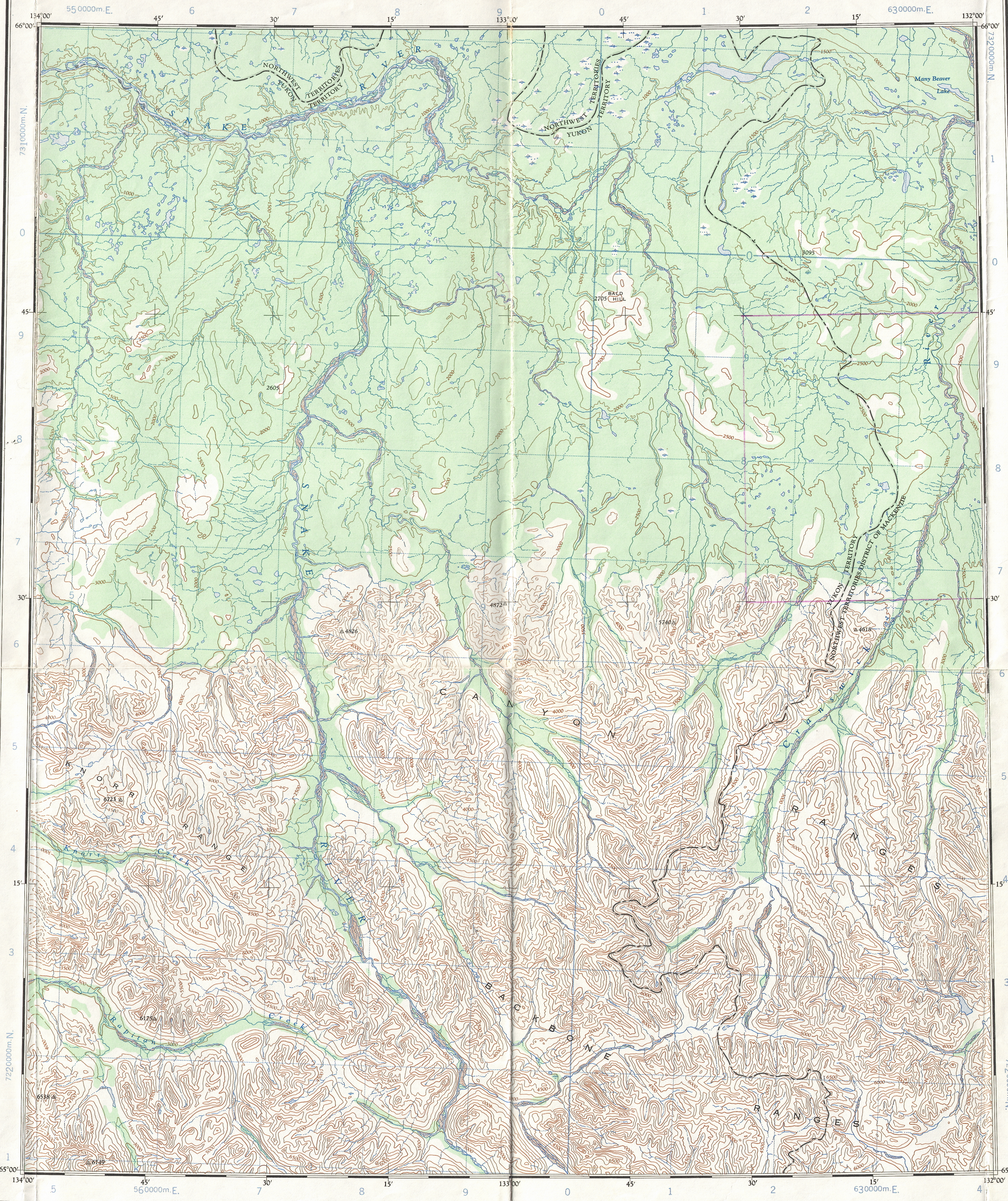
CANADA

FIRST EDITION

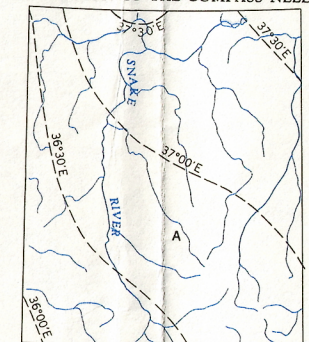
SHEET 106 F

Refer to
this map as:

106 F
EDITION 1 ASE
SERIES A 502



THE DECLINATION OF THE COMPASS NEEDLE 1959



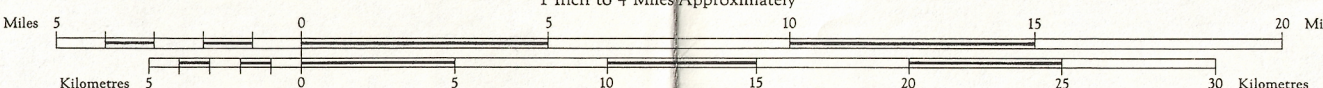
Produced and printed by the SURVEYS AND MAPPING
BRANCH, DEPARTMENT OF MINES AND TECHNICAL
SURVEYS, from air photographs taken in 1949,
1953 and 1954.

Transverse Mercator Projection

SNAKE RIVER
YUKON TERRITORY-NORTHWEST TERRITORIES

Scale 1:250,000

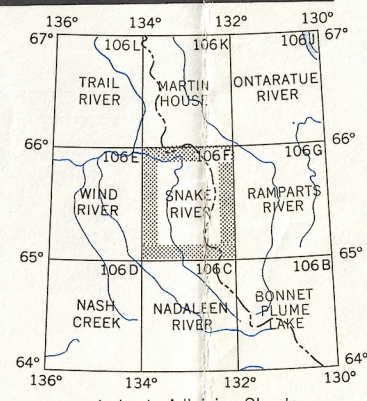
1 Inch to 4 Miles Approximately



Copies may be obtained from the Map Distribution
Office, Department of Mines and Technical
Surveys, Ottawa.

REFERENCE

- Streams: intermittent or dry
- dry river bed
- Sand, gravel or mud
- Marsh or swamp
- Intermittent lake
- Contours: elevation
- depression
- approximate
- Forest



GRID ZONE
DESIGNATION
8W

100,000 M. SQUARE IDENTIFICATION
NH9970

TO GIVE A REFERENCE TO NEAREST 1000 METRES
EXAMPLE: STREAM JUNCTION
SQUARE: Read letters of 100,000 m. square NH
EASTING: Read number on grid line
immediately to left of point
Estimate tenths of a square from
this line eastward to point
NORTHING: Read number on grid line
immediately below point
Estimate tenths of a square from
this line northward to point
MILITARY GRID REFERENCE
(to nearest 1,000 metres) NH9970
If reporting beyond 18° in any direction,
prefix Grid Zone Designation as: 8WNH9970

TEN THOUSAND METRE
UNIVERSAL TRANSVERSE MERCATOR GRID
ZONE 8

TOPOGRAPHICAL SURVEY DIRECTORATE
SERVICE TOPOGRAPHIQUE
DATE 23 Oct 78
Q.C. APPROVES RELEASE
C.Q. APPROUVE

SNAKE RIVER
106F
EDITION 1

Reprints

106-F