

This document was produced
by scanning the original publication.

Ce document est le produit d'une
numérisation par balayage
de la publication originale.

NATIONAL TOPOGRAPHIC SYSTEM

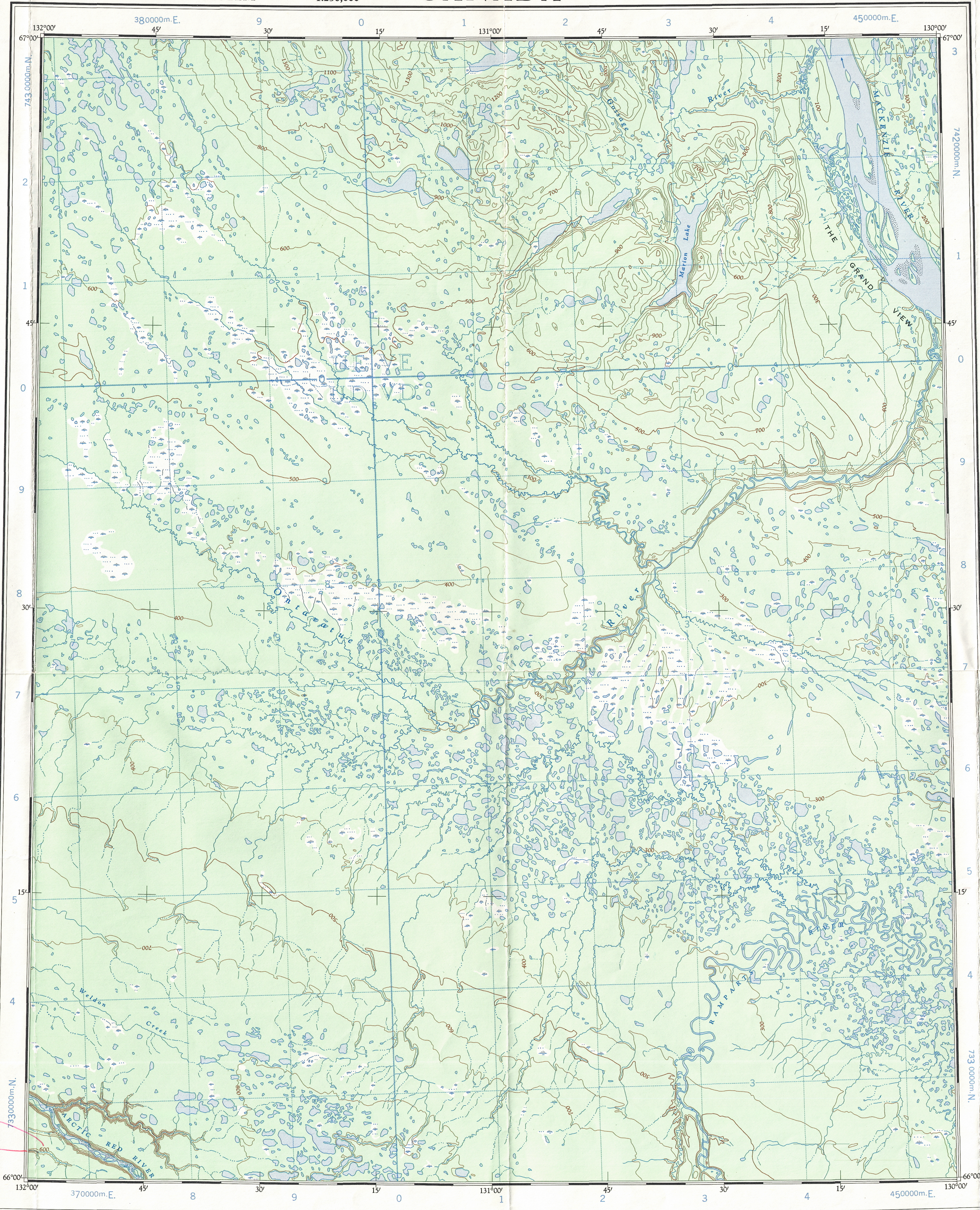
1:250,000

CANADA

FIRST EDITION

SHEET 106 J

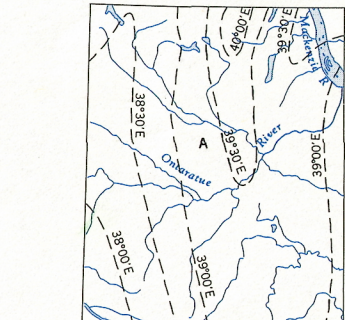
Refer to
this map as: 106 J
EDITION 1 ASE
SERIES A 502



AMR 200

AM LIGHT CONT

THE DECLINATION OF THE COMPASS NEEDLE 1958



The declination of the compass needle at any place along a broken line is the declination given on that broken line. At other places the declination is between those given on the neighbouring broken lines; thus at the place marked A, the declination is between 30°00' E. and 30°30' E. The declination of the compass needle is decreasing 8 minutes annually.

Produced and printed by the SURVEYS AND MAPPING BRANCH, DEPARTMENT OF MINES AND TECHNICAL SURVEYS, 1955, from air photographs taken in 1950 and 1952.

Transverse Mercator Projection

REFERENCE

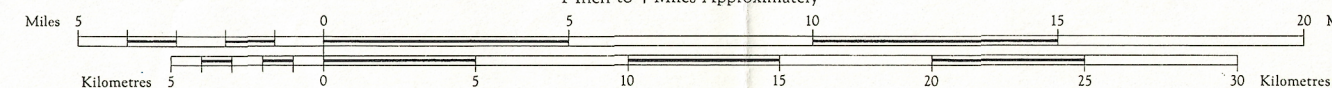
- Wagon or winter road
- Trail or path
- Village or settlement
- Post office
- Building or cabin
- R.C.M.P. post
- Horizontal control point
- Astronomical position
- Spot elevation (in feet)

ONTARATIE RIVER

NORTHWEST TERRITORIES
DISTRICT OF MACKENZIE

Scale 1:250,000

1 inch to 4 Miles Approximately

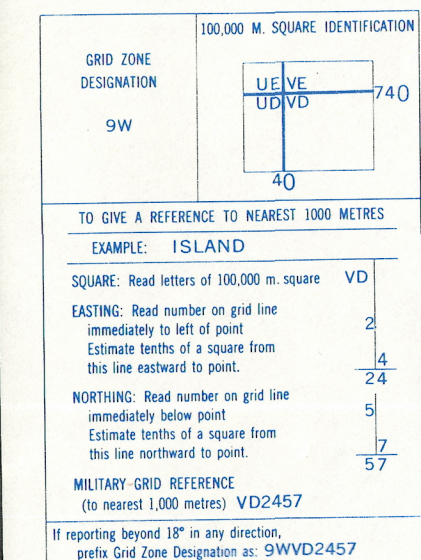


Contour interval 100 Feet
Elevations in Feet above Mean Sea Level
North American Datum 1927

Copies may be obtained from the Map Distribution Office, Department of Mines and Technical Surveys, Ottawa.

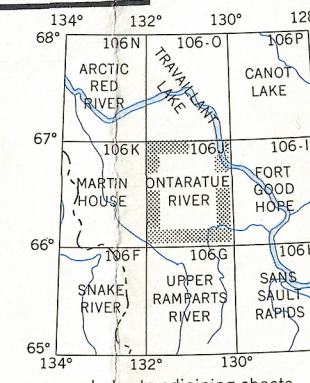
REFERENCE

- Streams: intermittent or dry
- intermittent or dry
- Sand, gravel or mud
- Marsh or swamp
- Contours: elevation
- depression
- approximate
- Forest



TEN THOUSAND METRE
UNIVERSAL TRANSVERSE MERCATOR GRID
ZONE 9

DMP, SPC
CARTOGRAPHY DIVISION
DIVISION DE LA CARTOGRAPHIE
DATE 11-2-76
QC. APPROVES RELEASE
C.Q. APPROUVE



ONTARATIE RIVER
106 J
EDITION 1

Should be screened

Reference given
should have been
screened.