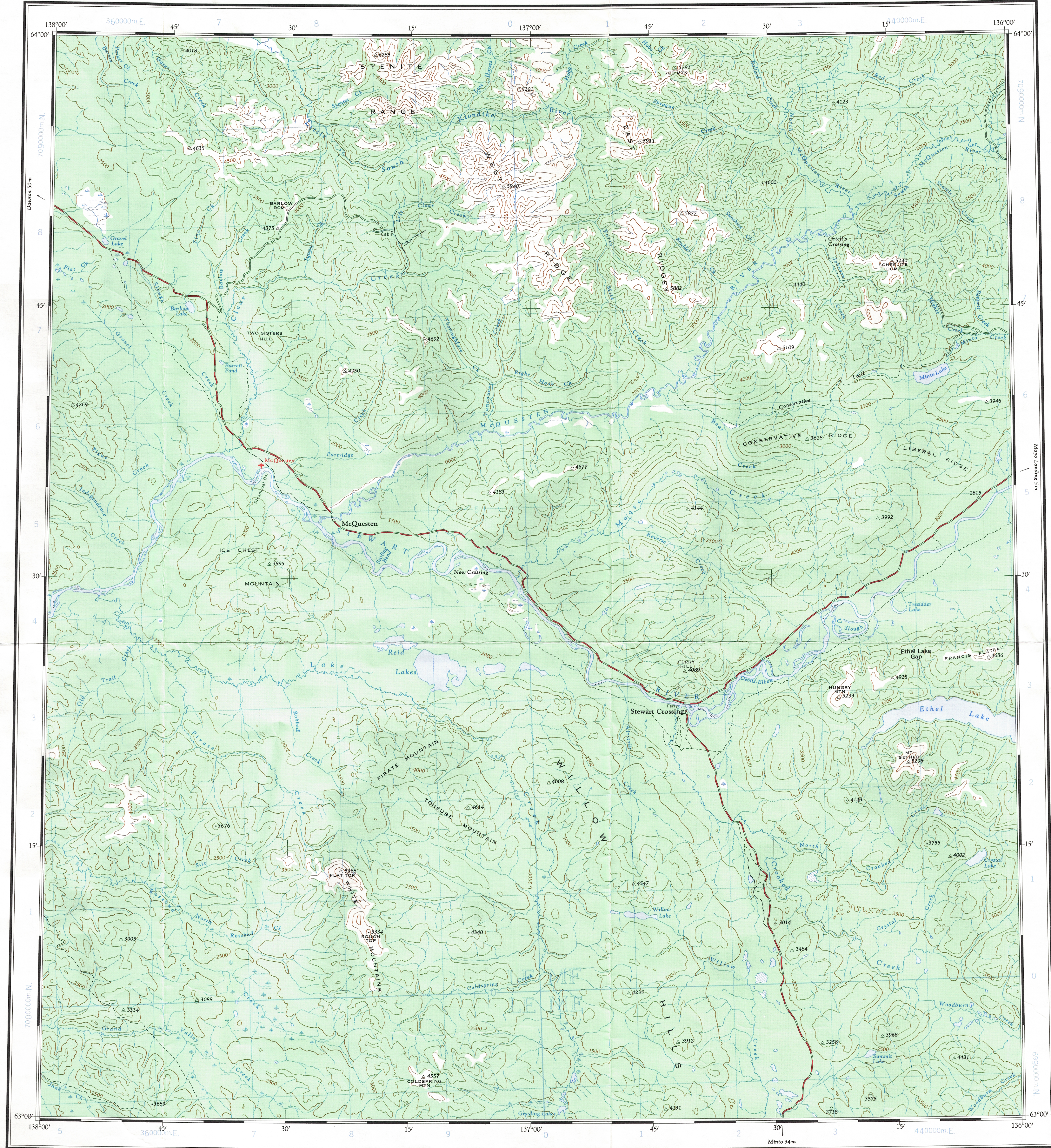


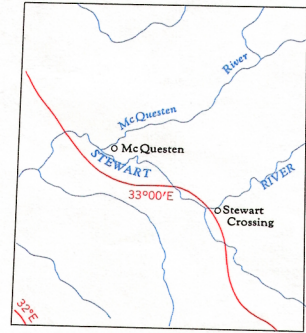
This document was produced by scanning the original publication.

Ce document est le produit d'une numérisation par balayage de la publication originale.

Refer to this map as: 115 P EDITION 3 ASE SERIES A 502



THE DECLINATION OF THE COMPASS NEEDLE IN 1962
DECLINAISON MAGNETIQUE EN 1962



The declination of the compass needle is decreasing 3.9 minutes annually.
La déclinaison magnétique décroît de 3.9 minutes annuellement

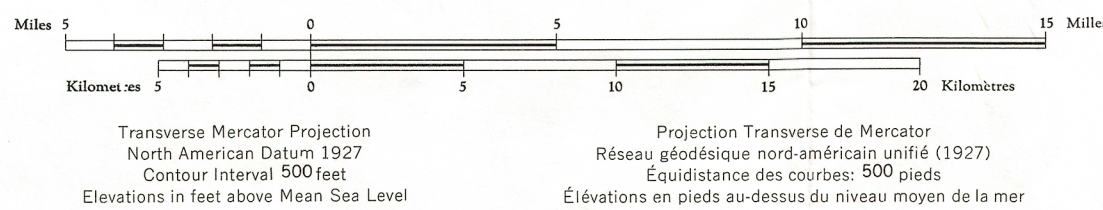
Compiled, 1960, by the SURVEYS AND MAPPING BRANCH,
DEPARTMENT OF MINES AND TECHNICAL SURVEYS,
from large scale maps. Printed 1963.

Copies may be obtained from the Map Distribution
Office, Department of Mines and Technical Surveys,
Ottawa.

Road
hard surface, all weather
loose surface, all weather
wagon, cart track
Railway, normal gauge
Depression contours
Spot elevation
Power transmission line

McQUESTEN YUKON TERRITORY

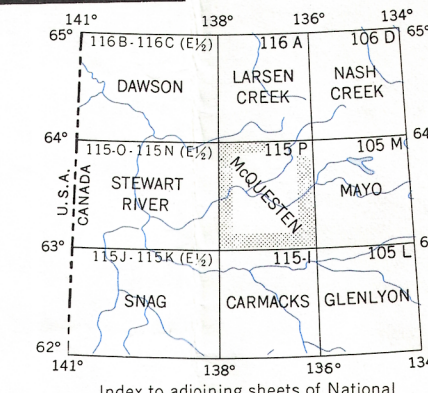
Scale 1:250,000 Échelle



Rédigée en 1960, par la DIRECTION DES LEVÉS ET DE
LA CARTOGRAPHIE, MINISTÈRE DES MINES ET DES RE-
LEVÉS TECHNIQUES, d'après les cartes à large échelle, im-
primées en 1963.

Ces cartes sont en vente au Bureau de distribution des
cartes, ministère des Mines et des Relevés techniques
Ottawa.

Town
Village or Settlement
Post office
Church
School
Boundary monument
Horizontal control point



TOPOGRAPHICAL SURVEY DIRECTORATE
SERVICE TOPOGRAPHIQUE
DATE 31-10-89
C.C. APPROVES RELEASE
C.Q. APPROUVE

MCQUESTEN
115 P

EDITION 3 ASE
REPRINT