

This document was produced
by scanning the original publication.
Ce document est le produit d'une
numérisation par balayage
de la publication originale.

116-O & 116N (E½)

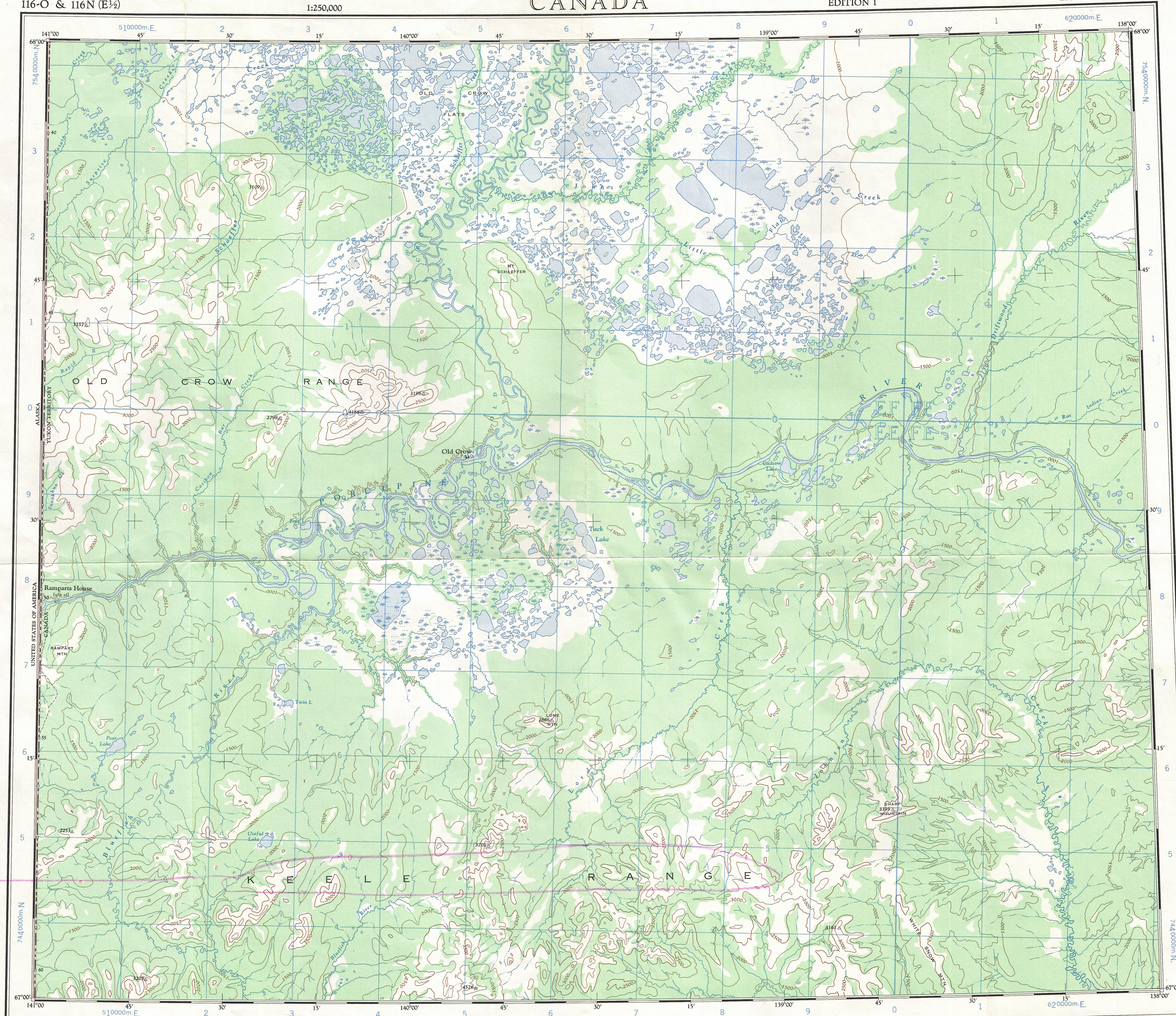
1:250,000

CANADA

EDITION 1

116-O & 116N (E½)

Refer to
this map as:
116O & 116N EAST
EDITION 1 ASE
SERIES A 502



Only on
116 N/1 + 2

TOPOGRAPHICAL SURVEY DIRECTORATE
SERVICES TOPOGRAPHIQUES
Revised Date: 1.2.1954
C.O. APPROVES RELEASE
C.O. APPROUVE

GRID ZONE
DESIGNATION
7W
100,000 M. SQUARE IDENTIFICATION
E F F F
E E F F
50 60
TO GIVE A REFERENCE TO NEAREST 1000 METRES
EXAMPLE: CHURCH
SQUARE: Read letters of 100,000 m. square EE
EASTING: Read number on grid line
immediately to left of point
Estimate tenths of a square from
this line eastward to point.
NORTHING: Read number on grid line
immediately below point
Estimate tenths of a square from
this line northward to point.
MILITARY GRID REFERENCE
(to nearest 1,000 metres) EE 4995
If reporting beyond 10° in any direction,
prefix Grid Zone Designation as 7WEE 4995
TEN THOUSAND METRE
UNIVERSAL TRANSVERSE MERCATOR GRID
ZONE 7

THE DECLINATION OF THE COMPASS NEEDLE 1958
DÉCLINAISON MAGNÉTIQUE EN 1958
The declination of the compass needle is decreasing
6.0 minutes annually.
La déclinaison magnétique décroît de 6.0 minutes annuellement

Produced and printed by the SURVEYS AND MAPPING BRANCH,
DEPARTMENT OF MINES AND TECHNICAL SURVEYS, 1959
from air photographs taken in 1951, 1953 and 1954
Copies may be obtained from the Map Distribution
Office, Department of Mines and Technical Surveys,
Ottawa.
Road surface, all weather... 2 lanes... 2 lanes... 2 lanes...
loose surface, all weather... 2 lanes... 2 lanes... 2 lanes...
wagon, cart track... 2 lanes... 2 lanes... 2 lanes...
Railway, normal gauge... 2 lanes... 2 lanes... 2 lanes...
Depression contours... 2500... 2500... 2500...
Spot elevation, in feet... 2500... 2500... 2500...

Transverse Mercator Projection
North American Datum 1927
Contour Interval 500 feet
Elevations in feet above Mean Sea Level

OLD CROW
YUKON TERRITORY

Scale 1:250,000 Échelle

Miles 5 10 15 20 25 30
Kilometres 5 10 15 20 25 30

Projection Transverse de Mercator
Réseau géodésique nord-américain unifié 1927
Équidistance des courbes: 500 pieds
Élévations en pieds au-dessus du niveau moyen de la mer

Établie et imprimée par la DIRECTION DES LEVÉS ET DE LA CARTOGRAPHIE,
MINISTÈRE DES MINES ET DES RELEVÉS TECHNIQUES,
Ottawa.
Ces cartes sont en vente au Bureau de distribution des
cartes, ministère des Mines et des Relevés Techniques,
Ottawa.

City or large town... Cité ou ville...
Village or Settlement... Village ou hameau...
Post office... Bureau de poste...
Church... Église...
School... École...
Boundary monument... Bonne frontière...
Horizontal control point... Point géodésique...
Stream... Cours d'eau...
Intermittent lake... Lac intermittent...
Rapid; falls... Rapids; chutes...
Marsh or swamp... Marais ou marécage...
Lighthouse... Phare...
Airport... Aéroport...
Seaplane base... Base d'hydravion...

Index to adjoining sheets of National
Topographic System
Tableau d'assemblage du Système de
Référence Cartographique National

Should not have
removed blue change
from this reprint
leo

OLD CROW
116-O & 116N (E½)
EDITION 1

Reprint