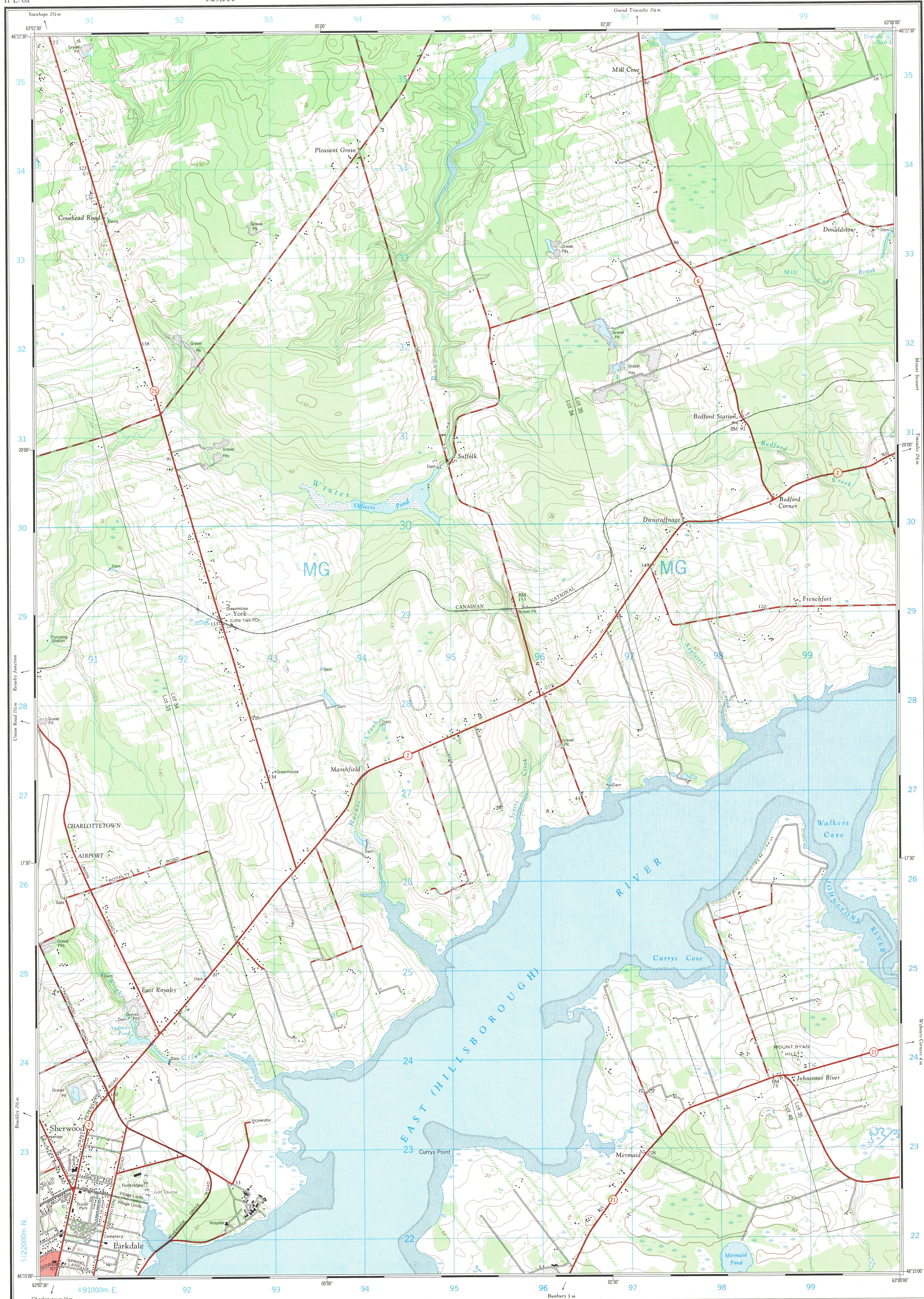


Refer to  
this map as:  
11 L/6a  
EDITION 1 ASE  
SERIES A 891

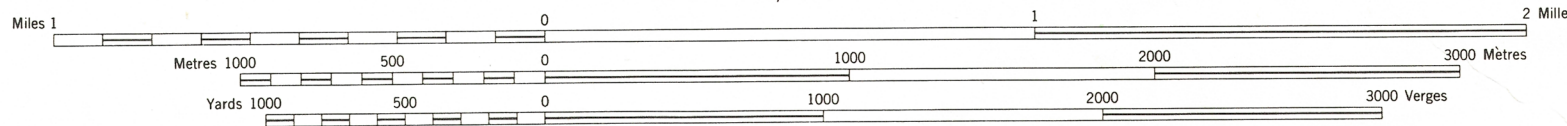


Produced by the SURVEYS AND MAPPING BRANCH, DEPARTMENT OF ENERGY, MINES AND RESOURCES. Information depicted current as of 1964.

Copies may be obtained from the Map Distribution Office, Department of Energy, Mines and Resources, Ottawa.

# YORK QUEENS COUNTY PRINCE EDWARD ISLAND

SCALE 1:25,000 ÉCHELLE

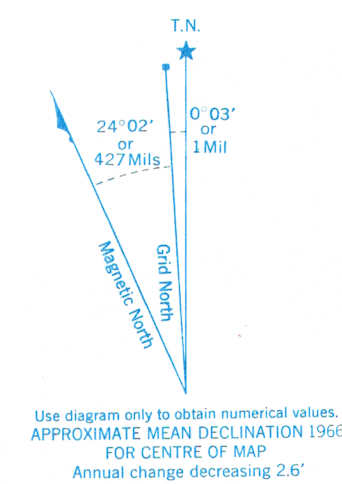
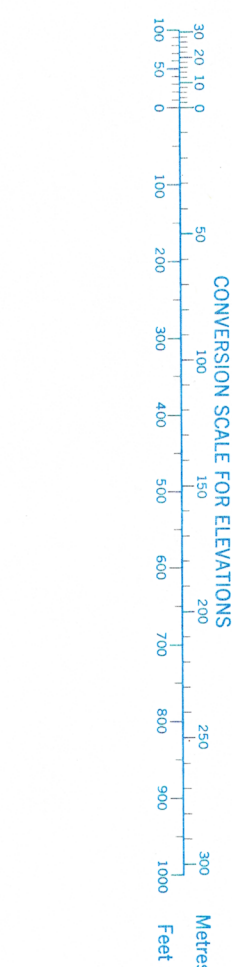


CONTOUR INTERVAL 10 FEET  
Elevations in Feet above Mean Sea Level  
Transverse Mercator Projection  
North American Datum 1927

ÉQUIDISTANCE DES COURBES 10 PIEDS  
Élévations en pieds au-dessus du niveau moyen de la mer  
Projection Transverse du Mercator  
Réseau géodésique nord-américain unifié 1927

Roads:	Routes:
hard surface, all weather	gravel, toute saison
hard surface, all weather	gravel, toute saison
loose or stabilized surface, all weather	gravier aggloméré, toute saison
loose surface, dry weather	de gravier, période sèche
cart track	de terre
trail or portage	santier ou portage
Railway, normal gauge, single track	Chemin de fer, voie unique (écartement normal)
Horizontal control point, with elevation	Point géodésique, avec cote
Bench mark, with elevation	Point de nivellement, avec cote
Spot elevation, precise, approximate	Point coté, précis, approximatif
Mine or Open cut	Mine ou fosse à ciel ouvert

Building	.....	Bâtiment	.....	Church	.....	Église	.....
School	.....	École	.....	Post Office	.....	Bureau de poste	.....
Cemetery	.....	Cimetière	.....	Lighthouse	.....	Phare	.....
Rock, bare or awash, submerged	.....	Roche, nue ou à fleur d'eau, submergée	.....				
Power transmission line	.....	Ligne de transport d'énergie	.....				
River with bridge	.....	Rivière avec pont	.....				
Stream, intermittent or dry	.....	Cours d'eau intermittent, ou à sec	.....				
Lake intermittent, indefinite	.....	Lac intermittent, rive imprécise	.....				
Marsh or Swamp	.....	Marais ou marécage	.....				
Depression contours	.....	Courbes de cuvette	.....				
Trees	.....	Arbres	.....				
Woods	.....	Bois	.....				
Vineyard, Orchard	.....	Vignoble, Verger	.....				



Use diagram only to obtain numerical values.  
APPROXIMATE MEAN DECLINATION 1966  
FOR CENTRE OF MAP  
Annual change decreasing 2.6'

GRID ZONE DESIGNATION	100,000 M. SQUARE IDENTIFICATION
20 T	MG
EXAMPLE:	SCHOOL
EASTING: Read number on grid line immediately to left of point	94
Estimate tenths of a square from this line eastward to point	941
NORTHING: Read number on grid line immediately below point	27
Estimate tenths of a square from this line northward to point	273
MILITARY GRID REFERENCE	941273
Nearest similar grid reference 100,000 metres (about 63 miles)	

ONE THOUSAND METRE  
UNIVERSAL TRANSVERSE MERCATOR GRID  
ZONE 20

TABLEAU D'ASSEMBLAGE DU SYSTÈME NATIONAL DE RÉFÉRENCE CARTOGRAPHIQUE		
63°15'00"	62°52'30"	62°30'00"
46°30'00"	46°07'30"	45°45'00"
11L/6a	11L/6b	11L/6c
11L/6d	11L/6e	11L/6f
11L/6g	11L/6h	11L/6i
11L/6j	11L/6k	11L/6l
63°15'00"	62°52'30"	62°30'00"

NEED TO ADDING MAPS OF THE NATIONAL TOPOGRAPHIC SYSTEM