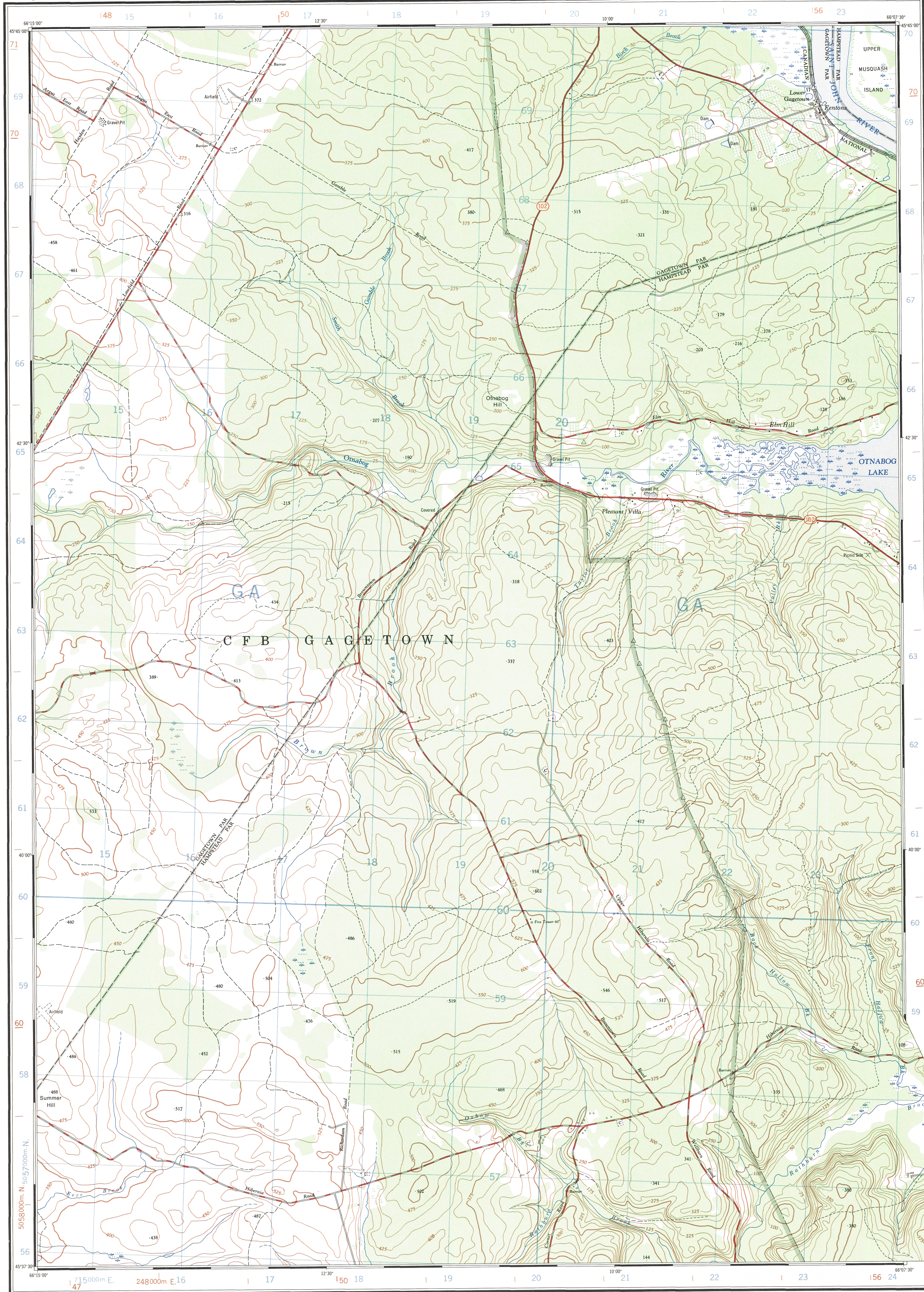


Refer to
this map as:
21 G / 9 g
EDITION 6
SERIES A 891



CONVERSION SCALE FOR ELEVATIONS
Feet
Metres

T.N.
23° 07' or 411 Mils
2° 01' or 36 Mils
Magnetic North
Grid North
Use diagram only to obtain numerical values.
APPROXIMATE MEAN DECLINATION 1973
FOR CENTRE OF MAP
Annual change decreasing 2.1'

ONE THOUSAND METRE
UNIVERSAL TRANSVERSE MERCATOR GRID
ZONE 19

GRID ZONE DESIGNATION	100,000 M. SQUARE IDENTIFICATION
19T	GA

EXAMPLE OF METHOD USED TO GIVE A REFERENCE TO NEAREST 100 METRES THE FOLLOWING GRID REFERENCE IS A SAMPLE ONLY AND DOES NOT REFER TO A POINT ON THIS MAP	
99 98 97	95 96 97 98
REFERENCE POINT	CHURCH (as above)
EASTING: Road number on grid line immediately to left of point Estimated tenths of a square from this line eastward to point	97 1 97.5
NORTHING: Road number on grid line immediately below point Estimated tenths of a square from this line northward to point	98 1 98.4
EXAMPLE MILITARY GRID REFERENCE 975984 Nearest similar grid reference 100,000 metres (about 63 miles)	

BROWN NUMBERED TICKS INDICATE
THE 1000 METRE U.T.M. GRID
ZONE 20

Produced by the SURVEYS AND MAPPING BRANCH,
DEPARTMENT OF ENERGY, MINES AND RESOURCES.
Cultrure check 1971. Printed 1975.

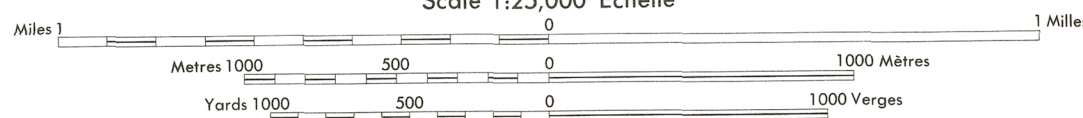
Copies may be obtained from the Canada Map Office,
Department of Energy, Mines and Resources, Ottawa,
or your nearest map dealer.

© Canada Copyrights Reserved 1973

OTNABOG

QUEENS COUNTY
NEW BRUNSWICK

Scale 1:25,000 Échelle



CONTOUR INTERVAL 25 FEET
Elevations in Feet above Mean Sea Level
North American Datum 1927
Transverse Mercator Projection

ÉLOUDESTANCE DES COURBES 25 PIEDS
Élévations en pieds au-dessus du niveau moyen de la mer
Système de référence géodésique nord-américain, 1927
Projection transverse de Mercator

Établi par la DIRECTION DES LEVES ET DE LA CARTOGRAPHIE,
MINISTÈRE DE L'ÉNERGIE, DES MINES ET DES RESSOURCES.
Vérification des ouvrages en 1971. Imprimé en 1975.

Ces cartes sont en vente au Bureau des Cartes du Canada,
ministère de l'Énergie, des Mines et des Ressources, Ottawa,
ou chez le vendeur le plus près.

© Canada 1973, tous droits réservés

Building	Bâtiment	Church	Église
School	École	Post Office	Bureau de poste
Cemetery	Cimetière	Navigation Light	Feu de navigation
Rock, bare or awash	Roche, nue ou à fleur d'eau		
Power transmission line	Ligne de transport d'énergie		
River with bridge	Rivière avec pont		
Rapids, Falls, large, small	Rapides, Chutes, grands, petits		
Lake intermittent, indefinite	Lac intermittent, rive imprécise		
Marsh or Swamp	Marais ou marécage		
Depression contours	Courbes de cuvette		
Trees	Arbres		
Woods	Bois		
Vineyard, Orchard	Vignoble, Verger		

TABLEAU D'ASSEMBLAGE DU SYSTÈME NATIONAL DE RÉFÉRENCE CARTOGRAPHIQUE		
66°22' 30"	66°00' 00"	45°32' 30"
21 G/16c	21 G/16b	21 G/16a
21 G/9f	21 G/9g	21 G/9h
21 G/9e	21 G/9b	21 G/9a
45°30' 00"	45°00' 00"	45°30' 30"
INDEX TO ADJOINING MAPS OF THE NATIONAL TOPOGRAPHIC SYSTEM		

OTNABOG
21 G/9g
EDITION 6