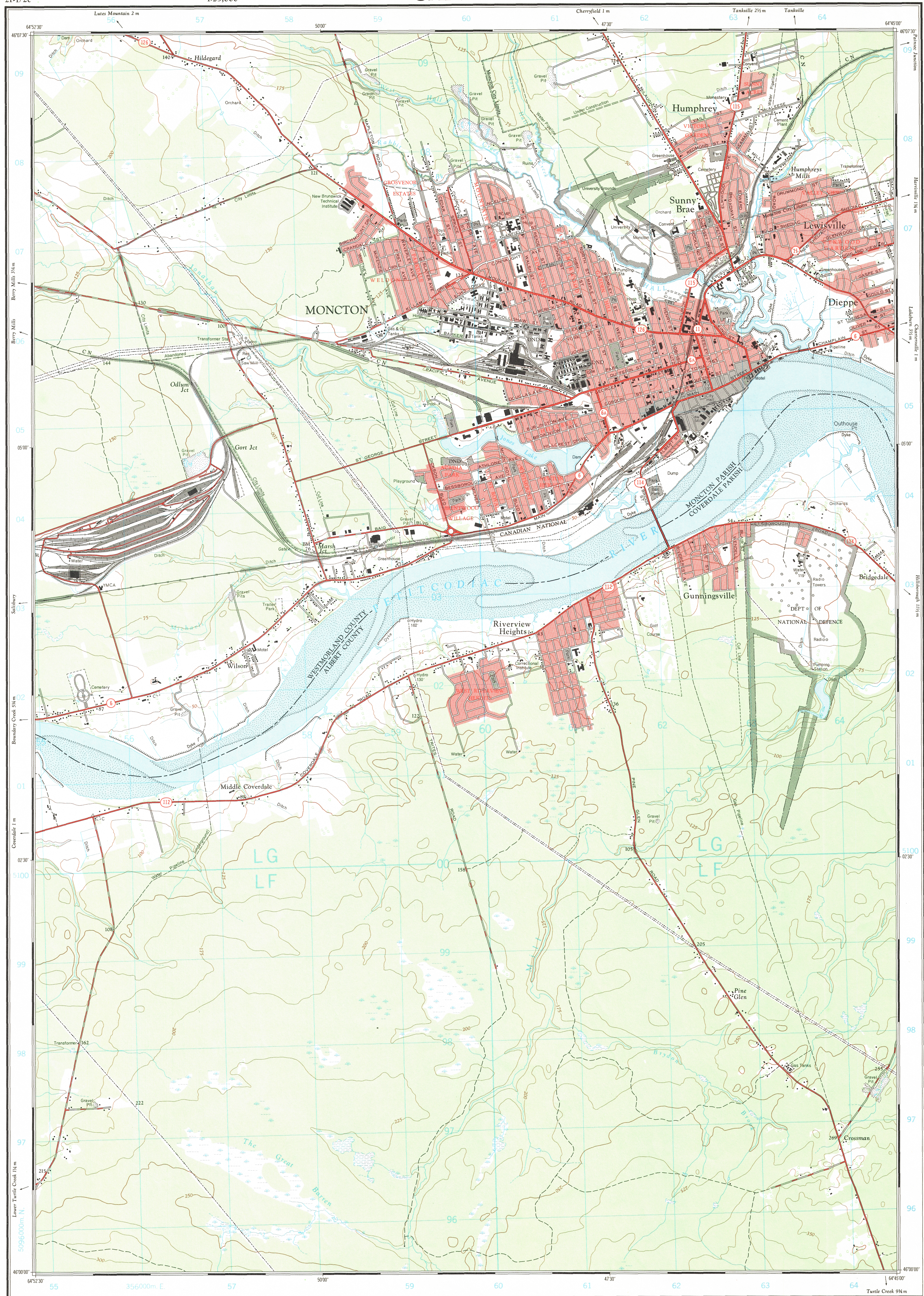


Refer to
this map as:
21 1/2 c
EDITION 1 ASE
SERIES A 891

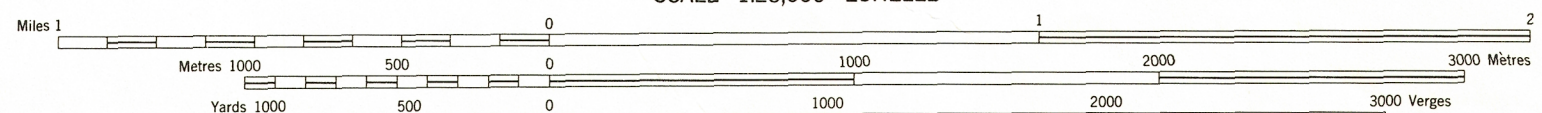


Produced by the SURVEYS AND MAPPING BRANCH, DEPARTMENT OF ENERGY, MINES AND RESOURCES. Information depicted current as of 1965.

Copies may be obtained from the Map Distribution Office, Department of Energy, Mines and Resources, Ottawa.

MONCTON NEW BRUNSWICK

SCALE 1:25,000 ÉCHELLE



CONTOUR INTERVAL 25 FEET
Elevations in Feet above Mean Sea Level

Transverse Mercator Projection
North American Datum 1927

Some names on this map are not yet official.
Corrections or additions are invited by the
Surveys and Mapping Branch.

ÉQUIDISTANCE DES COURBES 25 PIEDS
Élevations en pieds au-dessus du niveau moyen de la mer

Projection transverse de Mercator
Réseau géodésique nord-américain 1927

Certains noms inscrits sur cette carte ne sont
pas encore officiels. La Direction des levés et
de la cartographie saurait gré au public de lui
signaler corrections et additions.

Roads: hard surface, all weather; hard surface, all weather; loose or stabilized surface, all weather; loose surface, dry weather; cart track; trail or portage; Railway, normal gauge, single track; Horizontal control point, with elevation; Bench mark, with elevation; Spot elevation, precise, approximate; Mine or Open cut.

Routiers: pavés, toute saison; pavés, toute saison; gravier aggloméré, toute saison; de gravier, période sèche; sentier ou portage; Chemin de fer, voie unique (écartement normal); Point géodésique, avec cote; Routes de nivellement, avec cote; Point coté, précis, approximatif; Mine ou fosse à ciel ouvert.

Building: School; Cemetery; Rock, bare or washed, submerged; Power transmission line; River with bridge; Stream, intermittent or dry; Marsh or Swamp; Depression contours; Trees; Woods; Vineyard, Orchard; Church; Post Office; Lighthouse; Rocks, rue ou à fleur d'eau, submerged; Rivière avec pont; Cours d'eau intermittent, ou à sec; Lac intermittent, rive imprécise; Marais ou marécage; Courbes de cote; Arbres; Bois; Vignoble, Verger.

GRID ZONE DESIGNATION	100,000 M. SQUARE IDENTIFICATION
20 T	<div> <div>LG</div> <div>LF</div> <div>51</div> </div>

TO OBTAIN A REFERENCE TO NEAREST 100 METRES
EXAMPLE: BRIDGE
EASTING: Read number on grid line immediately to left of point. Estimate tenths of a square from this line outward to point.
NORTHING: Read number on grid line immediately below point. Estimate tenths of a square from this line outward to point.
MILITARY GRID REFERENCE: 597036
Nearest similar grid reference 100,000 metres (about 63 miles)

ONE THOUSAND METRE
UNIVERSAL TRANSVERSE MERCATOR GRID
ZONE 20

TABLEAU D'ASSEMBLAGE DU SYSTÈME NATIONAL DE RÉFÉRENCE CARTOGRAPHIQUE

65°00'00"	64°15'00"	64°30'00"
21/1/2c	21/1/2c	21/1/2c
21/1/2c	21/1/2c	21/1/2c
21/1/2c	21/1/2c	21/1/2c
65°15'00"	64°30'00"	64°45'00"

INDEX TO ADJOINING MAPS OF THE NATIONAL TOPOGRAPHIC SYSTEM

MONCTON
21-1/2c
EDITION 1