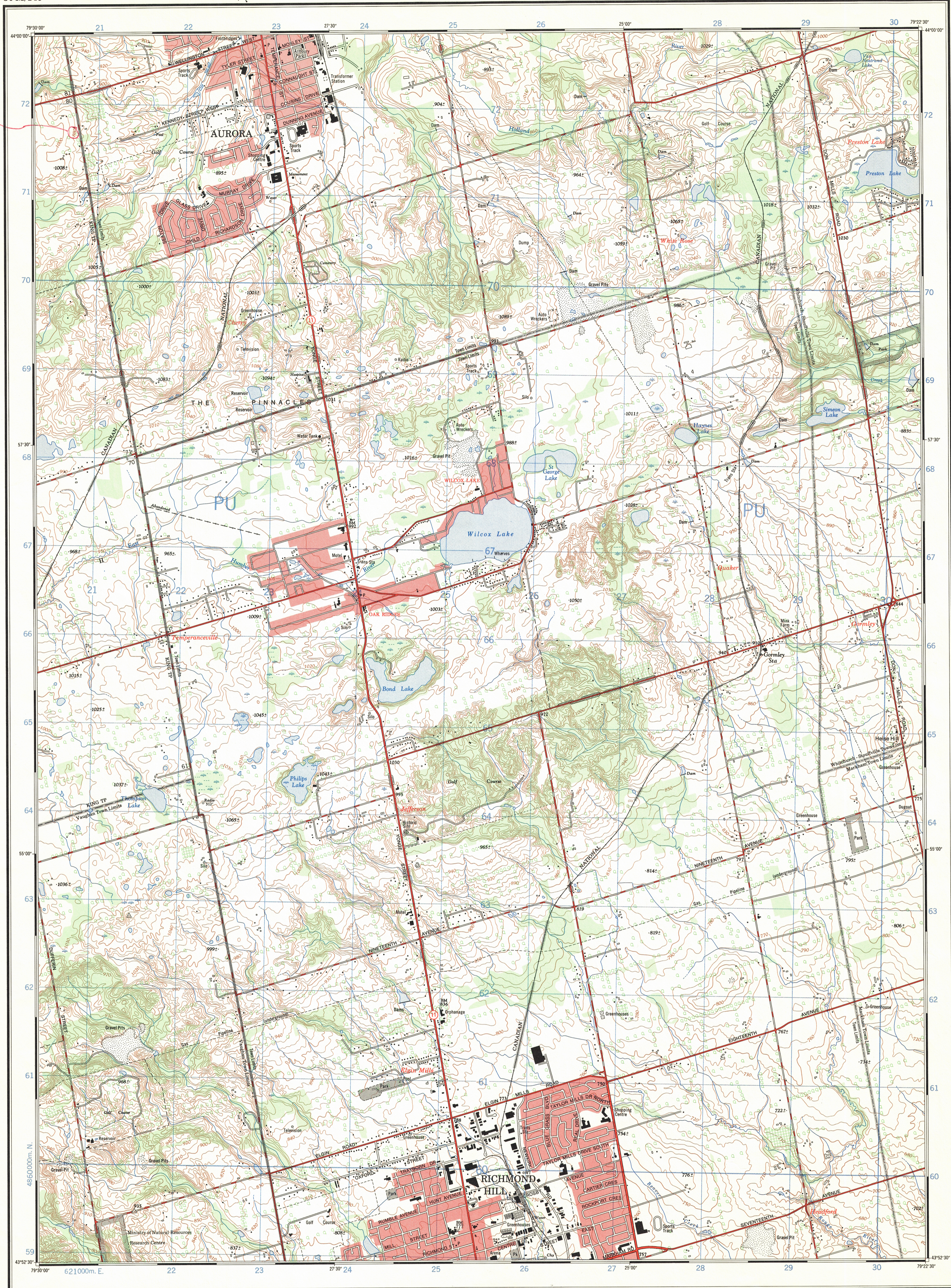


Refer to
this map as:
30 M/14e
EDITION 2 MCE
SERIES A 851

Contour No.
Should 780'
not 580'

This document was produced
by scanning the original publication.
Ce document est le produit d'une
numérisation par balayage
de la publication originale.



CONVERSION SCALE FOR ELEVATIONS
100 200 300 400 500 600 700 800 900 1000
Metres
0 100 200 300 400 500 600 700 800 900 1000
Feet

T.N.
9°37' or 171 Miles
1°05' or 19 Miles
Use diagram only to obtain numerical values.
APPROXIMATE MEAN DECLINATION 1972
FOR CENTRE OF MAP
Annual change increasing 1.0'

ONE THOUSAND METRE
UNIVERSAL TRANSVERSE MERCATOR GRID
ZONE 17

GRID ZONE DESIGNATION	100,000 M. SQUARE IDENTIFICATION
17 T	PU

EXAMPLE OF METHOD USED
TO GIVE A REFERENCE TO NEAREST 100 METRES
THE FOLLOWING GRID REFERENCE IS A SAMPLE ONLY
AND DOES NOT REFER TO A POINT ON THIS MAP

99	98	97	96
97	96	95	94
96	95	94	93
95	94	93	92

REFERENCE POINT	CHURCH (as above)
EASTING: Read number on grid line immediately to left of point	97
Estimate tenths of a square from this line eastward to point	97.5
NORTHING: Read number on grid line immediately below point	96
Estimate tenths of a square from this line northward to point	96.4

EXAMPLE MILITARY GRID REFERENCE 975964
Nearest similar grid reference 100,000 metres (about 63 miles)

Updated by the SURVEYS AND MAPPING BRANCH,
DEPARTMENT OF ENERGY, MINES AND RESOURCES,
from aerial photographs taken in 1969. Culture check 1970.
Printed 1973.

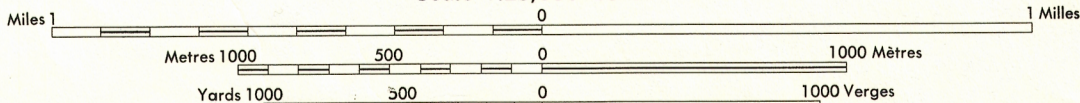
Copies may be obtained from the Canada Map Office,
Department of Energy, Mines and Resources, Ottawa,
or your nearest map dealer.

© Canada Copyrights Reserved 1973

RICHMOND HILL

YORK REGIONAL MUNICIPALITY
ONTARIO

Scale 1:25,000 Échelle



CONTOUR INTERVAL 10 FEET
Elevations in Feet above Mean Sea Level

North American Datum 1927
Transverse Mercator Projection

ÉQUIDISTANCE DES COURBES 10 PIEDS
Elevations en pieds au-dessus du niveau moyen de la mer

Système de référence géodésique nord-américain, 1927
Projection transverse de Mercator

Building	Bâtiment	Church	Église
School	École	Post Office	Bureau de poste
Cemetery	Cimetière	Navigation Light	Feu de navigation
Rock, bare or wash	Roche, nue ou à fleur d'eau		
Power transmission line	Ligne de transport d'énergie		
River with bridge	Rivière avec pont		
Rapids, Falls, large, small	Rapides, Chutes, grands, petits		
Lake intermittent, indefinite	Lac intermittent, rive imprécise		
Marsh or Swamp	Marais ou marécage		
Depression contours	Courbes de cuvette		
Trees	Arbres		
Woods	Bois		
Vineyard, Orchard	Vignoble, Verger		

TABLEAU D'ASSEMBLAGE DU SYSTÈME NATIONAL
DE RÉFÉRENCE CARTOGRAPHIQUE

79°37'30"	79°15'00"	144°07'30"
31 D/4a	31 D/3a	31 D/3c
30 M/13b	30 M/14a	30 M/14i
30 M/13a	30 M/14a	30 M/14c
43°45'00"	43°45'00"	79°15'00"

RICHMOND HILL

30 M/14e

EDITION 2