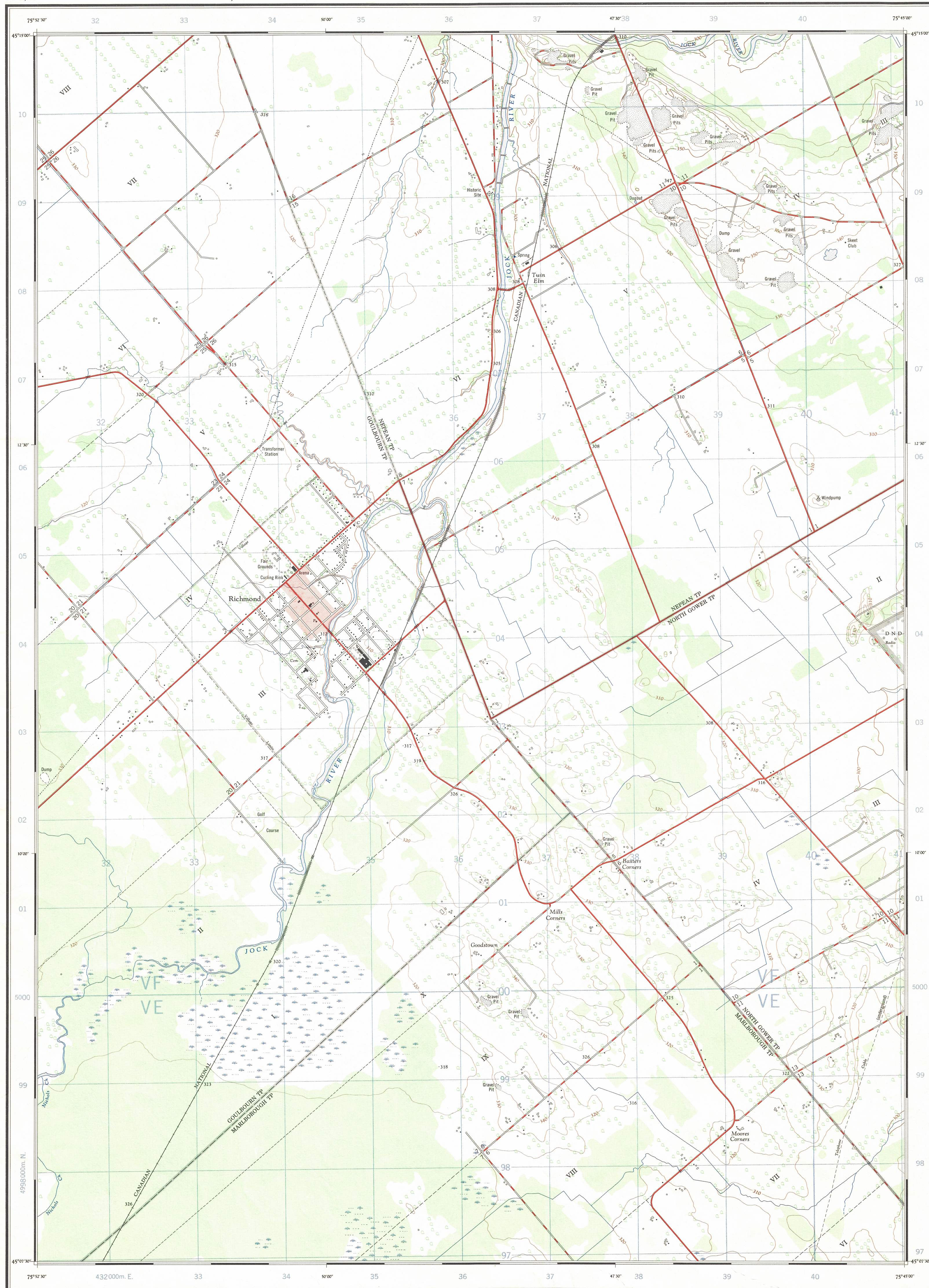


Refer to
this map as:
31G/4f
EDITION 2 MCE
SERIES A 851



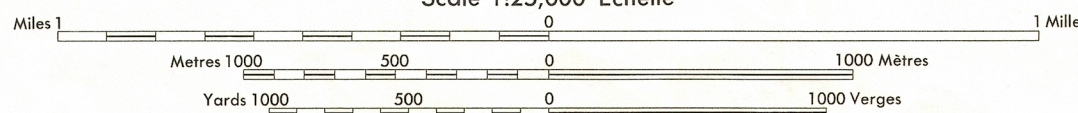
First edition map updated by the SURVEYS AND MAPPING BRANCH,
DEPARTMENT OF ENERGY, MINES AND RESOURCES. Information
depicted current as of 1968. Printed 1970.

Copies may be obtained from the Map Distribution Office,
Department of Energy, Mines and Resources, Ottawa.

RICHMOND

CARLETON COUNTY
ONTARIO

Scale 1:25,000 Échelle



CONTOUR INTERVAL: 10 FEET
Elevations in feet above Mean Sea Level
North American Datum 1927
Transverse Mercator Projection

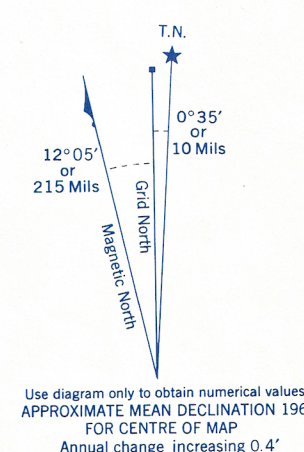
ÉLOUDESTANCE DES COURBES: 10 PIÈDS
Élévations en pieds au-dessus du niveau moyen de la mer
Système de référence géodésique nord-américain 1927
Projection transverse de Mercator

Roads:	Routes:	
hard surface, all weather.....	pavée, toute saison.....	2 chaussées séparées plus de 2 voies
hard surface, all weather.....	pavée, toute saison.....	2 voies
loose or stabilized surface, all weather.....	gravier aggloméré, toute saison.....	2 voies ou plus
loose surface, dry weather.....	de gravier, période sèche.....	2 voies ou plus
car track.....	de terre.....	
trail or portage.....	sentier ou portage.....	
Railway, normal gauge, single track.....	Chemin de fer, voie unique (écartement normal), voie d'évitement.....	
Horizontal control point, with elevation.....	Point géodésique, avec cote.....	
Bench mark, with elevation.....	Repère de nivellement, avec cote.....	
Spot elevation, precise.....	Point coté, précis.....	
Mine or open cut.....	Mine ou fosse à ciel ouvert.....	

Building.....	Bâtiment.....	Church.....	Église.....
School.....	École.....	Post Office.....	Bureau de poste.....
Cemetery.....	Cimetière.....	Navigation Light.....	Feu de navigation.....
Rock, bare or awash.....	Roche, nue ou à fleur d'eau.....		
Power transmission line.....	Ligne de transport d'énergie.....		
River with bridge.....	Rivière avec pont.....		
Rapids, Falls, large small.....	Rapides, Chutes, grands, petits.....		
Lake intermittent, indefinite.....	Lac intermittent, indéfini.....		
Marsh or Swamp.....	Marais ou marécage.....		
Depression contours.....	Courbes de cuvette.....		
Trees.....	Arbres.....		
Woods.....	Bois.....		
Vineyard, Orchard.....	Vignoble, Verger.....		

CONVERSION SCALE FOR ELEVATIONS
Approximate Mean Declination 1969
FOR CENTRE OF MAP
Annual change increasing 0.4"

Feet
Meters



GRID ZONE DESIGNATION	18 T
TO GIVE A REFERENCE TO NEAREST 100 METRES	
EXAMPLE: CHURCH	
EASTING: Road number on grid line immediately to left of point. Estimate tenths of a square from this line eastward to point.	34 3
NORTHING: Road number on grid line immediately below point. Estimate tenths of a square from this line northward to point.	03 3
MILITARY GRID REFERENCE	343035
Nearest similar grid reference 100,000 metres (abbr.)	343035

ONE THOUSAND METRE
UNIVERSAL TRANSVERSE MERCATOR GRID
ZONE 18

TABLEAU D'ASSEMBLAGE DU SYSTÈME NATIONAL DE RÉFÉRENCE CARTOGRAPHIQUE			
76°00'00"	75°37'30"	75°00'00"	74°22'30"
31 G/5d	31 G/5c	31 G/5b	
31 G/4e	31 G/4f	31 G/4g	
31 G/4d	31 G/4c	31 G/4b	
45°00'00"	45°22'30"	45°00'00"	45°22'30"