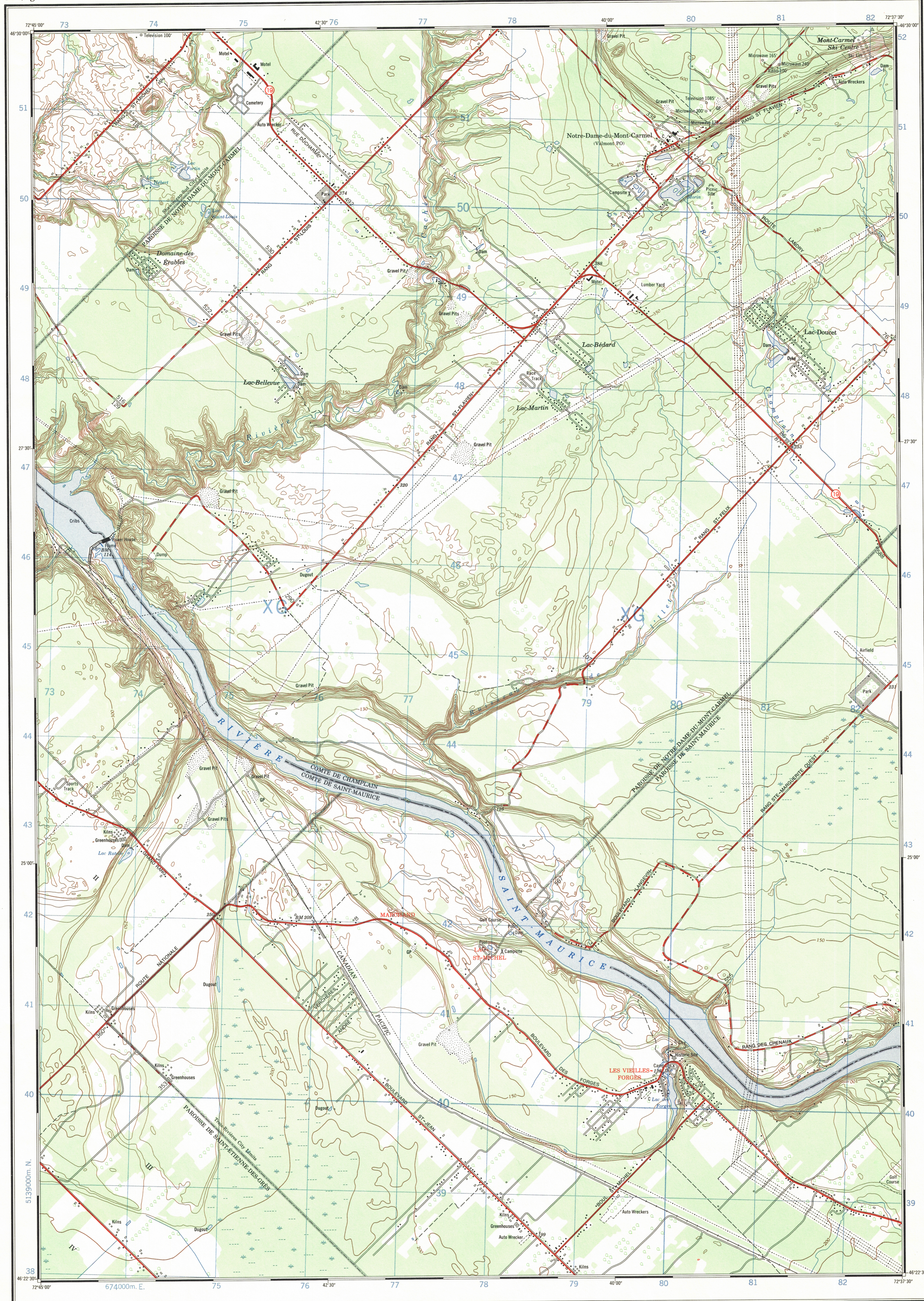
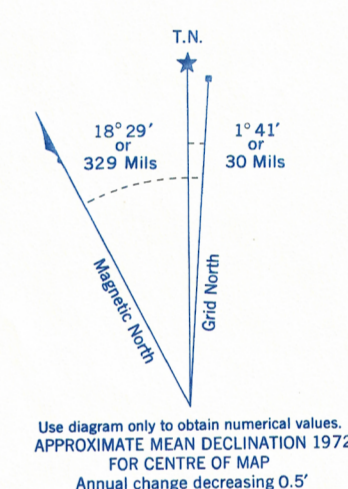


Refer to
this map as:
31-1/7g
EDITION 1 MCE
SERIES A861



CONVERSION SCALE FOR ELEVATIONS
Feet
Mètres



ONE THOUSAND METRE
UNIVERSAL TRANSVERSE MERCATOR GRID
ZONE 18

GRID ZONE DESIGNATION	100,000 M. SQUARE IDENTIFICATION
18 T	XG

EXAMPLE OF METHOD USED
TO GIVE A REFERENCE TO NEAREST 100 METRES
THE FOLLOWING GRID REFERENCE IS A SAMPLE ONLY
AND DOES NOT REFER TO A POINT ON THIS MAP

REFERENCE POINT	CHURCH	(as above)
EASTING: Read number on grid line immediately to left of point	97	
Estimate tenths of a square from this line eastward to point	97.5	
NORTHING: Read number on grid line immediately below point	98	
Estimate tenths of a square from this line northward to point	98.4	

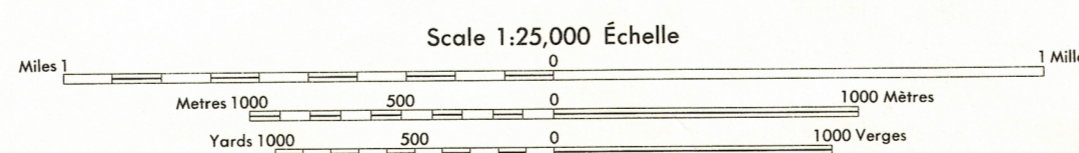
EXAMPLE MILITARY GRID REFERENCE 975984
Nearest similar grid reference 100,000 metres (about 63 miles)

Produced by the SURVEYS AND MAPPING BRANCH,
DEPARTMENT OF ENERGY, MINES AND RESOURCES.
Information dated current as of 1975. Printed 1975.

Copies may be obtained from the Canada Map Office,
Department of Energy, Mines and Resources, Ottawa,
or your nearest map dealer.

© Canada Copyrights Reserved 1973

VALMONT QUÉBEC



CONTOUR INTERVAL 10 FEET
Elevations in Feet above Mean Sea Level
North American Datum 1927
Transverse Mercator Projection

ÉLOUANCE DES COURSES 10 PIEDS
Élevations en pieds au-dessus du niveau moyen de la mer
Système de référence géodésique nord-américain, 1927
Projection transverse de Mercator

Building.....	Bâtiment.....	Church.....	Église.....
School.....	École.....	Post Office.....	Bureau de poste.....
Cemetery.....	Cimetière.....	Navigation Light.....	Feu de navigation.....
Rock, bare or awash.....	Roche, nue ou à fleur d'eau.....		
Power transmission line.....	Ligne de transport d'énergie.....		
River with bridge.....	Rivière avec pont.....		
Rapids, falls, large small.....	Rapides, Chutes, grands, petits.....		
Lake intermittent, indefinite.....	Lac intermittent, rive imprécise.....		
Marsh or Swamp.....	Marais ou marécage.....		
Depression contours.....	Courbes de cuvette.....		
Trees.....	Arbres.....		
Woods.....	Bois.....		
Vineyard, Orchard.....	Vignoble, Verger.....		

TABLEAU D'ASSEMBLAGE DU SYSTÈME NATIONAL
DE RÉFÉRENCE CARTOGRAPHIQUE

72°52'30"	72°30'00"	72°30'00"
46°37'30"	31-1/7c	31-1/7d
	31-1/7f	31-1/7g
	31-1/7e	31-1/7h
46°15'00"	72°52'30"	72°30'00"

INDEX TO ADDING MAPS OF
THE NATIONAL TOPOGRAPHIC SYSTEM

VALMONT
31-1/7g
EDITION 1

This document was produced
by scanning the original publication.
Ce document est le produit d'une
numérisation par balayage
de la publication originale.