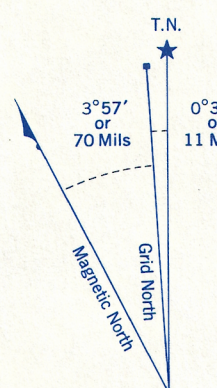


Refer to  
this map as:  
40-I/13 e  
EDITION 1 MCE  
SERIES A 851

CONVERSION SCALE FOR ELEVATIONS

Feet  
Meters

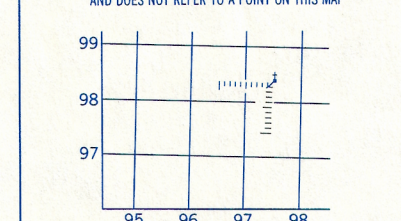


Use diagram only to obtain numerical values.  
APPROXIMATE MEAN DECLINATION 1969  
FOR CENTRE OF MAP  
Annual change increasing 1.9'

ONE THOUSAND METRE  
UNIVERSAL TRANSVERSE MERCATOR GRID  
ZONE 17

GRID ZONE DESIGNATION	100,000 M. SQUARE IDENTIFICATION
17 T	MT

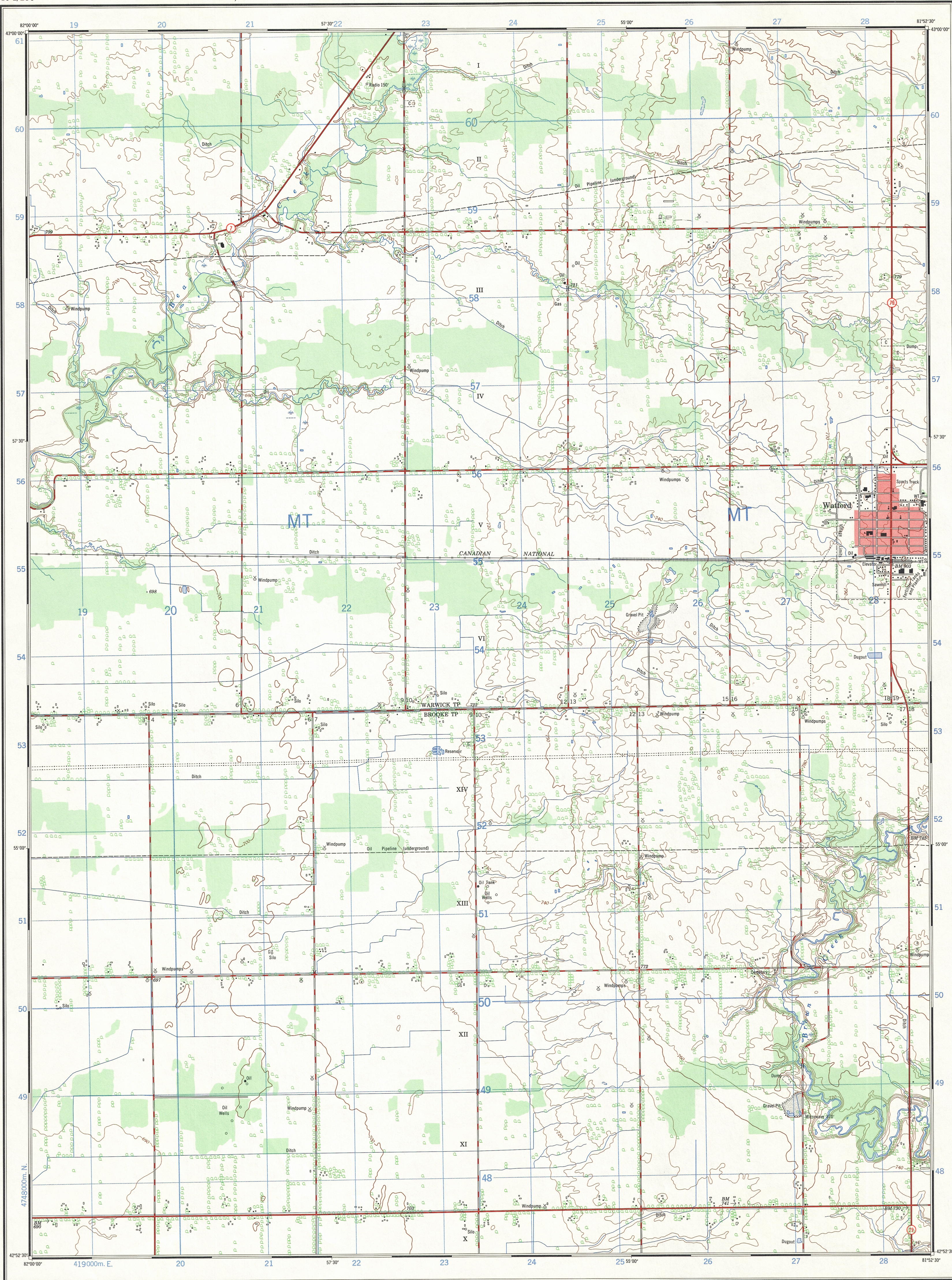
EXAMPLE OF METHOD USED  
TO GIVE A REFERENCE TO NEAREST 100 METRES  
THE FOLLOWING GRID REFERENCE IS A SAMPLE ONLY  
AND DOES NOT REFER TO A POINT ON THIS MAP



REFERENCE POINT	CHURCH (as above)
EASTING: Read number on grid line immediately to left of point. Estimate tenths of a square from this line eastward to point.	97 5 975
NORTHING: Read number on grid line immediately below point. Estimate tenths of a square from this line northward to point.	98 4 984

EXAMPLE MILITARY GRID REFERENCE 975984

Nearest similar grid reference 100,000 metres (about 63 miles)



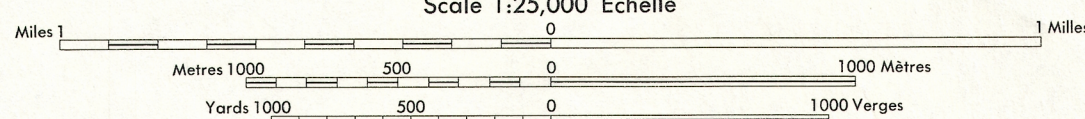
Produced by the SURVEYS AND MAPPING BRANCH,  
DEPARTMENT OF ENERGY, MINES AND RESOURCES.  
Information depicted current as of 1969. Printed 1972.

Copies may be obtained from the Map Distribution Office,  
Department of Energy, Mines and Resources, Ottawa.

## WATFORD

LAMBTON COUNTY  
ONTARIO

Scale 1:25,000 Échelle



CONTOUR INTERVAL 10 FEET  
Elevations in Feet above Mean Sea Level  
North American Datum 1927  
Transverse Mercator Projection

ÉQUIDISTANCE DES COURBES 10 PIEDS  
Elevations in Feet au-dessus du niveau moyen de la mer  
Système de référence géodésique nord-américain, 1927  
Projection transverse de Mercator

Roads:	Routes:
hard surface, all weather.....	pavée, toute saison.....
hard surface, all weather.....	pavée, toute saison.....
loose or stabilized surface, all weather.....	gravier aggloméré, toute saison.....
loose surface, dry weather.....	de gravier période sèche.....
cart track.....	de terre.....
trail or portage.....	sentier ou portage.....
Railway, normal gauge, single track.....	Chemin de fer, voie unique (écartement normal).....
Horizontal control point, with elevation.....	Point géodésique, avec cote.....
Bench mark, with elevation.....	Repère de nivellement, avec cote.....
Spot elevation, precise.....	Point coté, précis.....
Mine or open cut.....	Mine ou fosse à ciel ouvert.....

Building.....	Bâtiment.....	Church.....	Église.....
School.....	École.....	Post Office.....	Bureau de poste.....
Cemetery.....	Cimetière.....	Navigation Light.....	Feu de navigation.....
Rock, bare or awash.....	Roche, nue ou à fleur d'eau.....	Power transmission line.....	Ligne de transport d'énergie.....
River with bridge.....	Rivière avec pont.....	Rapids, Falls, large small.....	Rapides, Chutes, grands, petits.....
Lake intermittent, indefinite.....	Lac intermittent, indéfini.....	Marsh or Swamp.....	Marais ou marécage.....
Depression contours.....	Courbes de cuvette.....	Trees.....	Arbres.....
Woods.....	Bois.....	Vineyard, Orchard.....	Vignoble, Verger.....

Établi par la DIRECTION DES LEVÉS ET DE LA CARTOGRAPHIE,  
MINISTÈRE DE L'ÉNERGIE, DES MINES ET DES RESSOURCES.  
Renseignements à jour en 1969. Imprimé en 1972.

Ces cartes sont en vente au Bureau de distribution des cartes,  
ministère de l'Énergie, des Mines et des Ressources, Ottawa.

TABLEAU D'ASSEMBLAGE DU SYSTÈME NATIONAL  
DE RÉFÉRENCE CARTOGRAPHIQUE

40-I/13e	40-I/13e	40-I/13e
40-I/13e	40-I/13e	40-I/13e
40-I/13e	40-I/13e	40-I/13e

INDEX TO ADJOINING MAPS OF  
THE NATIONAL TOPOGRAPHIC SYSTEM

WATFORD  
40-I/13e  
EDITION 1