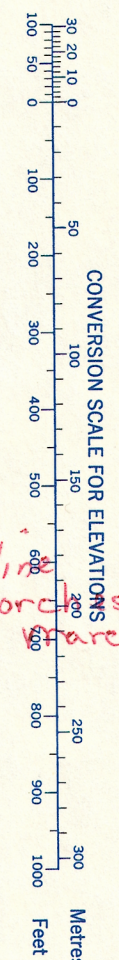
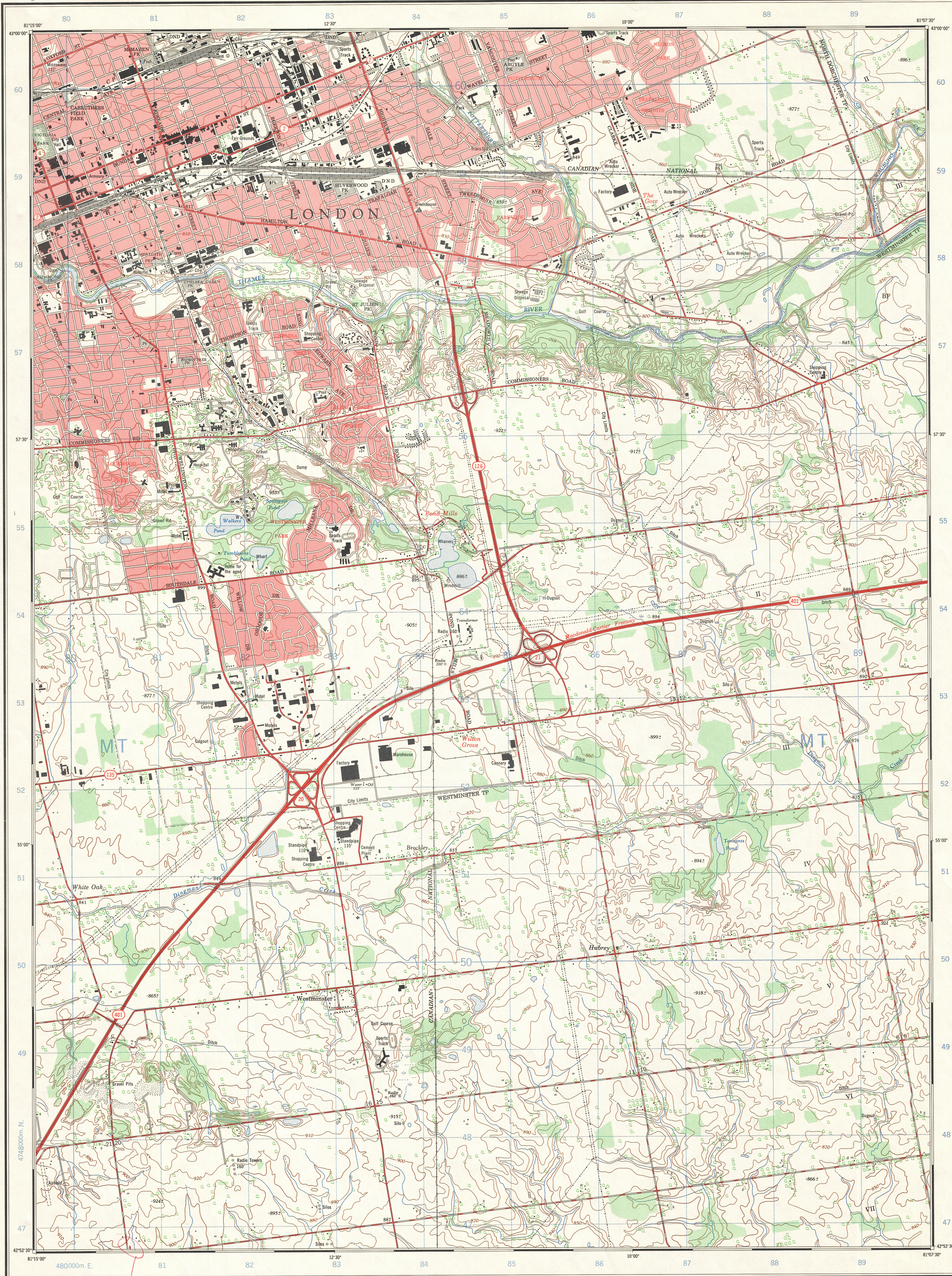
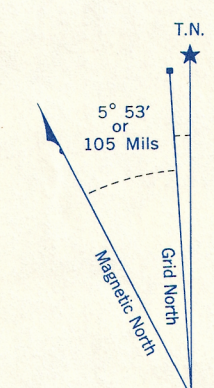


Refer to  
this map as:  
40-1/14g  
EDITION 3 MCE  
SERIES A 851



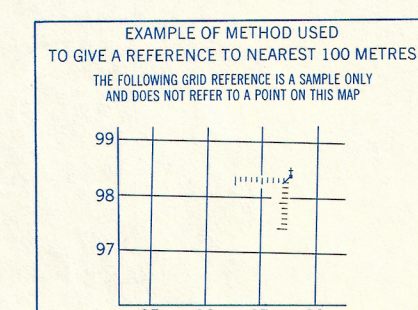
Gas Pipeline  
To join Dorchester  
40-1/4-2 Search 64  
B.P.A.



Use diagram only to obtain numerical values.  
APPROXIMATE MEAN DECLINATION 1972  
FOR CENTRE OF MAP  
Annual change increasing 1.7"

ONE THOUSAND METRE  
UNIVERSAL TRANSVERSE MERCATOR GRID  
ZONE 17

GRID ZONE DESIGNATION	100,000 M. SQUARE IDENTIFICATION
17 T	MT



REFERENCE POINT	CHURCH (as above)
EASTING: Read number on grid line immediately to left of point. Estimate tenths of a square from this line eastward to point.	97 5 975
NORTHING: Read number on grid line immediately below point. Estimate tenths of a square from this line northward to point.	96 4 964

EXAMPLE MILITARY GRID REFERENCE 975964  
Nearest similar grid reference 100,000 metres (about 65 miles)

Produced by the SURVEYS AND MAPPING BRANCH,  
DEPARTMENT OF ENERGY, MINES AND RESOURCES.  
Culture check 1970. Printed 1973.

Copies may be obtained from the Canada Map Office,  
Department of Energy, Mines and Resources, Ottawa,  
or your nearest map dealer.

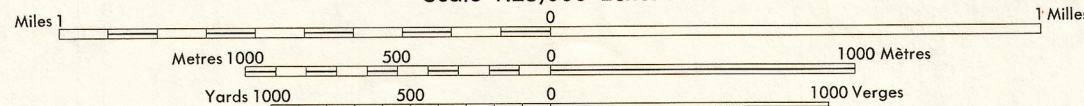
© Canada Copyrights Reserved 1973

Gas pipeline from sheet  
below to be continued  
on this sheet.

## POND MILLS

MIDDLESEX COUNTY  
ONTARIO

Scale 1:25,000 Échelle



CONTOUR INTERVAL 10 FEET  
Elevations in Feet above Mean Sea Level  
North American Datum 1927  
Transverse Mercator Projection

EQUIDISTANCE DES COURBES 10 PIEDS  
Élevations en pieds au-dessus du niveau moyen de la mer  
Système de référence géodésique nord-américain, 1927  
Projection Transverse de Mercator

Communities within cities and towns are named in red.

Les communautés à l'intérieur des cités et des villes sont désignées en rouge.

Building	Bâtiment	Church	Église
School	École	Post Office	Bureau de poste
Cemetery	Cimetière	Navigation Light	Feu de navigation
Rock, bare or awash	Roche, nue ou à fleur d'eau		
Power transmission line	Ligne de transport d'énergie		
River with bridge	Rivière avec pont		
Rapids, Falls, large, small	Rapides, Chutes, grands, petits		
Lake intermittent, indefinite	Lac intermittent, rive imprécise		
Marsh or Swamp	Marais ou marécage		
Depression contours	Courbes de cuvette		
Trails	Arbres		
Woods	Bois		
Vineyard, Orchard	Vignoble, Verger		

Établi par la DIRECTION DES LEVÉS ET DE LA CARTOGRAPHIE,  
MINISTÈRE DE L'ÉNERGIE, DES MINES ET DES RESSOURCES.

Ces cartes sont en vente au Bureau des Cartes du Canada,  
ministère de l'Énergie, des Mines et des Ressources, Ottawa,  
ou chez le vendeur le plus près.

© Canada 1973, tous droits réservés

TABLAU D'ASSEMBLAGE DU SYSTÈME NATIONAL  
DE RÉFÉRENCE CARTOGRAPHIQUE

43°00' 30"	81°00' 00"	43°00' 30"
40-1/3c	40-1/3g	40-1/3a
40-1/14f	40-1/14g	40-1/14h
40-1/14c	40-1/14b	40-1/14a
42°45' 00"	81°00' 00"	42°45' 00"

INDEX TO ADDING MAPS OF  
THE NATIONAL TOPOGRAPHIC SYSTEM

POND MILLS  
40-1/14g  
EDITION 3