

Refer to
this map as: 40 J/2g
EDITION 1 MCE
SERIES A 851

CONVERSION SCALE FOR ELEVATIONS
100 200 300 400 500 600 700 800 900 1000
Feet
Metres

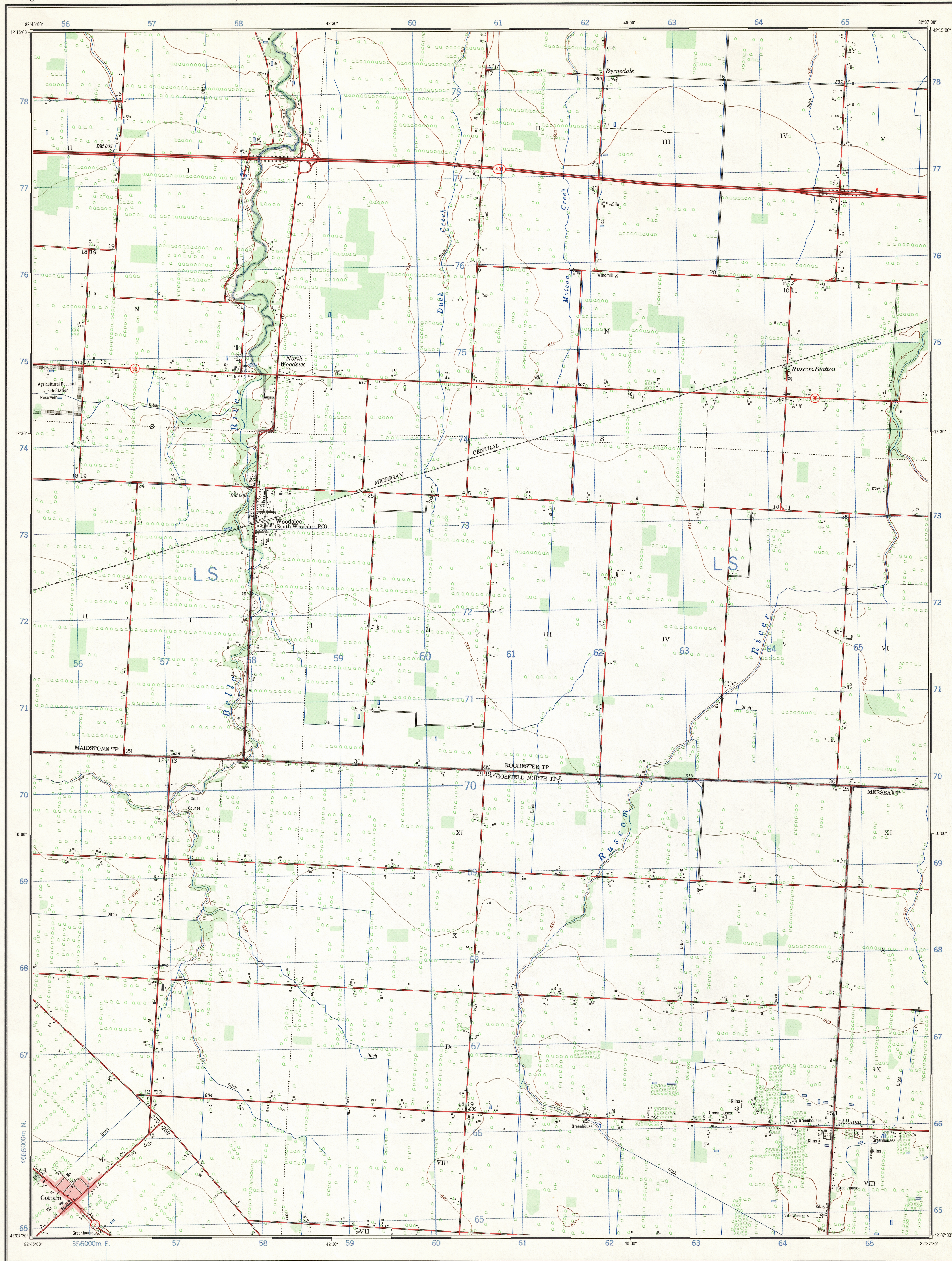
Use diagram only to obtain numerical values.
APPROXIMATE MEAN DECLINATION 1967
FOR CENTRE OF MAP
Annual change increasing 2.1"

ONE THOUSAND METRE
UNIVERSAL TRANSVERSE MERCATOR GRID
ZONE 17

GRID ZONE
DESIGNATION 17T
100,000 M. SQUARE IDENTIFICATION
L S

EXAMPLE OF METHOD USED
TO GIVE A REFERENCE TO NEAREST 100 METRES
THE FOLLOWING GRID REFERENCE IS A SAMPLE ONLY
AND DOES NOT REFER TO A POINT ON THIS MAP

REFERENCE POINT CHURCH (as above)
EASTING: Read number on grid line
immediately to left of point
Estimate tenths of a square from
this line eastward to point
NORTHING: Read number on grid line
immediately below point
Estimate tenths of a square from
this line northward to point
EXAMPLE MILITARY GRID REFERENCE 975984
Nearest similar grid reference 100,000 metres (about 63 miles)



Produced by the SURVEYS AND MAPPING BRANCH,
DEPARTMENT OF ENERGY, MINES AND RESOURCES.
Information depicted current as of 1965. Printed 1969.

Copies may be obtained from the Map Distribution Office,
Department of Energy, Mines and Resources, Ottawa.

WOODSLEE

ESSEX COUNTY
ONTARIO

Scale 1:25,000 Échelle

Miles 1 0 1
Metres 1000 500 0 500 1000
Yards 1000 500 0 500 1000

CONTOUR INTERVAL 10 FEET
Elevations in Feet above Mean Sea Level
North American Datum 1927
Transverse Mercator Projection

ÉQUIDISTANCE DES COURBES 10 PIEDS
Élevations en pieds au-dessus du niveau moyen de la mer
Niveau de référence nord-américain 1927
Projection Transverse de Mercator

Building Bâtiment Church Église
School École Post Office Bureau de poste
Cemetery Cimetière Navigation Light Feu de navigation
Rock, bare or wash Roche, nue ou à fleur d'eau
Power transmission line Ligne de transport d'énergie
River with bridge Rivière avec pont
Rapid, Falls, large small Rapides, Chutes, grands, petits
Lake intermittent, indefinite Lac intermittent, rive imprécise
Marsh or Swamp Marais ou marécage
Depression contours Courbes de cuvette
Trees Arbres
Woods Bois
Vineyard, Orchard Vignoble, Vergier

TABLEAU D'ASSEMBLAGE DU SYSTÈME NATIONAL
DE RÉFÉRENCE CARTOGRAPHIQUE
42°22'30" 82°32'30" 42°22'30"
40 J/2c 40 J/2g 40 J/2d
40 J/2i 40 J/2j
40 J/2e 40 J/2f 40 J/2h
42°00'00" 82°00'00" 42°00'00"
INDEX TO ADDING MAPS OF
THE NATIONAL TOPOGRAPHIC SYSTEM

WOODSLEE
40 J/2g
EDITION 1