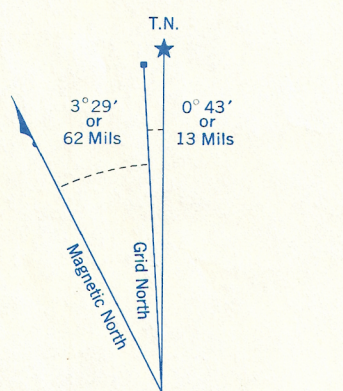


Refer to
this map as:
40 J/8a & 40 J/1h
EDITION 1 MCE
SERIES A 851

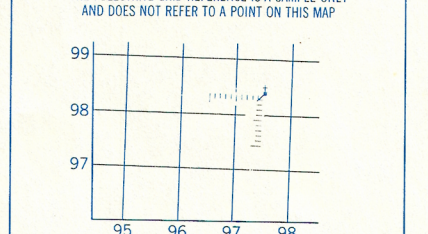
CONVERSION SCALE FOR ELEVATIONS
Feet
Meters



ONE THOUSAND METRE
UNIVERSAL TRANSVERSE MERCATOR GRID
ZONE 17

GRID ZONE DESIGNATION	100,000 M. SQUARE IDENTIFICATION
17 T	MS

EXAMPLE OF METHOD USED
TO GIVE A REFERENCE TO NEAREST 100 METRES
THE FOLLOWING GRID REFERENCE IS A SAMPLE ONLY
AND DOES NOT REFER TO A POINT ON THIS MAP



REFERENCE POINT	CHURCH (as above)
EASTING: Road number on grid line immediately to left of point. Estimate tenths of a square from this line eastward to point.	97 5 975
NORTHING: Road number on grid line immediately below point. Estimate tenths of a square from this line northward to point.	98 4 984

EXAMPLE MILITARY GRID REFERENCE 975984
Nearest similar grid reference 100,000 metres (about 62 miles)

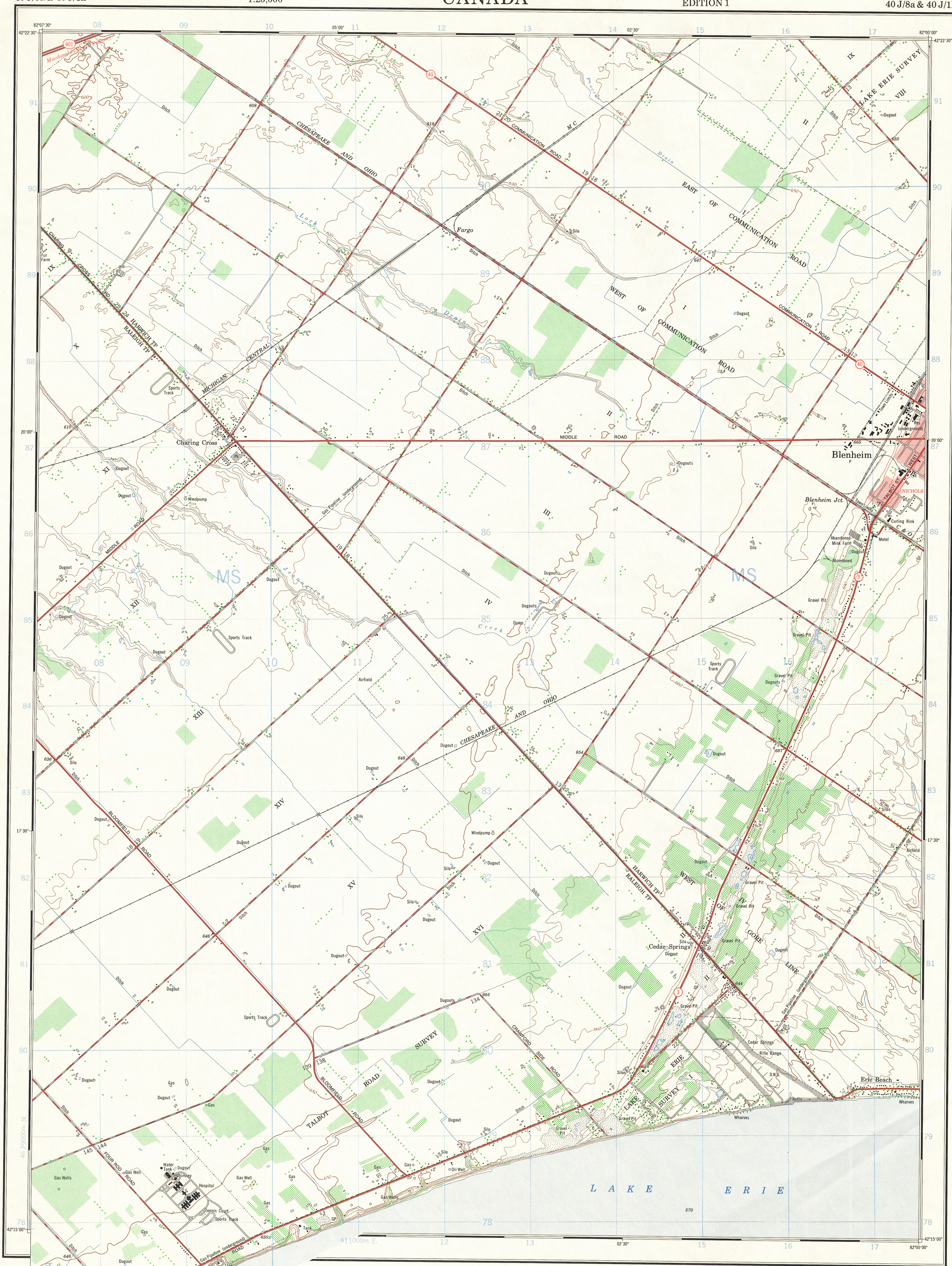
TABLEAU D'ASSEMBLAGE DU SYSTÈME NATIONAL DE RÉFÉRENCE CARTOGRAPHIQUE

40 J/8g	40 J/8h	40 J/8i
40 J/8j	40 J/8a	40 J/8d
40 J/8k	40 J/8b	40 J/8e

INDEX TO ADJOINING MAPS OF
THE NATIONAL TOPOGRAPHIC SYSTEM

CHARING CROSS
40 J/8a & 40 J/1h
EDITION 1

This document was produced
by scanning the original publication.
Ce document est le produit d'une
numérisation par balayage
de la publication originale.



Produced by the SURVEYS AND MAPPING BRANCH,
DEPARTMENT OF ENERGY, MINES AND RESOURCES.
Information depicted current as of 1971. Printed 1974.

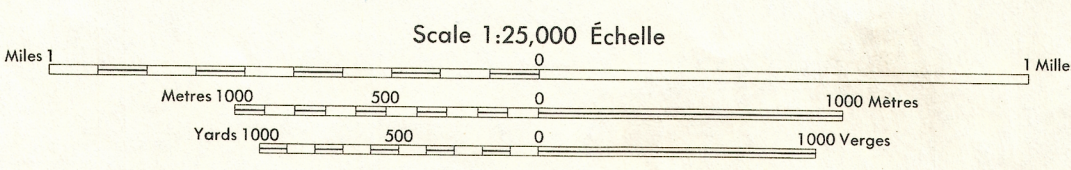
Copies may be obtained from the Canada Map Office,
Department of Energy, Mines and Resources, Ottawa,
or your nearest map dealer.

© Canada Copyrights Reserved 1974.

Some names on this map are not yet official.
Corrections or additions are invited by the
Surveys and Mapping Branch.

CHARING CROSS

KENT COUNTY
ONTARIO



CONTOUR INTERVAL 10 FEET
Elevations in feet above Mean Sea Level
North American Datum 1927
Transverse Mercator Projection

Communities within cities and towns are named in red.
Les communautés à l'intérieur des cités et villes sont désignées en rouge.

Établi par la DIRECTION DES LEVÉS ET DE LA CARTOGRAPHIE,
MINISTÈRE DE L'ÉNERGIE, DES MINES ET DES RESSOURCES.

Ces cartes sont en vente au Bureau des Cartes du Canada,
ministère de l'Énergie, des Mines et des Ressources, Ottawa,
ou chez le vendeur le plus près.

© Canada 1974. tous droits réservés.

Certain noms inscrits sur cette carte ne sont
pas encore officiels. La Direction des levés et
de la cartographie saurait gré au public de lui
signaler corrections et additions.

Building	Bâtiment	Church	Église
School	École	Post Office	Bureau de poste
Cemetery	Cimetière	Navigation Light	Feu de navigation
Rock, bare or awash	Roche, nue ou à fleur d'eau	Power transmission line	Ligne de transport d'énergie
River with bridge	Rivière avec pont	Rapids, falls, large, small	Rapides, Chutes, grands, petits
Lake intermittent, indefinite	Lac intermittent, rive imprécise	Marsh or Swamp	Marais ou marécage
Depression contours	Courbes de cuvette	Arrows	Bois
Woods	Bois	Vineyard, Orchard	Vignoble, Verger