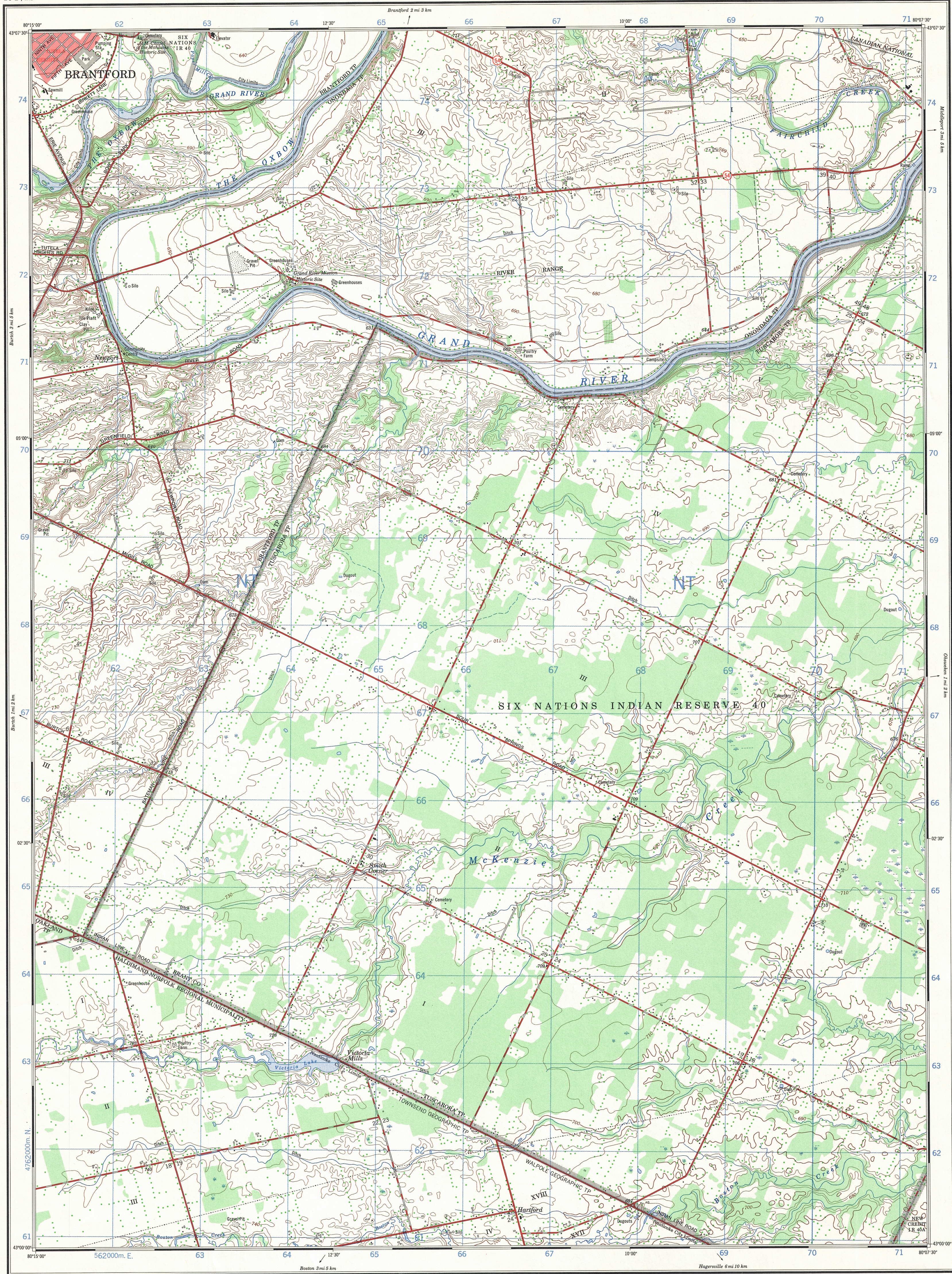
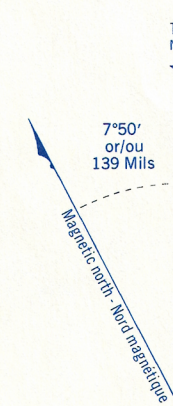


Military users, refer to this map as: Réf. de cette carte pour usage militaire.	SERIES A 851 MAP 40 P/1b EDITION 2 MCE	SÉRIE CARTE ÉDITION
--	--	---------------------------



CONVERSION SCALE FOR ELEVATIONS
ÉCHELLE DE CONVERSION DES ÉLEVATIONS

Feet 0 100 200 300 400 500 600 700 800 900 1000
Mètres 0 30 60 90 120 150 180 210 240 270 300



Use diagram only to obtain numerical values
APPROXIMATE MEAN DECLINATION 1975
FOR CENTRE OF MAP
Annual change increasing 1.5'
N'utiliser le diagramme que pour obtenir les valeurs numériques
DÉCLINAISON MOYENNE APPROXIMATIVE
AU CENTRE DE LA CARTE EN 1975
Variation annuelle croissante 1.5'

ONE THOUSAND METRE
UNIVERSAL TRANSVERSE MERCATOR GRID
ZONE 17
QUADRILLAGE DE MILLE MÈTRES
TRANSVERSE UNIVERSEL DE MERCATOR

GRID ZONE DESIGNATION DÉSIGNATION DE LA ZONE DU QUADRILLAGE:	100,000 M. SQUARE IDENTIFICATION IDENTIFICATION DU CARRÉ DE 100,000 M.
17T	NT

EXAMPLE OF METHOD USED TO GIVE A REFERENCE TO NEAREST 100 METRES EXEMPLE DE LA MÉTHODE EMPLOYÉE POUR FAIRE DES RÉFÉRENCES À 100 MÈTRES PRÈS	
99 98 97 96 95	97 96 95

REFERENCE POINT POINT DE RÉFÉRENCE	CHURCH - ÉGLISE (as above) (ci-dessus)
EASTING: Road number on grid line immediately to left of point LONGITUDE EST: Note the figure of the line of the quadrangle immediately to the left of the point. Estimate tenths of a square from this line eastward to point. Estimer le nombre de dixièmes du carré entre cette ligne et le repère en direction est:	97 96 95 94 93 92 91 90 89 88 87 86 85 84 83 82 81 80 79 78 77 76 75 74 73 72 71 70 69 68 67 66 65 64 63 62 61 60 59 58 57 56 55 54 53 52 51 50 49 48 47 46 45 44 43 42 41 40 39 38 37 36 35 34 33 32 31 30 29 28 27 26 25 24 23 22 21 20 19 18 17 16 15 14 13 12 11 10 9 8 7 6 5 4 3 2 1 0 -1 -2 -3 -4 -5 -6 -7 -8 -9 -10 -11 -12 -13 -14 -15 -16 -17 -18 -19 -20 -21 -22 -23 -24 -25 -26 -27 -28 -29 -30 -31 -32 -33 -34 -35 -36 -37 -38 -39 -40 -41 -42 -43 -44 -45 -46 -47 -48 -49 -50 -51 -52 -53 -54 -55 -56 -57 -58 -59 -60 -61 -62 -63 -64 -65 -66 -67 -68 -69 -70 -71 -72 -73 -74 -75 -76 -77 -78 -79 -80 -81 -82 -83 -84 -85 -86 -87 -88 -89 -90 -91 -92 -93 -94 -95 -96 -97 -98 -99 -100 -101 -102 -103 -104 -105 -106 -107 -108 -109 -110 -111 -112 -113 -114 -115 -116 -117 -118 -119 -120 -121 -122 -123 -124 -125 -126 -127 -128 -129 -130 -131 -132 -133 -134 -135 -136 -137 -138 -139 -140 -141 -142 -143 -144 -145 -146 -147 -148 -149 -150 -151 -152 -153 -154 -155 -156 -157 -158 -159 -160 -161 -162 -163 -164 -165 -166 -167 -168 -169 -170 -171 -172 -173 -174 -175 -176 -177 -178 -179 -180 -181 -182 -183 -184 -185 -186 -187 -188 -189 -190 -191 -192 -193 -194 -195 -196 -197 -198 -199 -200 -201 -202 -203 -204 -205 -206 -207 -208 -209 -210 -211 -212 -213 -214 -215 -216 -217 -218 -219 -220 -221 -222 -223 -224 -225 -226 -227 -228 -229 -230 -231 -232 -233 -234 -235 -236 -237 -238 -239 -240 -241 -242 -243 -244 -245 -246 -247 -248 -249 -250 -251 -252 -253 -254 -255 -256 -257 -258 -259 -260 -261 -262 -263 -264 -265 -266 -267 -268 -269 -270 -271 -272 -273 -274 -275 -276 -277 -278 -279 -280 -281 -282 -283 -284 -285 -286 -287 -288 -289 -290 -291 -292 -293 -294 -295 -296 -297 -298 -299 -300 -301 -302 -303 -304 -305 -306 -307 -308 -309 -310 -311 -312 -313 -314 -315 -316 -317 -318 -319 -320 -321 -322 -323 -324 -325 -326 -327 -328 -329 -330 -331 -332 -333 -334 -335 -336 -337 -338 -339 -340 -341 -342 -343 -344 -345 -346 -347 -348 -349 -350 -351 -352 -353 -354 -355 -356 -357 -358 -359 -360 -361 -362 -363 -364 -365 -366 -367 -368 -369 -370 -371 -372 -373 -374 -375 -376 -377 -378 -379 -380 -381 -382 -383 -384 -385 -386 -387 -388 -389 -390 -391 -392 -393 -394 -395 -396 -397 -398 -399 -400 -401 -402 -403 -404 -405 -406 -407 -408 -409 -410 -411 -412 -413 -414 -415 -416 -417 -418 -419 -420 -421 -422 -423 -424 -425 -426 -427 -428 -429 -430 -431 -432 -433 -434 -435 -436 -437 -438 -439 -440 -441 -442 -443 -444 -445 -446 -447 -448 -449 -450 -451 -452 -453 -454 -455 -456 -457 -458 -459 -460 -461 -462 -463 -464 -465 -466 -467 -468 -469 -470 -471 -472 -473 -474 -475 -476 -477 -478 -479 -480 -481 -482 -483 -484 -485 -486 -487 -488 -489 -490 -491 -492 -493 -494 -495 -496 -497 -498 -499 -500 -501 -502 -503 -504 -505 -506 -507 -508 -509 -510 -511 -512 -513 -514 -515 -516 -517 -518 -519 -520 -521 -522 -523 -524 -525 -526 -527 -528 -529 -530 -531 -532 -533 -534 -535 -536 -537 -538 -539 -540 -541 -542 -543 -544 -545 -546 -547 -548 -549 -550 -551 -552 -553 -554 -555 -556 -557 -558 -559 -560 -561 -562 -563 -564 -565 -566 -567 -568 -569 -570 -571 -572 -573 -574 -575 -576 -577 -578 -579 -580 -581 -582 -583 -584 -585 -586 -587 -588 -589 -590 -591 -592 -593 -594 -595 -596 -597 -598 -599 -600 -601 -602 -603 -604 -605 -606 -607 -608 -609 -610 -611 -612 -613 -614 -615 -616 -617 -618 -619 -620 -621 -622 -623 -624 -625 -626 -627 -628 -629 -630 -631 -632 -633 -634 -635 -636 -637 -638 -639 -640 -641 -642 -643 -644 -645 -646 -647 -648 -649 -650 -651 -652 -653 -654 -655 -656 -657 -658 -659 -660 -661 -662 -663 -664 -665 -666 -667 -668 -669 -670 -671 -672 -673 -674 -675 -676 -677 -678 -679 -680 -681 -682 -683 -684 -685 -686 -687 -688 -689 -690 -691 -692 -693 -694 -695 -696 -697 -698 -699 -700 -701 -702 -703 -704 -705 -706 -707 -708 -709 -710 -711 -712 -713 -714 -715 -716 -717 -718 -719 -720 -721 -722 -723 -724 -725 -726 -727 -728 -729 -730 -731 -732 -733 -734 -735 -736 -737 -738 -739 -740 -741 -742 -743 -744 -745 -746 -747 -748 -749 -750 -751 -752 -753 -754 -755 -756 -757 -758 -759 -760 -761 -762 -763 -764 -765 -766 -767 -768 -769 -770 -771 -772 -773 -774 -775 -776 -777 -778 -779 -780 -781 -782 -783 -784 -785 -786 -787 -788 -789 -790 -791 -792 -793 -794 -795 -796 -797 -798 -799 -800 -801 -802 -803 -804 -805 -806 -807 -808 -809 -810 -811 -812 -813 -814 -815 -816 -817 -818 -819 -820 -821 -822 -823 -824 -825 -826 -827 -828 -829 -830 -831 -832 -833 -834 -835 -836 -837 -838 -839 -840 -841 -842 -843 -844 -845 -846 -847 -848 -849 -850 -851 -852 -853 -854 -855 -856 -857 -858 -859 -860 -861 -862 -863 -864 -865 -866 -867 -868 -869 -870 -871 -872 -873 -874 -875 -876 -877 -878 -879 -880 -881 -882 -883 -884 -885 -886 -887 -888 -889 -890 -891 -892 -893 -894 -895 -896 -897 -898 -899 -900 -901 -902 -903 -904 -905 -906 -907 -908 -909 -910 -911 -912 -913 -914 -915 -916 -917 -918 -919 -920 -921 -922 -923 -924 -925 -926 -927 -928 -929 -930 -931 -932 -933 -934 -935 -936 -937 -938 -939 -940 -941 -942 -943 -944 -945 -946 -947 -948 -949 -950 -951 -952 -953 -954 -955 -956 -957 -958 -959 -960 -961 -962 -963 -964 -965 -966 -967 -968 -969 -970 -971 -972 -973 -974 -975 -976 -977 -978 -979 -980 -981 -982 -983 -984 -985 -986 -987 -988 -989 -990 -991 -992 -993 -994 -995 -996 -997 -998 -999 -1000 -1001 -1002 -1003 -1004 -1005 -1006 -1007 -1008 -1009 -1010 -1011 -1012 -1013 -1014 -1015 -1016 -1017 -1018 -1019 -1020 -1021 -1022 -1023 -1024 -1025 -1026 -1027 -1028 -1029 -1030 -1031 -1032 -1033 -1034 -1035 -1036 -1037 -1038 -1039 -1040 -1041 -1042 -1043 -1044 -1045 -1046 -1047 -1048 -1049 -1050 -1051 -1052 -1053 -1054 -1055 -1056 -1057 -1058 -1059 -1060 -1061 -1062 -1063 -1064 -1065 -1066 -1067 -1068 -1069 -1070 -1071 -1072 -1073 -1074 -1075 -1076 -1077 -1078 -1079 -1080 -1081 -1082 -1083 -1084 -1085 -1086 -1087 -1088 -1089 -1090 -1091 -1092 -1093 -1094 -1095 -1096 -1097 -1098 -1099 -1100 -1101 -1102 -1103 -1104 -1105 -1106 -1107 -1108 -1109 -1110 -1111 -1112 -1113 -1114 -1115 -1116 -1117 -1118 -1119 -1120 -1121 -1122 -1123 -1124 -1125 -1126 -1127 -1128 -1129 -1130 -1131 -1132 -1133 -1134 -1135 -1136 -1137 -1138 -1139 -1140 -1141 -1142 -1143 -1144 -1145 -1146 -1147 -1148 -1149 -1150 -1151 -1152 -1153 -1154 -1155 -1156 -1157 -1158 -1159 -1160 -1161 -1162 -1163 -1164 -1165 -1166 -1167 -1168 -1169 -1170 -1171 -1172 -1173 -1174 -1175 -1176 -1177 -1178 -1179 -1180 -1181 -1182 -1183 -1184 -1185 -1186 -1187 -1188 -1189 -1190 -1191 -1192 -1193 -1194 -1195 -1196 -1197 -1198 -1199 -1200 -1201 -1202 -1203 -1204 -1205 -1206 -1207 -1208 -1209 -1210 -1211 -1212 -1213 -1214 -1215 -1216 -1217 -1218 -1219 -1220 -1221 -1222 -1223 -1224 -1225 -1226 -1227 -1228 -1229 -1230 -1231 -1232 -1233 -1234 -1235 -1236 -1237 -1238 -1239 -1240 -1241 -1242 -1243 -1244 -1245 -1246 -1247 -1248 -1249 -1250 -1251 -1252 -1253 -1254 -1255 -1256 -1257 -1258 -1259 -1260 -1261 -1262 -1263 -1264 -1265 -1266 -1267 -1268 -1269 -1270 -1271 -1272 -1273 -1274 -1275 -1276 -1277 -1278 -1279 -1280 -1281 -1282 -1283 -1284 -1285 -1286 -1287 -1288 -1289 -1290 -1291 -1292 -1293 -1294 -1295 -1296 -1297 -1298 -1299 -1300 -1301 -1302 -1303 -1304 -1305 -1306 -1307 -1308 -1309 -1310 -1311 -1312 -1313 -1314 -1315 -1316 -1317 -1318 -1319 -1320 -1321 -1322 -1323 -1324 -1325 -1326 -1327 -1328 -1329 -1330 -1331 -1332 -1333 -1334 -1335 -1336 -1337 -1338 -1339 -1340 -1341 -1342 -1343 -1344 -1345 -1346 -1347 -1348 -1349 -1350 -1351 -1352 -1353 -1354 -1355 -1356 -1357 -1358 -1359 -1360 -1361 -1362 -1363 -1364 -1365 -1366 -1367 -1368 -1369 -1370 -1371 -1372 -1373 -1374 -1375 -1376 -1377 -1378 -1379 -1380 -1381 -1382 -1383 -1384 -1385 -1386 -1387 -1388 -1389 -1390 -1391 -1392 -1393 -1394 -1395 -1396 -1397 -1398 -1399 -1400 -1401 -1402 -1403 -1404 -1405 -1406 -1407 -1408 -1409 -1410 -1411 -1412 -1413 -1414 -1415 -1416 -1417 -1418 -1419 -1420 -1421 -1422 -1423 -1424 -1425 -1426 -1427 -1428 -1429 -1430 -1431 -1432 -1433 -1434 -1435 -1436 -1437 -1438 -1439 -1440 -1441 -1442 -1443 -1444 -1445 -1446 -1447 -1448 -1449 -1450 -1451 -1452 -1453 -1454 -1455 -1456 -1457 -1458 -1459 -1460 -1461 -1462 -1463 -1464 -1465 -1466 -1467 -1468 -1469 -1470 -1471 -1472 -1473 -1474 -1475 -1476 -1477 -1478 -1479 -1480 -1481 -1482 -1483 -1484 -1485 -1486 -1487 -1488 -1489 -1490 -1491 -1492 -1493 -1494 -1495 -1496 -1497 -1498 -1499 -1500 -1501 -1502 -1503 -1504 -1505 -1506 -1507 -1508 -1509 -1510 -1511 -1512 -1513 -1514 -1515 -1516 -1517 -1518 -1519 -1520 -1521 -1522 -1523 -1524 -1525 -1526 -1527 -1528 -1529 -1530 -1531 -1532 -1533 -1534 -1535 -1536 -1537 -1538 -1539 -1540 -1541 -1542 -1543 -1544 -1545 -1546 -1547 -1548 -1549 -1550 -1551 -1552 -1553 -1554 -1555 -1556 -1557 -1558 -1559 -1560 -1561 -1562 -1563 -1564 -1565 -1566 -1567 -1568 -1569 -1570 -1571 -1572 -1573 -1574 -1575 -1576 -1577 -1578 -1579 -1580 -1581 -1582 -1583 -1584 -1585 -1586 -1587 -1588 -1589 -1590 -1591 -1592 -1593 -1594 -1595 -1596 -1597 -1598 -1599 -1600 -1601 -1602 -1603 -1604 -1605 -1606 -1607 -1608 -1609 -1610 -1611 -1612 -1613 -1614 -1615 -1616 -1617 -1618 -1619 -1620 -1621 -1622 -1623 -1624 -1625 -1626 -1627 -1628 -1629 -1630 -1631 -1632 -1633 -1634 -1635 -1636 -1637 -1638 -1639 -1640 -1641 -1642 -1643 -1644 -1645 -1646 -1647 -1648 -1649 -1650 -1651 -1652 -1653 -1654 -1655 -1656 -1657 -1658 -1659 -1660 -1661 -1662 -1663 -1664 -1665 -1666 -1667 -1668 -1669 -1670 -1671 -1672 -1673 -1674 -1675 -1676 -1677 -1678 -1679 -1680 -1681 -1682 -1683 -1684 -1685 -1686 -1687 -1688 -1689 -1690 -1691 -1692 -1693 -169