

Ce document est le produit d'une numérisation par balayage de la publication originale.

This document was produced by scanning the original publication.

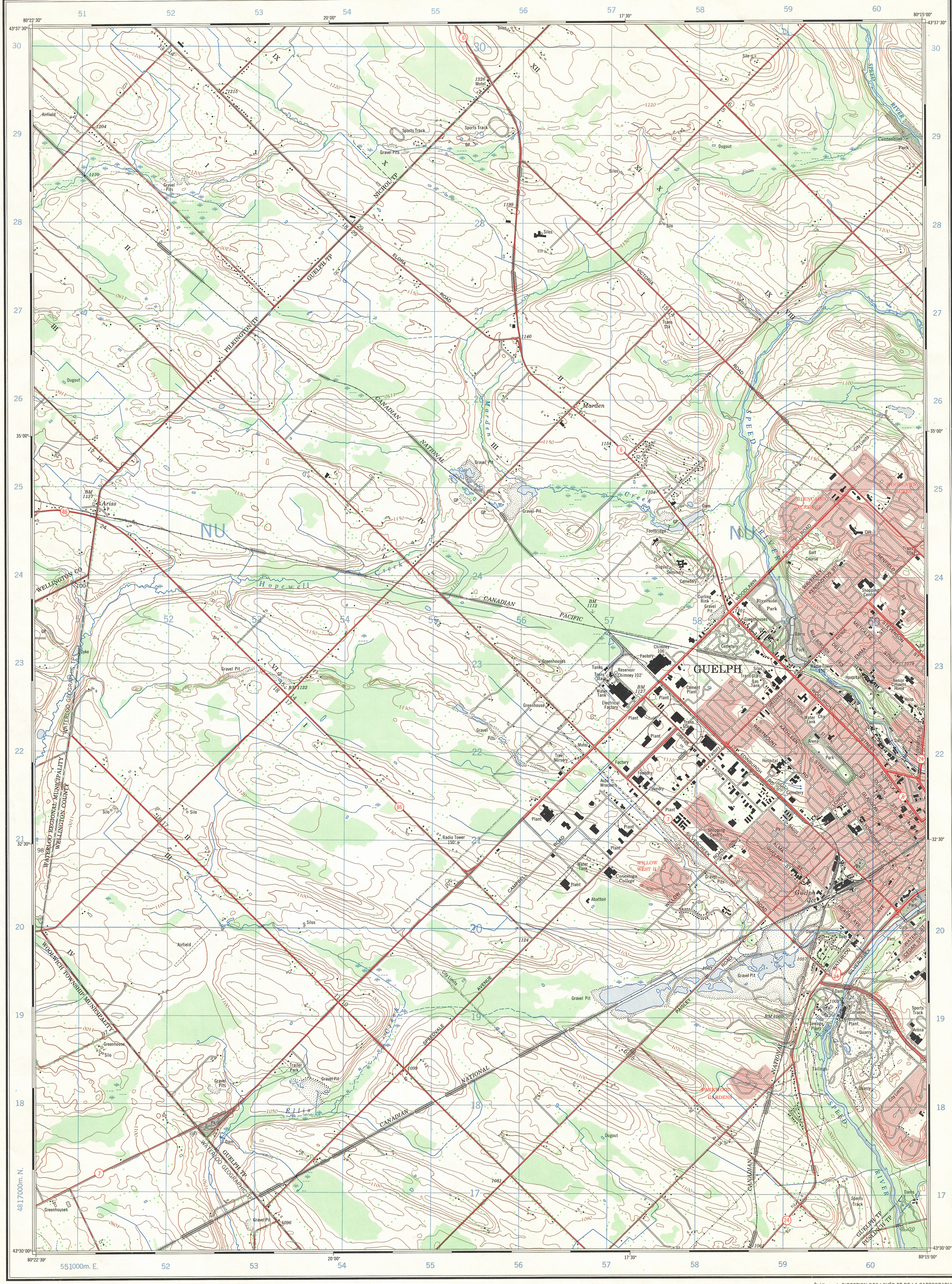
40 P/9c

1:25,000

CANADA

EDITION 2

40 P/9c

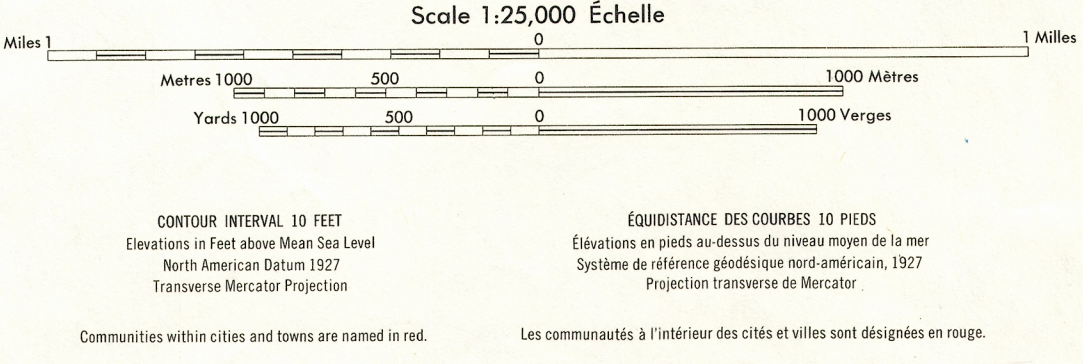


Produced by the SURVEYS AND MAPPING BRANCH, DEPARTMENT OF ENERGY, MINES AND RESOURCES. Updated from aerial photographs taken in 1972. Culture check 1974. Printed 1975.

Copies may be obtained from the Canada Map Office, Department of Energy, Mines and Resources, Ottawa, or your nearest map dealer.

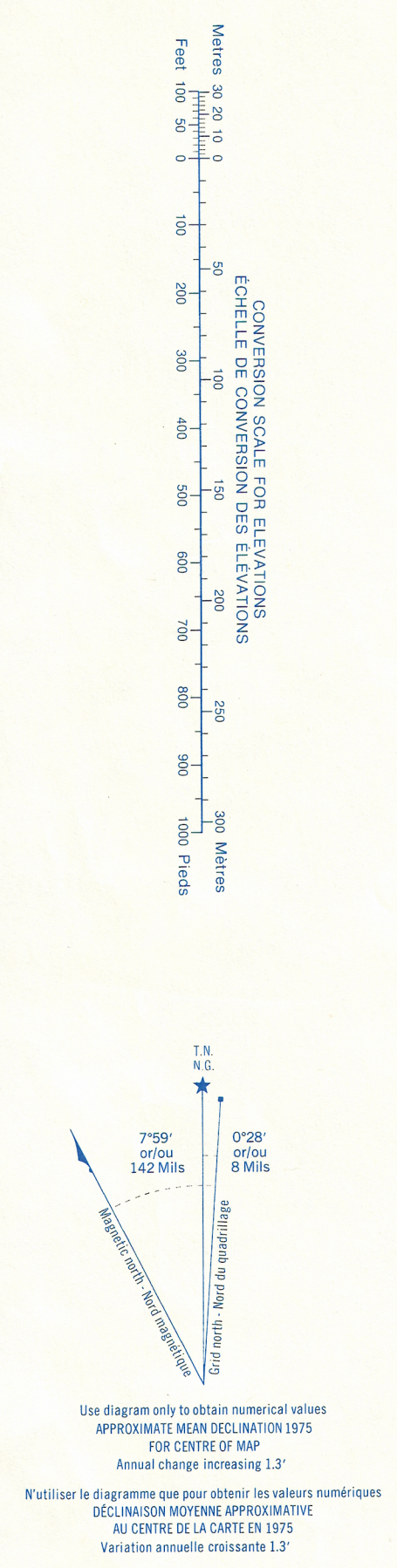
© Canada Copyrights Reserved 1975

# GUELPH-ARISS ONTARIO



Building.....	Bâtiment.....	Church.....	Église.....
School.....	École.....	Post Office.....	Bureau de poste.....
Cemetery.....	Cimetière.....	Navigation Light.....	Feu de navigation.....
Rock, bare or awash.....	Roche, nue ou à fleur d'eau.....		
Power transmission line.....	Ligne de transport d'énergie.....		
River with bridge.....	Rivière avec pont.....		
Rapids, Falls, large, small.....	Rapides, Chutes, grands, petits.....		
Lake intermittent, indefinite.....	Lac intermittent, indéfini.....		
Marsh or Swamp.....	Marais ou marécage.....		
Depression contours.....	Courbes de cuvette.....		
Trees.....	Arbres.....		
Woods.....	Bois.....		
Vineyard, Orchard.....	Vignoble, Verger.....		

Military users, refer to this map as: SÉRIE A 851 SÉRIE  
Référence de cette carte pour usage militaire: MAP 40 P/9c CARTE  
EDITION 2 MCE ÉDITION



ONE THOUSAND METRE  
UNIVERSAL TRANSVERSE MERCATOR GRID  
ZONE 17  
QUADRILLAGE DE MILLE MÈTRES  
TRANSVERSE UNIVERSEL DE MERCATOR

GRID ZONE DESIGNATION DESIGNATION DE LA ZONE DU QUADRILLAGE:	100,000 M. SQUARE IDENTIFICATION IDENTIFICATION DU CARRÉ DE 100,000 M.
17T	NU

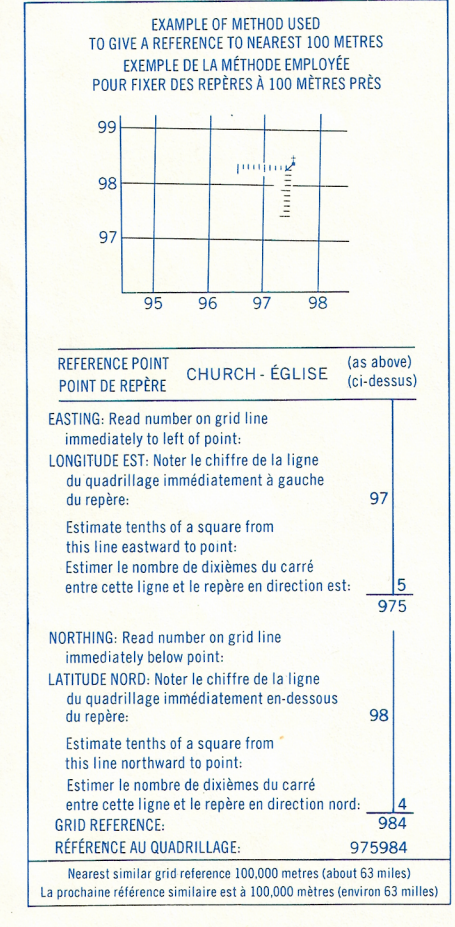


TABLEAU D'ASSEMBLAGE DU SYSTÈME NATIONAL DE RÉFÉRENCE CARTOGRAPHIQUE

43°45'00"	80°15'00"	80°22'30"	43°45'00"
40 P/9c	40 P/9c	40 P/9c	
40 P/9c	40 P/9c	40 P/9c	
40 P/9c	40 P/9c	40 P/9c	
43°22'30"	80°15'00"	80°22'30"	43°22'30"

INDEX TO ADJOINING MAPS OF THE NATIONAL TOPOGRAPHIC SYSTEM

GUELPH-ARISS  
40 P/9c  
EDITION 2