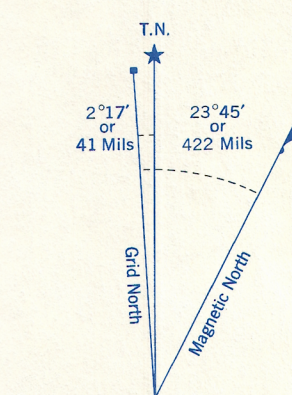


Refer to
this map as:
82P/4d
EDITION 2 MCE
SERIES A 841

CONVERSION SCALE FOR ELEVATIONS
100 200 300 400 500 600 700 800 900 1000
Feet
30 60 90 120 150 180 210 240 270 300
Metres

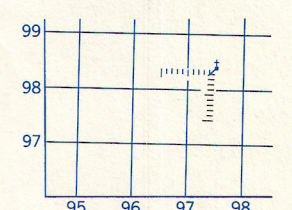


Use diagram only to obtain numerical values.
APPROXIMATE MEAN DECLINATION 1969
FOR CENTRE OF MAP
Annual change decreasing 3.4"

ONE THOUSAND METRE
UNIVERSAL TRANSVERSE MERCATOR GRID
ZONE 12

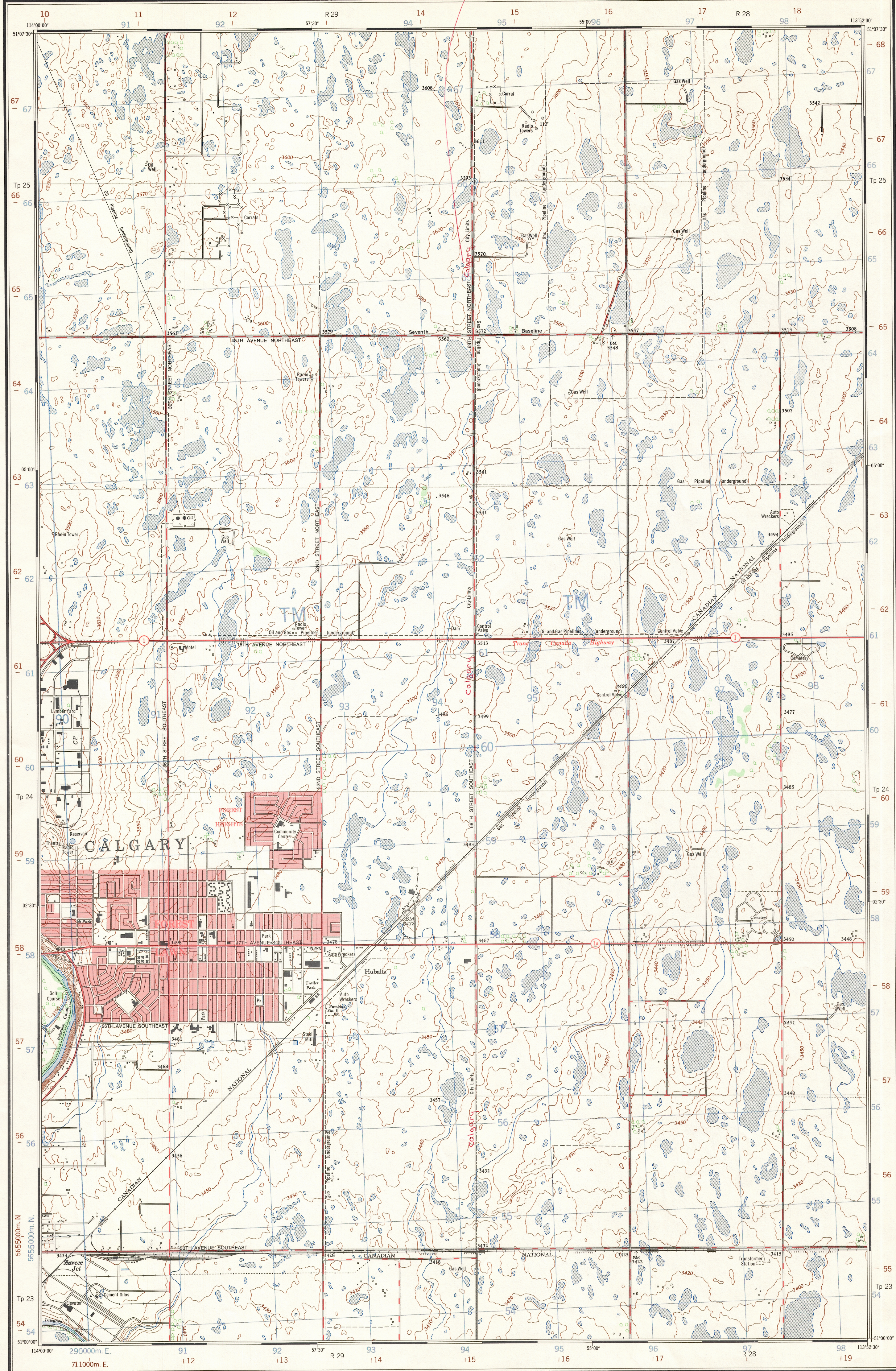
GRID ZONE DESIGNATION	100,000 M. SQUARE IDENTIFICATION
12U	TM

TO GIVE A REFERENCE TO NEAREST 100 METRES
THE FOLLOWING GRID REFERENCE IS A SAMPLE ONLY
AND DOES NOT REFER TO A POINT ON THIS MAP



REFERENCE POINT CHURCH (as above)
EASTING: Read number on grid line
immediately to left of point
Estimate tenths of a square from
this line eastward to point
NORTHING: Read number on grid line
immediately below point
Estimate tenths of a square from
this line northward to point
EXAMPLE MILITARY GRID REFERENCE 975984
Nearest similar grid reference 100,000 metres (about 53 miles)

BROWN NUMBERED TICKS INDICATE
THE 1000 METRE U.T.M. GRID
ZONE 11

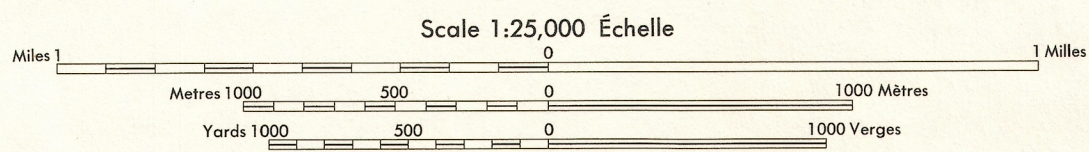


Produced by the SURVEYS AND MAPPING BRANCH,
DEPARTMENT OF ENERGY, MINES AND RESOURCES.
Information current as of 1968. Printed 1970.

Copies may be obtained from the Map Distribution Office,
Department of Energy, Mines and Resources, Ottawa.

FOREST LAWN ALBERTA

WEST OF FOURTH MERIDIAN - OUEST DU QUATRIÈME MÉRIDIEN



CONTOUR INTERVAL 10 FEET
Elevations in Feet above Mean Sea Level
North American Datum 1927
Transverse Mercator Projection

EQUIDISTANCE DES COURBES 10 PIEDS
Élévations en pieds au-dessus du niveau moyen de la mer
Système de référence géodésique nord-américain 1927
Projection transverse de Mercator

Roads:	Routes:
hard surface, all weather.....	pavée, toute saison.....
hard surface, all weather.....	pavée, toute saison.....
loose or stabilized surface, all weather.....	gravier aggloméré, toute saison.....
loose surface, dry weather.....	de gravier, période sèche.....
cart track.....	de terre.....
trail or portage.....	sentier ou portage.....
Railway, normal gauge, single track.....	Chemin de fer, voie unique (écartement normal).....
Horizontal control point, with elevation.....	Point géodésique, avec cote.....
Bench mark, with elevation.....	Repère de nivellement, avec cote.....
Spot elevation, precise.....	Point coté, précis.....
Mine or open cut.....	Mine ou fosse à ciel ouvert.....

Building.....	Bâtiment.....
School.....	École.....
Cemetery.....	Cimetière.....
Rock, bare or wash.....	Roche, nue ou à fleur d'eau.....
Power transmission line.....	Ligne de transport d'énergie.....
River with bridge.....	Rivière avec pont.....
Rapids, Falls, large, small.....	Rapides, Chutes, grands, petits.....
Lake intermittent, indefinite.....	Lac intermittent, rive imprécise.....
Marsh or Swamp.....	Marais ou marécage.....
Depression contours.....	Courbes de cuvette.....
Trails.....	Arbres.....
Woods.....	Bos.....
Vineyard, Orchard.....	Vignoble, Verger.....

TABLEAU D'ASSEMBLAGE DU SYSTÈME NATIONAL
DE RÉFÉRENCE CARTOGRAPHIQUE

11°45'00"	11°45'00"	11°45'00"
82 Q/1h	82 P/4e	82 P/4f
82 Q/1a	82 P/4d	82 P/4c
82 U/1b	82 U/13e	82 U/13f
50°52'30"	50°52'30"	50°52'30"

INDEX TO ADJOINING MAPS OF
THE NATIONAL TOPOGRAPHIC SYSTEM