

BATTLE HARBOUR - CARTWRIGHT  
ELEVATIONS IN FEET

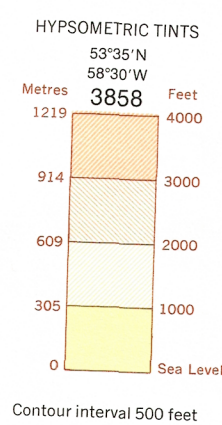
CANADA  
DEPARTMENT OF  
ENERGY, MINES AND RESOURCES  
SURVEYS AND MAPPING BRANCH  
(Joins Hamilton - Hopdale 13 N.E.)

Transverse Mercator Projection

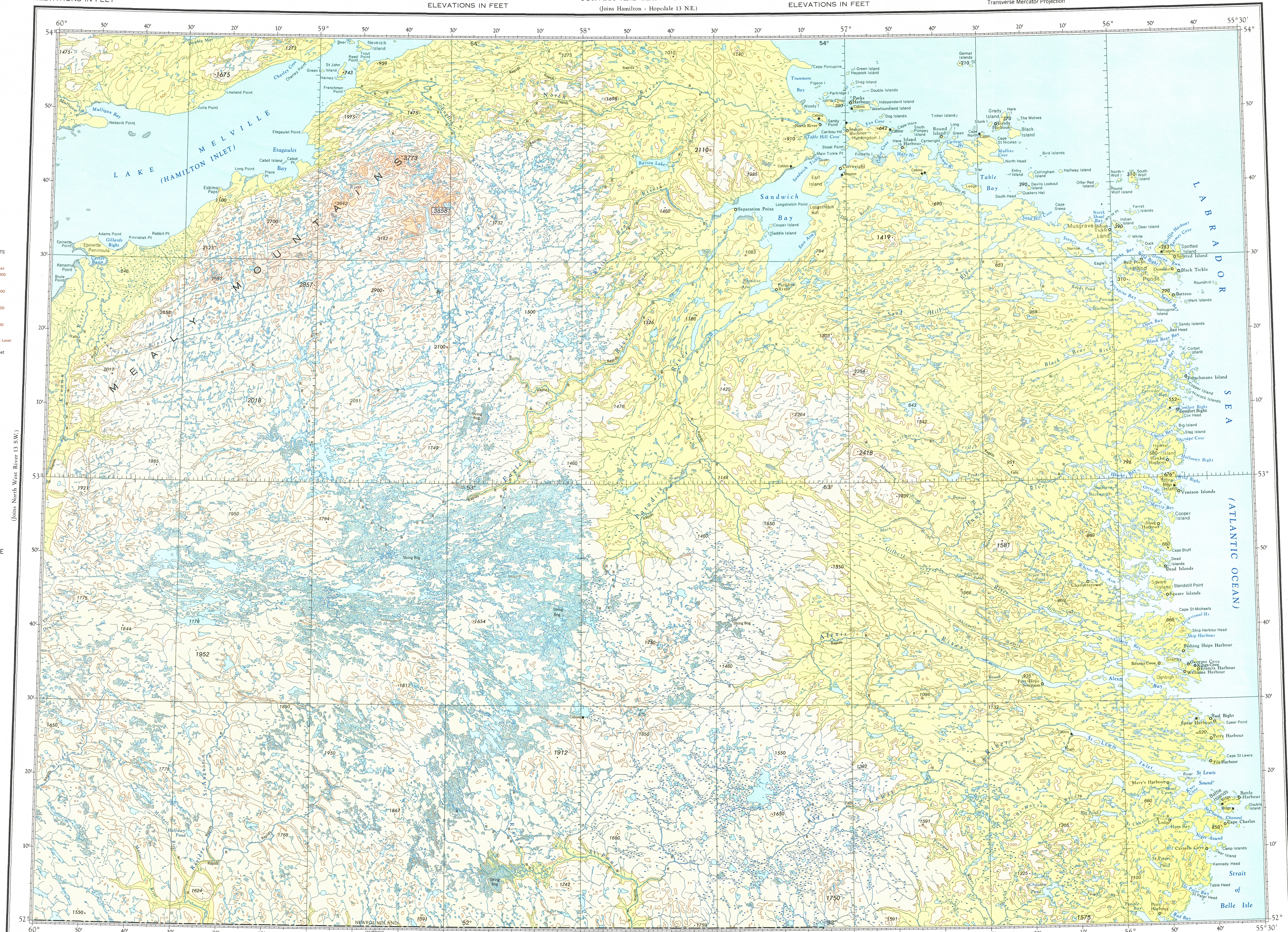
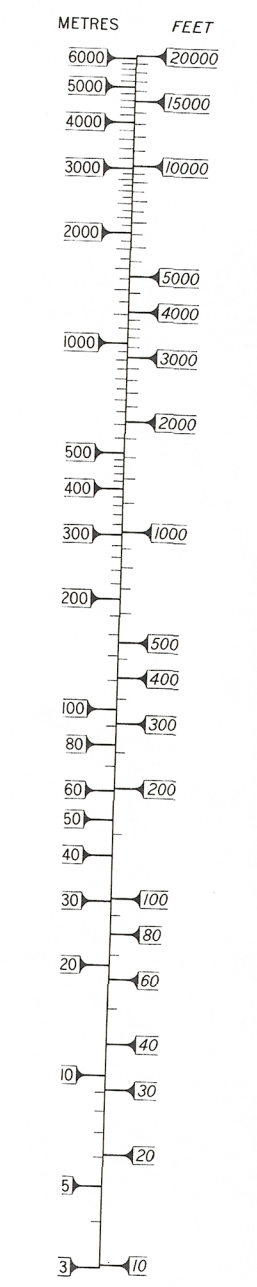
ELEVATIONS IN FEET

ELEVATIONS IN FEET

ELEVATIONS IN FEET



CONVERSION TABLE  
LOGARITHMIC SCALE



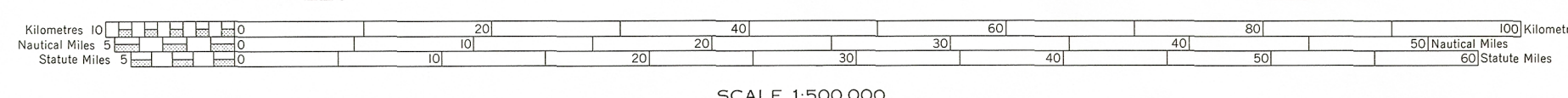
ELEVATIONS IN FEET  
Base Map, 6th Edition 1975

Produced by the Surveys and Mapping Branch,  
Department of Energy, Mines and Resources.  
© Canada Copyrights Reserved 1975

ELEVATIONS IN FEET

(Joins Harrington - Belle Isle 12 N.E.)

ELEVATIONS IN FEET



SCALE 1:500,000

Copies may be obtained from the Canada Map Office,  
Department of Energy, Mines and Resources, Canada,  
or your nearest map dealer.

ELEVATIONS IN FEET

BATTLE HARBOUR - CARTWRIGHT  
N.T.S. No. 13 S.E. and part of 3 S.W.