

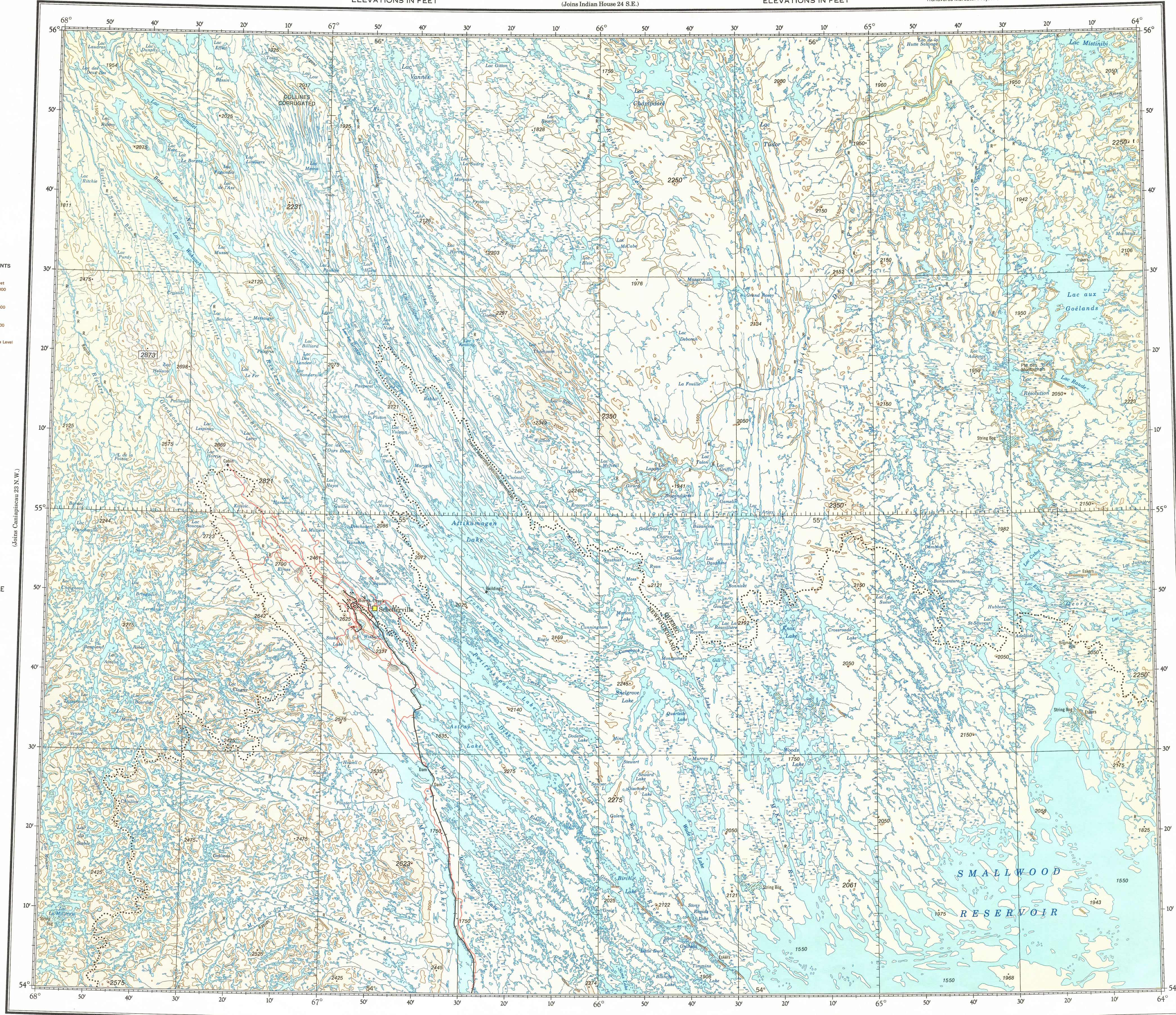
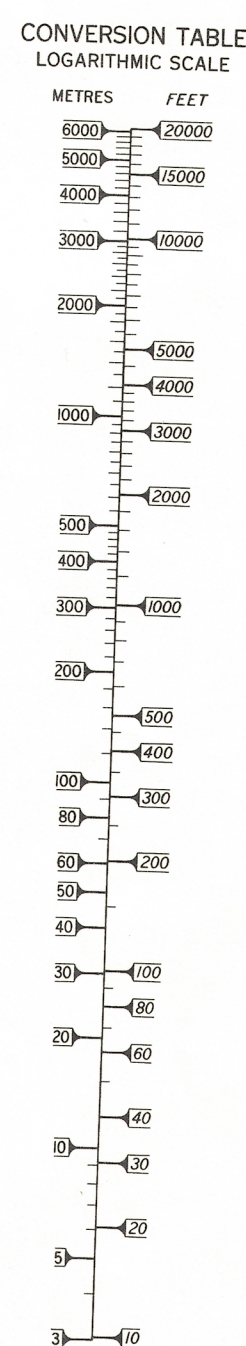
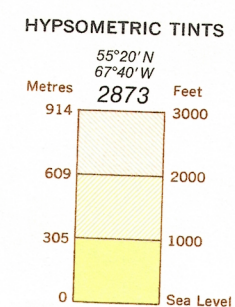
DYKE LAKE
ELEVATIONS IN FEET

CANADA
DEPARTMENT OF
ENERGY, MINES AND RESOURCES
SURVEYS AND MAPPING BRANCH
(Joins Indian House 24 S.E.)

ELEVATIONS IN FEET

Transverse Mercator Projection

ELEVATIONS IN FEET



ELEVATIONS IN FEET
Base Map, 7th Edition 1977

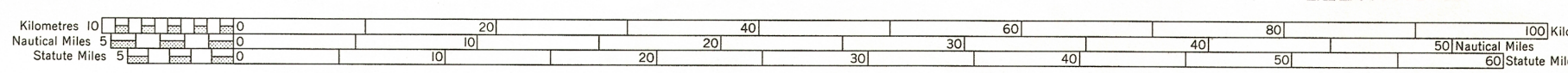
Produced by the Surveys and Mapping Branch,
Department of Energy, Mines and Resources.
© Canada Copyrights Reserved 1977

The boundary between Quebec and Newfoundland in this area
is the crest of the watershed of the rivers flowing into
the Atlantic Ocean; to date of publication it has not
been surveyed nor recommended.

ELEVATIONS IN FEET

(Joins Ashuanipi 23 S.E.)

ELEVATIONS IN FEET



Copies may be obtained from the Canada Map Office,
Department of Energy, Mines and Resources, Ottawa,
or your nearest map dealer.

ELEVATIONS IN FEET
DYKE LAKE
N.T.S. No. 23 N.E.