

CANADA
DEPARTMENT OF
ENERGY, MINES AND RESOURCES
SURVEYS AND MAPPING BRANCH
(Joins Canapiscu 23 N.W.)

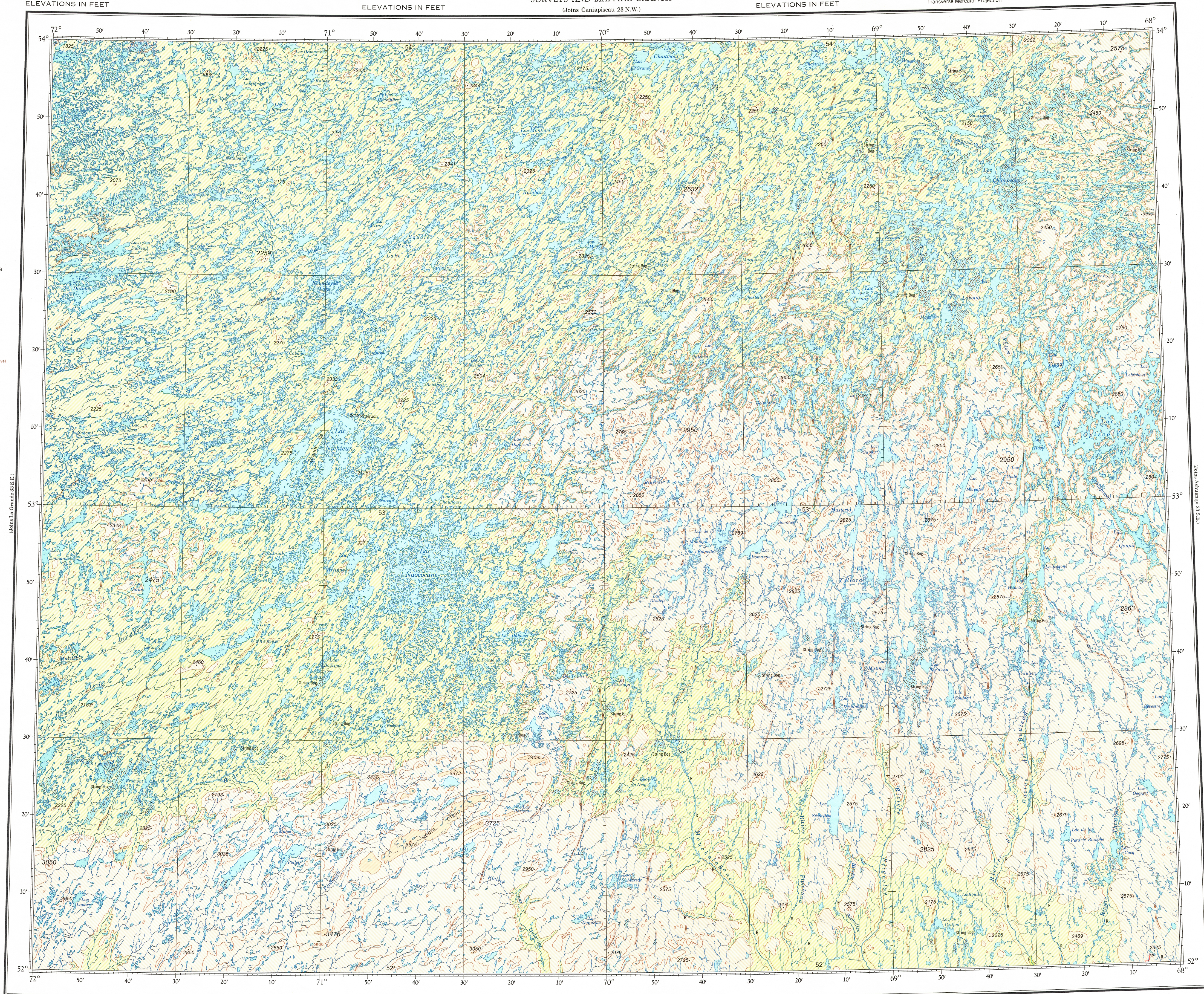
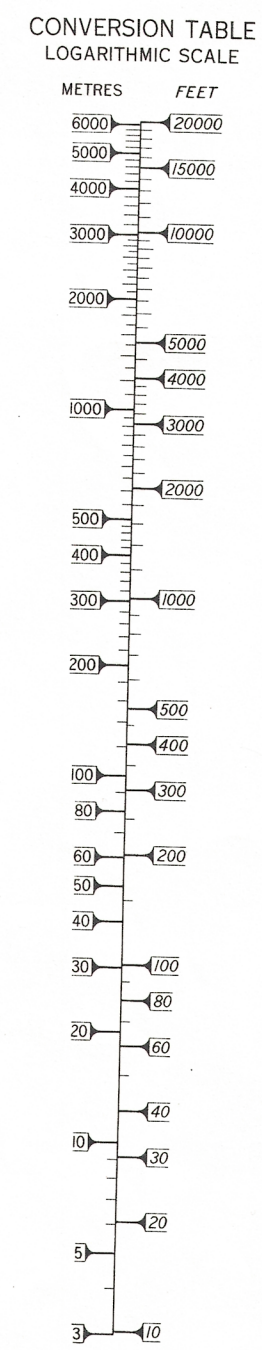
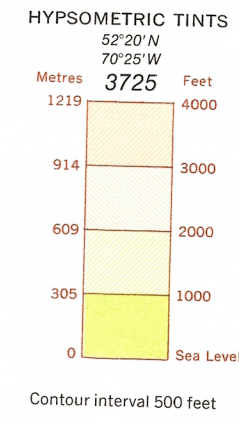
NICHICUN
ELEVATIONS IN FEET

ELEVATIONS IN FEET

ELEVATIONS IN FEET

Transverse Mercator Projection

ELEVATIONS IN FEET



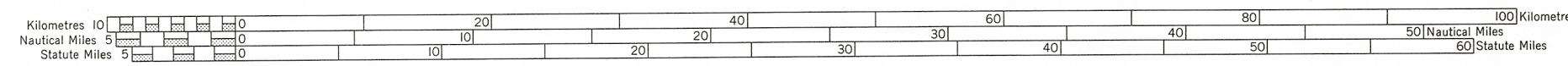
ELEVATIONS IN FEET
Base Map, 6th Edition 1975

Produced by the Surveys and Mapping Branch,
Department of Energy, Mines and Resources.
© Canada Copyrights Reserved 1975

ELEVATIONS IN FEET

(Joins Plékipi 22 N.W.)

ELEVATIONS IN FEET



Copies may be obtained from the Canada Map Office,
Department of Energy, Mines and Resources, Ottawa,
or your nearest map dealer.

ELEVATIONS IN FEET
NICHICUN
N.T.S. No. 23 S.W.