

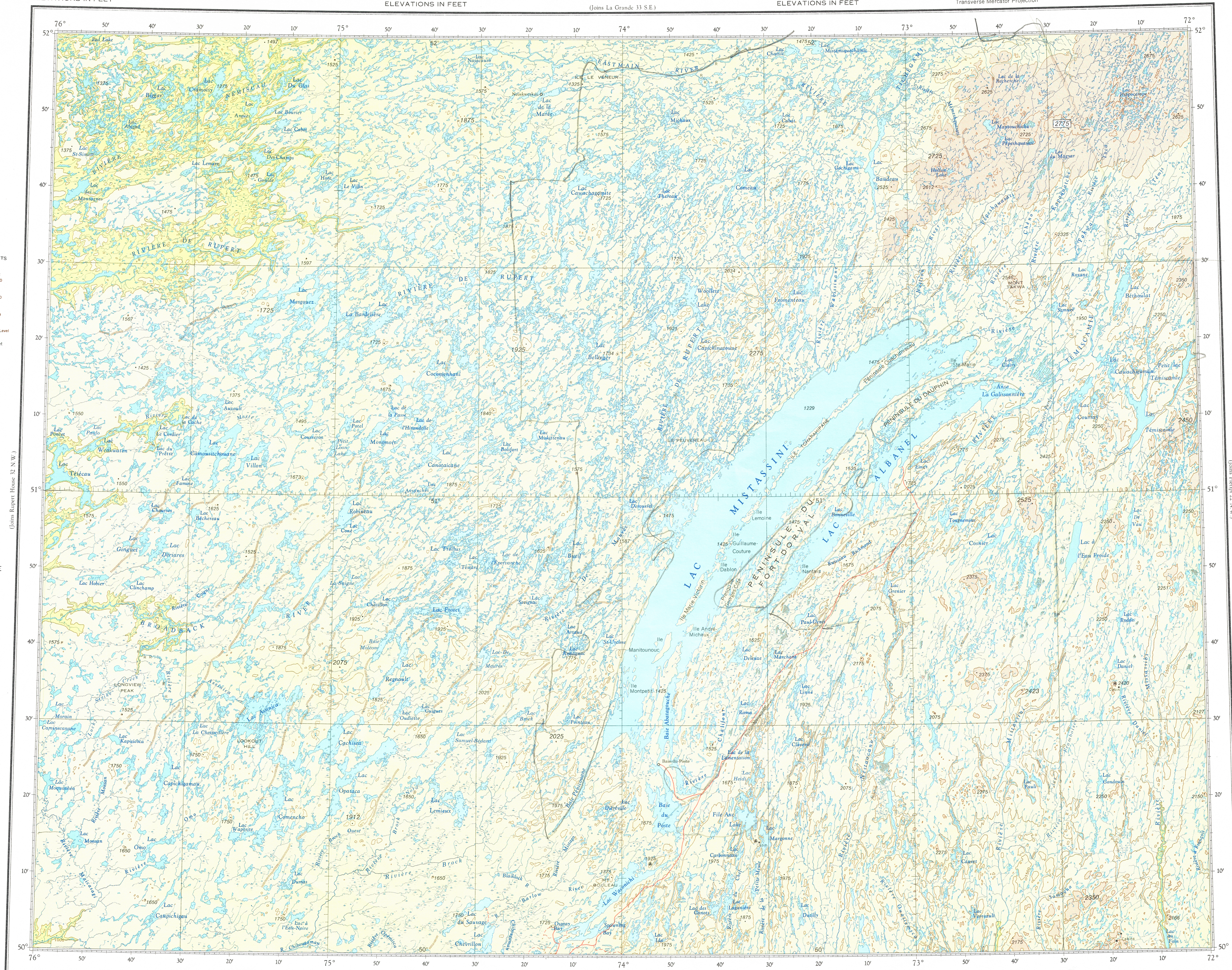
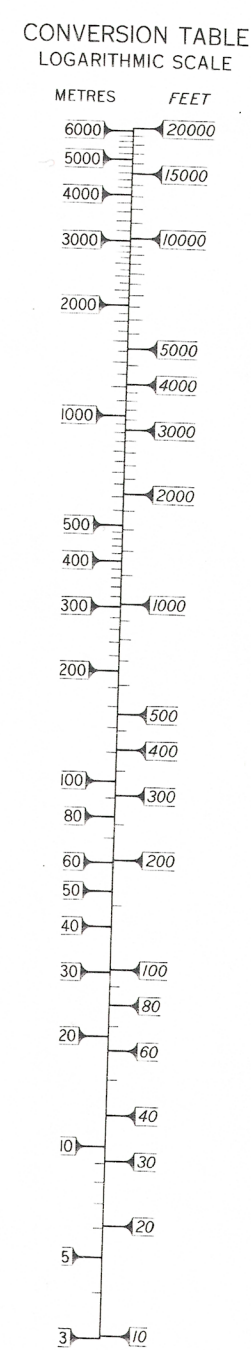
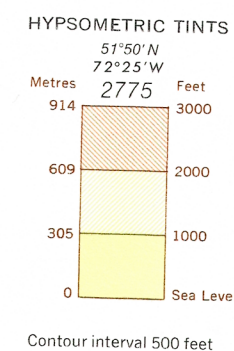
MISTASSINI
ELEVATIONS IN FEET

CANADA
DEPARTMENT OF
ENERGY, MINES AND RESOURCES
SURVEYS AND MAPPING BRANCH
(Joins La Grande 33 S.E.)

ELEVATIONS IN FEET

Transverse Mercator Projection

ELEVATIONS IN FEET



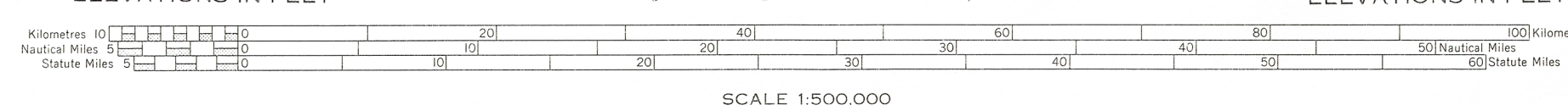
ELEVATIONS IN FEET
Base Map 8th Edition 1974

Produced by the Surveys and Mapping Branch,
Department of Energy, Mines and Resources,
© Canada Copyrights Reserved 1974

ELEVATIONS IN FEET

(Joins Chibougamau - Roberval 32 S.E.)

ELEVATIONS IN FEET



Copies may be obtained from the Canada Map Office,
Department of Energy, Mines and Resources, Ottawa,
or your nearest map dealer.

ELEVATIONS IN FEET
MISTASSINI
N.T.S. No. 32 N.E.