

KOWKASH - MARTIN FALLS
ELEVATIONS IN FEET

CANADA
DEPARTMENT OF
ENERGY, MINES AND RESOURCES
SURVEYS AND MAPPING BRANCH
(Joins Attawapiskat 43 S.W.)

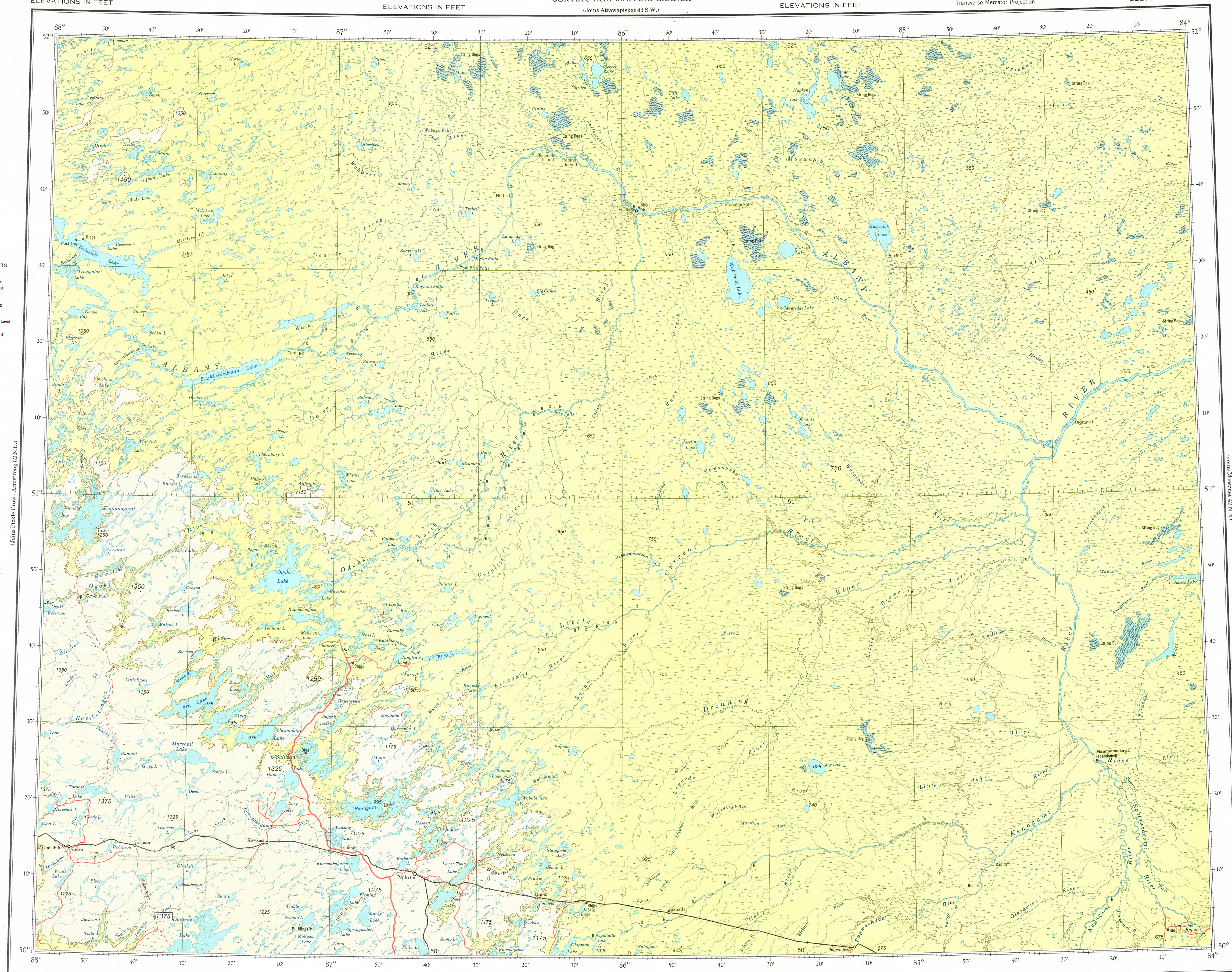
ELEVATIONS IN FEET

Transverse Mercator Projection

ELEVATIONS IN FEET

HYPSONETRIC TINTS
50' 05" W
87° 35' W
Metres 1375 Feet 2000
609 1000
305 1000
0 Sea Level
Contour interval 500 feet

CONVERSION TABLE
LOGARITHMIC SCALE
METRES FEET
6000 20000
5000 15000
4000 13000
3000 10000
2000 6500
1500 5000
1000 3300
800 2600
600 2000
400 1300
300 1000
200 650
150 500
100 330
80 260
60 200
40 130
30 100
20 65
15 50
10 33
8 26
6 20
4 13
3 10
2 6
1 5
0 3
0 2
0 1



ELEVATIONS IN FEET
Base Map, 5th Edition 1975

Produced by the Survey and Mapping Branch,
Department of Energy, Mines and Resources.
© Canada Copyrights Reserved 1975

ELEVATIONS IN FEET

(Joins Geraldton - White River 42 S.W.)

ELEVATIONS IN FEET

Kilometres 10 20 30 40 50 60 70 80 90 100
Nautical Miles 5 10 15 20 25 30 35 40 45 50
Statute Miles 5 10 15 20 25 30 35 40 45 50

SCALE 1:500,000

Copies may be obtained from the Canada Map Office,
Department of Energy, Mines and Resources, Ottawa,
or your nearest map dealer.

ELEVATIONS IN FEET
KOWKASH - MARTIN FALLS
N.T.S. No. 42 N.W.