

# ATTAWAPISKAT

ELEVATIONS IN FEET

## CANADA DEPARTMENT OF ENERGY, MINES AND RESOURCES SURVEYS AND MAPPING BRANCH (Joins Winisk River 43 N.W.)

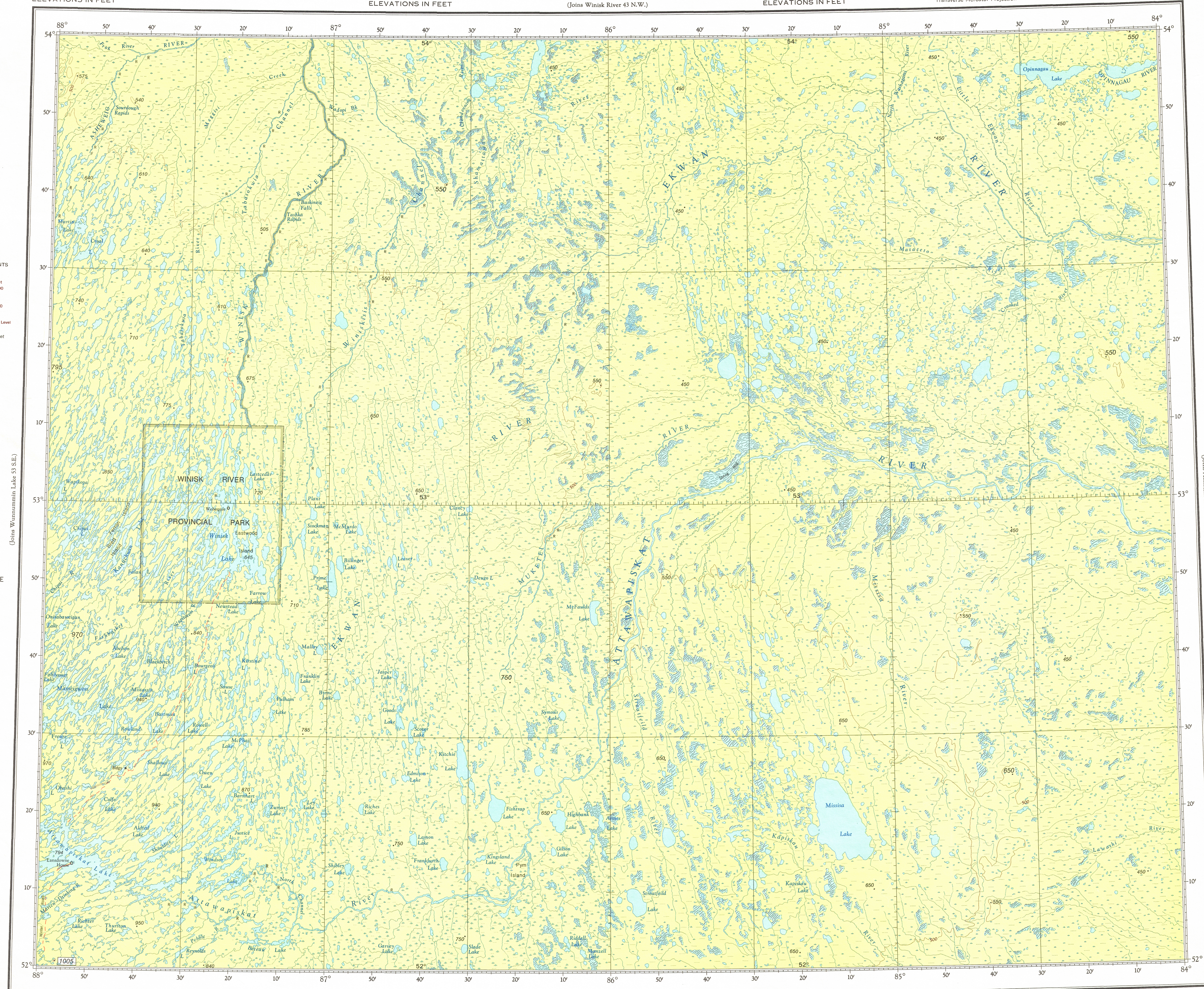
ELEVATIONS IN FEET

Transverse Mercator Projection

ELEVATIONS IN FEET

**HYPSONETRIC TINTS**  
87°00'W 87°35'W  
Metres 609 1005 1500  
Feet 2000 3300 5000  
Sea Level  
Contour interval 500 feet

**CONVERSION TABLE**  
LOGARITHMIC SCALE  
METRES FEET  
6000 20000  
5000 16500  
4000 13100  
3000 9800  
2000 6600  
1000 3300  
500 1650  
400 1310  
300 980  
200 660  
100 330  
80 264  
60 198  
40 131  
30 98  
20 66  
10 33  
5 16.5  
3 9.8  
2 6.6  
1 3.3



ELEVATIONS IN FEET

© 1980, Her Majesty the Queen in Right of Canada,  
Department of Energy, Mines and Resources.

ELEVATIONS IN FEET

(Joins Kowkash - Martin Falls 42 N.W.)

ELEVATIONS IN FEET

Kilometres 0 20 40 60 80 100  
Nautical Miles 0 20 40 60 80 100  
Statute Miles 0 20 40 60 80 100

SCALE 1:500,000

Produced by the Survey and Mapping Branch,  
Copies may be obtained from the Canada Map Office,  
Department of Energy, Mines and Resources, Ottawa,  
or your nearest map dealer.

ELEVATIONS IN FEET  
**ATTAWAPISKAT**  
N.T.S. No. 43 S.W.  
Base Map, 6th Edition 1980