

KENORA - FORT FRANCES ELEVATIONS IN FEET

CANADA DEPARTMENT OF ENERGY, MINES AND RESOURCES SURVEYS AND MAPPING BRANCH (Joins English River S2 N.W.)

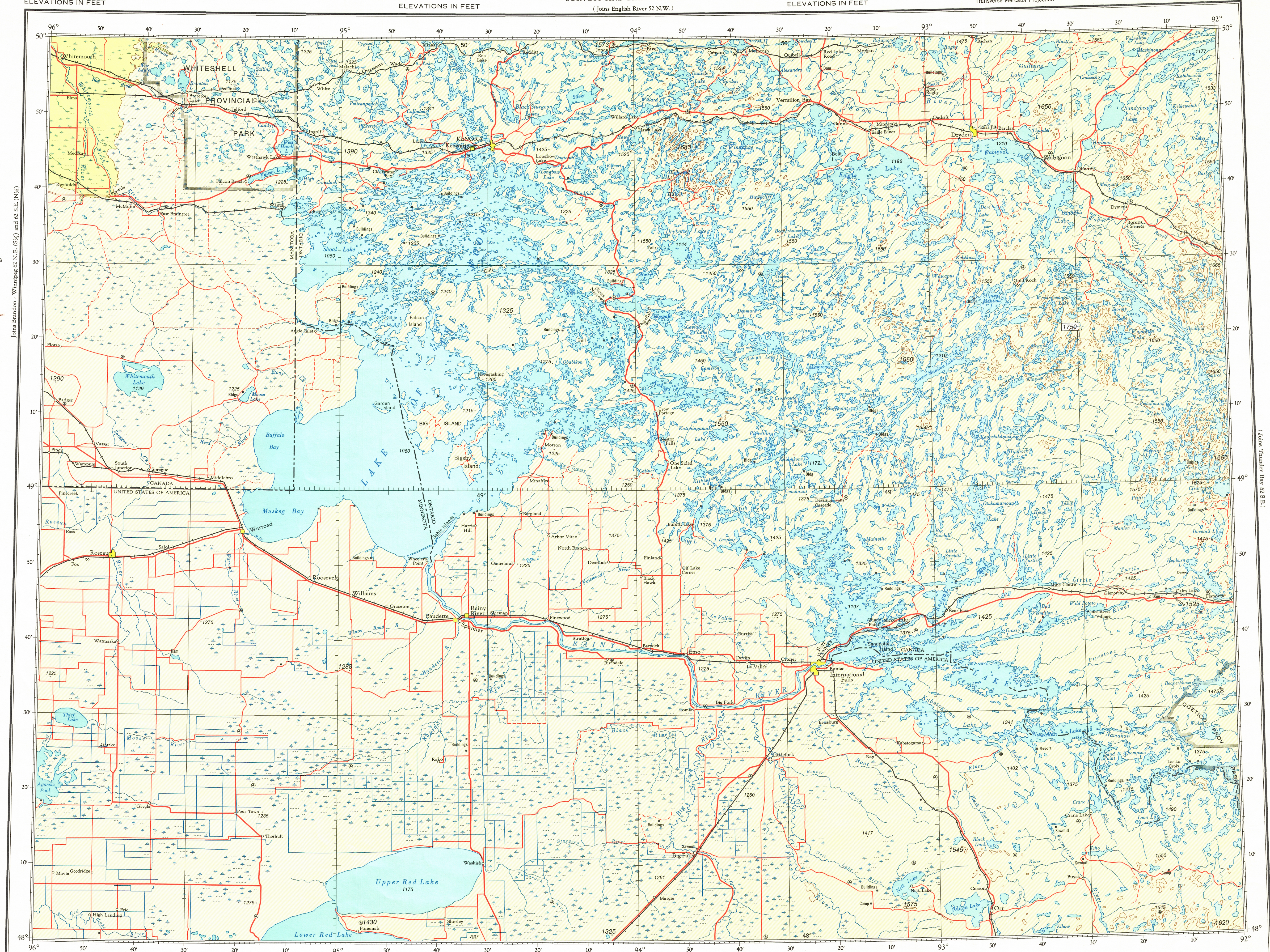
ELEVATIONS IN FEET

Transverse Mercator Projection

ELEVATIONS IN FEET

HYPSONETRIC TINTS
49°20'N
92°30'W
1750
609
1750
2000
305
1000
0
Sea Level
Contour interval 500 feet

CONVERSION TABLE
LOGARITHMIC SCALE
METRES FEET
8000 20000
5000 15000
4000 10000
3000 7000
2000 5000
1000 3000
500 1500
400 1000
300 700
200 500
100 300
80 200
60 100
40 60
30 40
20 30
10 20
5 10
3 5
2 3
1 2



ELEVATIONS IN FEET
Base Map, 6th Edition 1977

Produced by the Surveys and Mapping Branch,
Department of Energy, Mines and Resources.
© Canada Copyrights Reserved 1977

ELEVATIONS IN FEET

Kilometres 0 10 20 30 40 50 60 70 80 90 100
Nautical Miles 0 10 20 30 40 50 60 70 80 90 100
Scale 1:500,000

ELEVATIONS IN FEET

Copies may be obtained from the Canada Map Office,
Department of Energy, Mines and Resources, Ottawa,
or your nearest map dealer.

ELEVATIONS IN FEET
KENORA - FORT FRANCES
N.T.S. No. 52 S.W.