

FLIN FLON
ELEVATIONS IN FEET

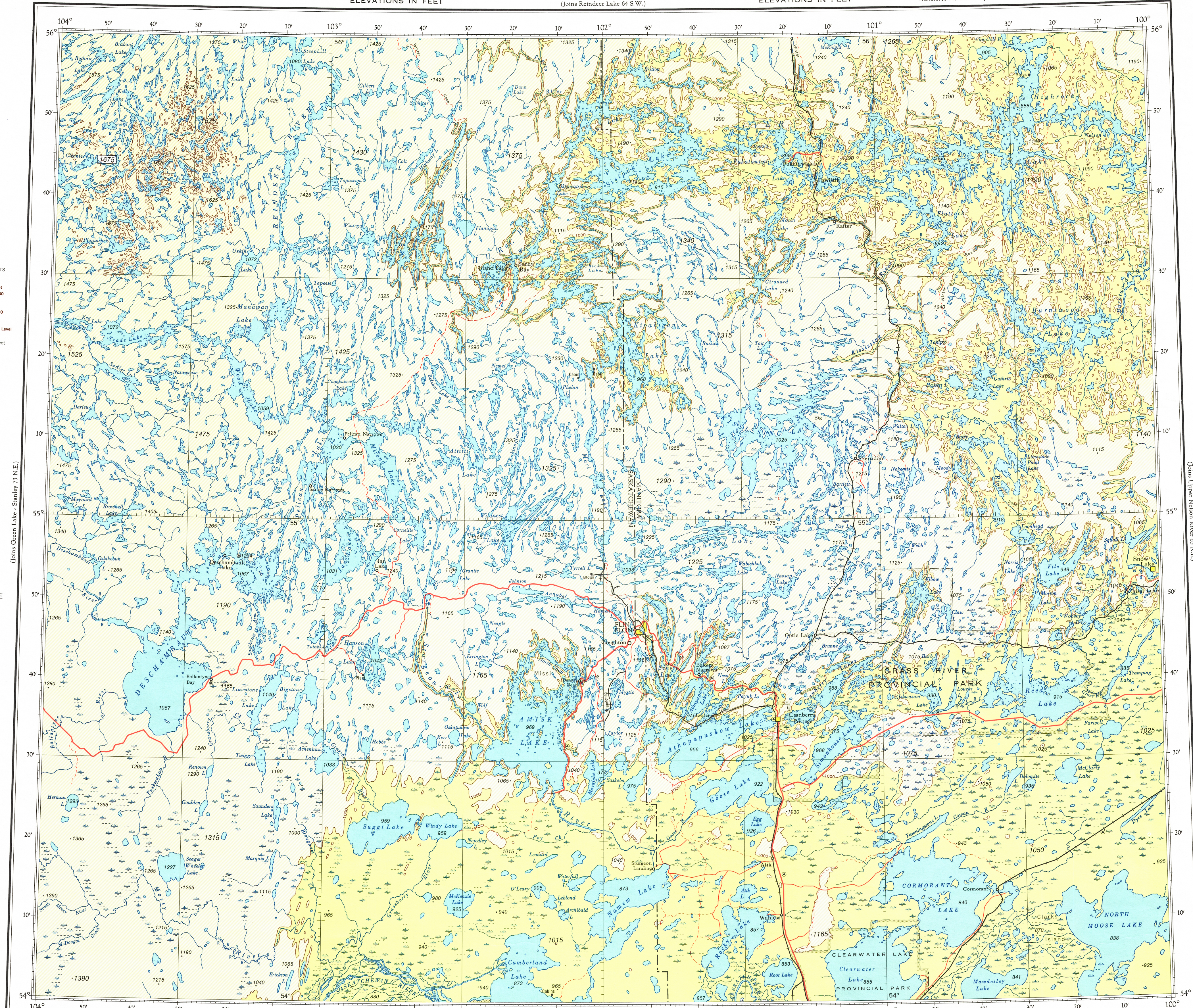
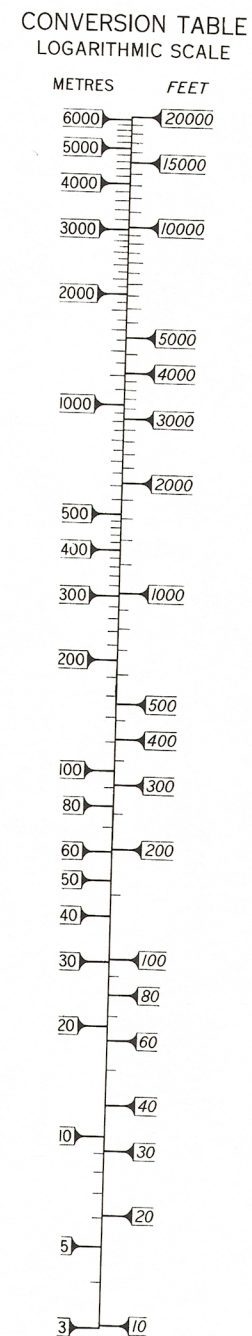
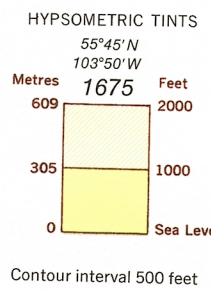
CANADA
DEPARTMENT OF
ENERGY, MINES AND RESOURCES
SURVEYS AND MAPPING BRANCH

(Joins Reindeer Lake 64 S.W.)

ELEVATIONS IN FEET

Transverse Mercator Projection

ELEVATIONS IN FEET



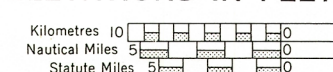
ELEVATIONS IN FEET

© 1979 Her Majesty the Queen in Right of Canada.
Department of Energy, Mines and Resources.

ELEVATIONS IN FEET

(Joins Pasquia Hills - Swan River 63 S.W.)

ELEVATIONS IN FEET



SCALE 1:500,000

Produced by the Surveys and Mapping Branch.
Copies may be obtained from the Canada Map Office,
Department of Energy, Mines and Resources, Ottawa,
or your nearest map dealer.

ELEVATIONS IN FEET

FLIN FLON
N.T.S. No. 63 N.W.

Base Map, 6th Edition 1979