

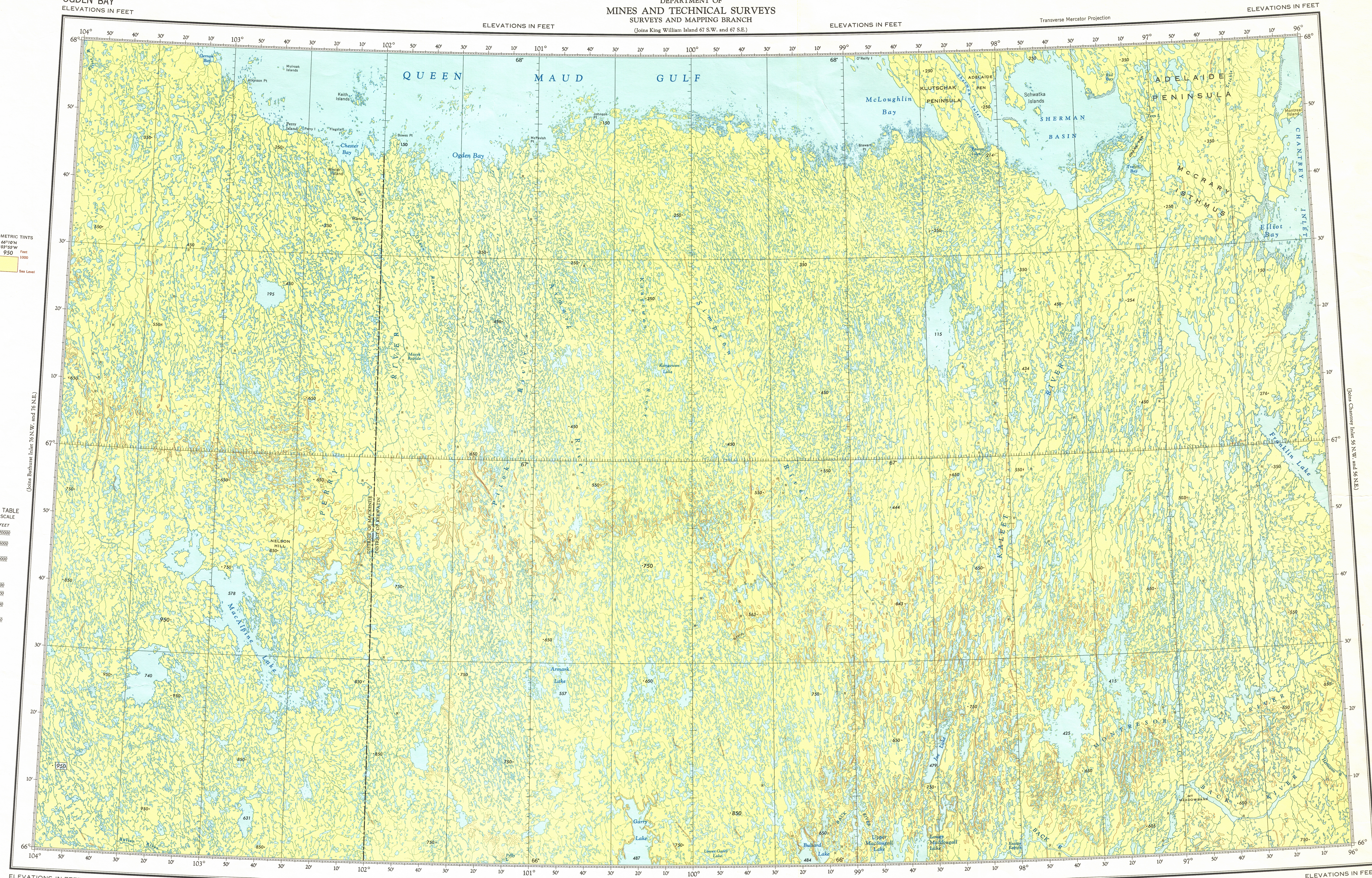
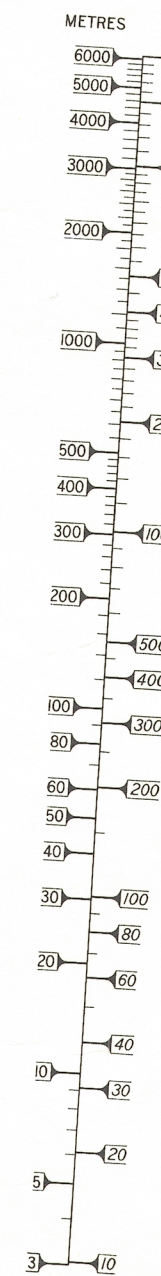
OGDEN BAY  
ELEVATIONS IN FEET

CANADA  
DEPARTMENT OF  
MINES AND TECHNICAL SURVEYS  
SURVEYS AND MAPPING BRANCH  
(Joins King William Island 67 S.W. and 67 S.E.)

ELEVATIONS IN FEET

HYPSONETRIC TINTS  
66°10'N  
103°55'W  
950  
300  
1000  
0  
Sea Level

CONVERSION TABLE  
LOGARITHMIC SCALE



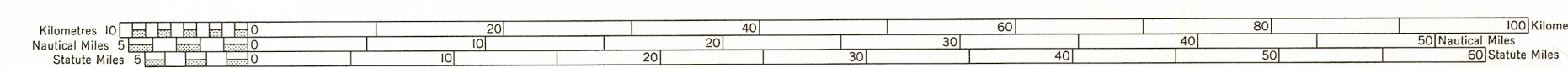
ELEVATIONS IN FEET  
Base Map, 5th Edition 1966

Produced by the Surveys and Mapping Branch,  
Department of Mines and Technical Surveys.

ELEVATIONS IN FEET

(Joins Aberdeen Lake 66 S.W. and 66 S.E.)

ELEVATIONS IN FEET



SCALE 1:500,000

Copies may be obtained from the Map Distribution Office,  
Department of Mines and Technical Surveys, Ottawa.

ELEVATIONS IN FEET

OGDEN BAY

N.T.S. No. 66 N.W. and 66 N.E.