

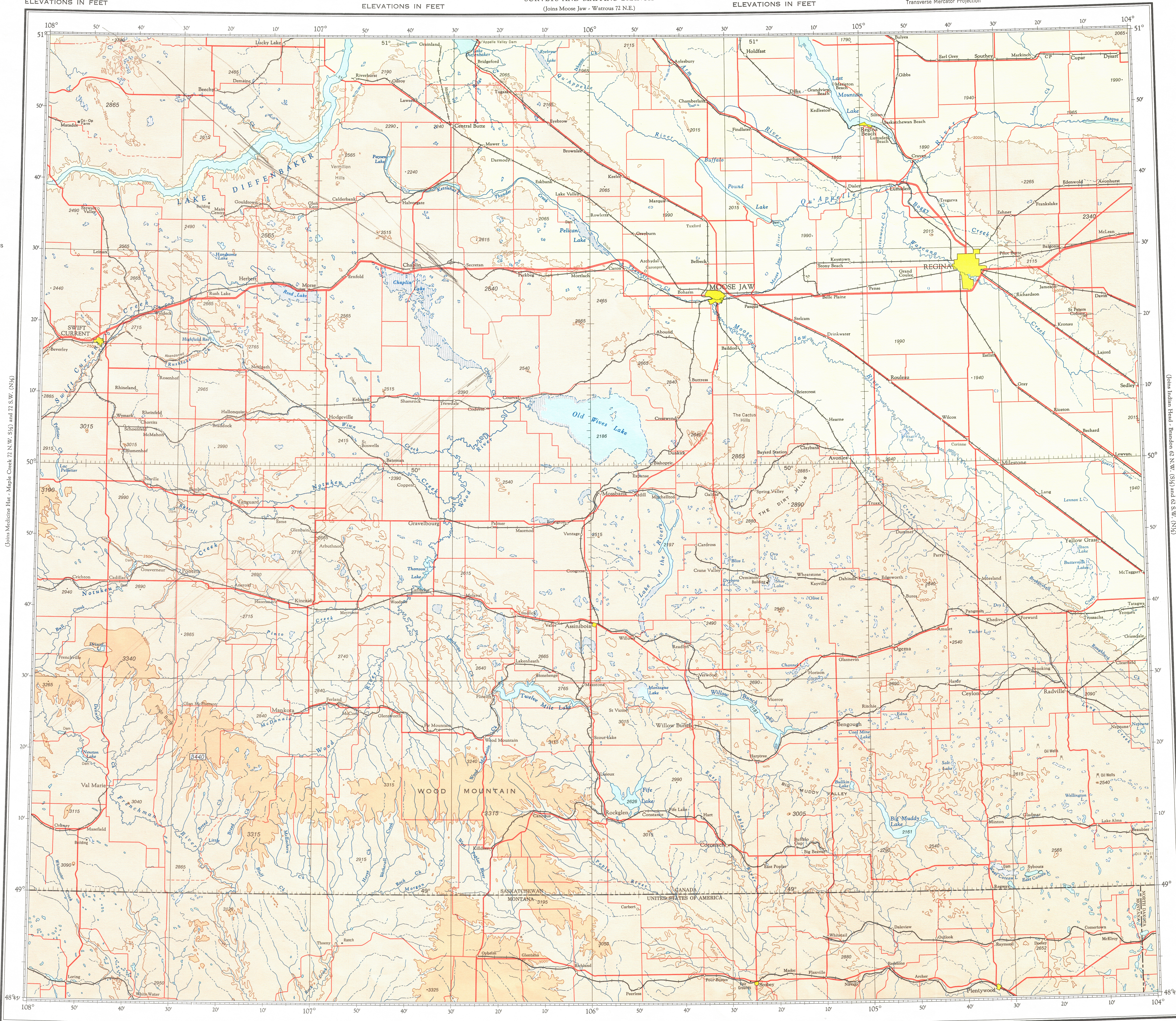
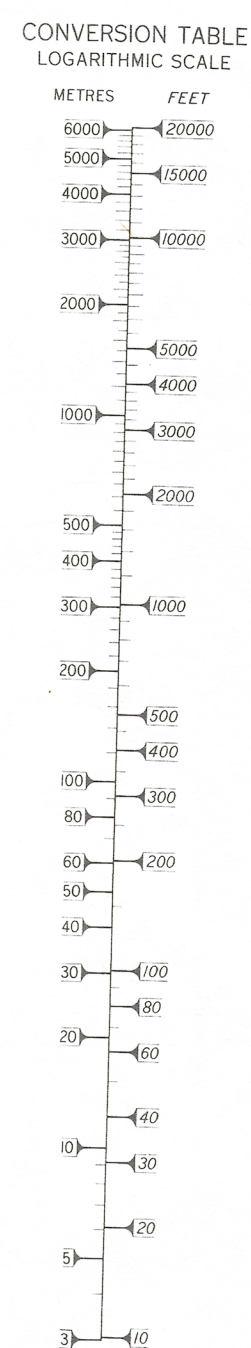
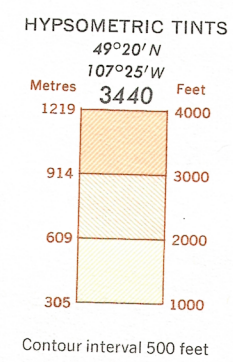
SWIFT CURRENT - REGINA
ELEVATIONS IN FEET

CANADA
DEPARTMENT OF
ENERGY, MINES AND RESOURCES
SURVEYS AND MAPPING BRANCH
(Joins Moose Jaw - Watrous 72 N.E.)

ELEVATIONS IN FEET

Transverse Mercator Projection

ELEVATIONS IN FEET

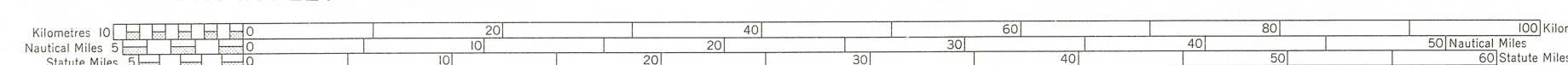


(Joins Indian Head - Brandon 62 N.W. (S $\frac{1}{2}$) and 62 S.W. (N $\frac{1}{2}$))

Produced by the Survey and Mapping Branch,
Department of Energy, Mines and Resources.
© Canada Copyrights Reserved 1977

ELEVATIONS IN FEET

ELEVATIONS IN FEET



SCALE 1:500,000

Copies may be obtained from the Canada Map Office,
Department of Energy, Mines and Resources, Ottawa,
or your nearest map dealer.

ELEVATIONS IN FEET
SWIFT CURRENT - REGINA
N.T.S. No. 72 N.E. (S $\frac{1}{2}$) and 72 S.E. (N $\frac{1}{2}$)
Base Map, 6th Edition 1977

This document was produced
by scanning the original publication.

Ce document est le produit d'une
numérisation par balayage
de la publication originale.