

BATHURST INLET  
ELEVATIONS IN FEET

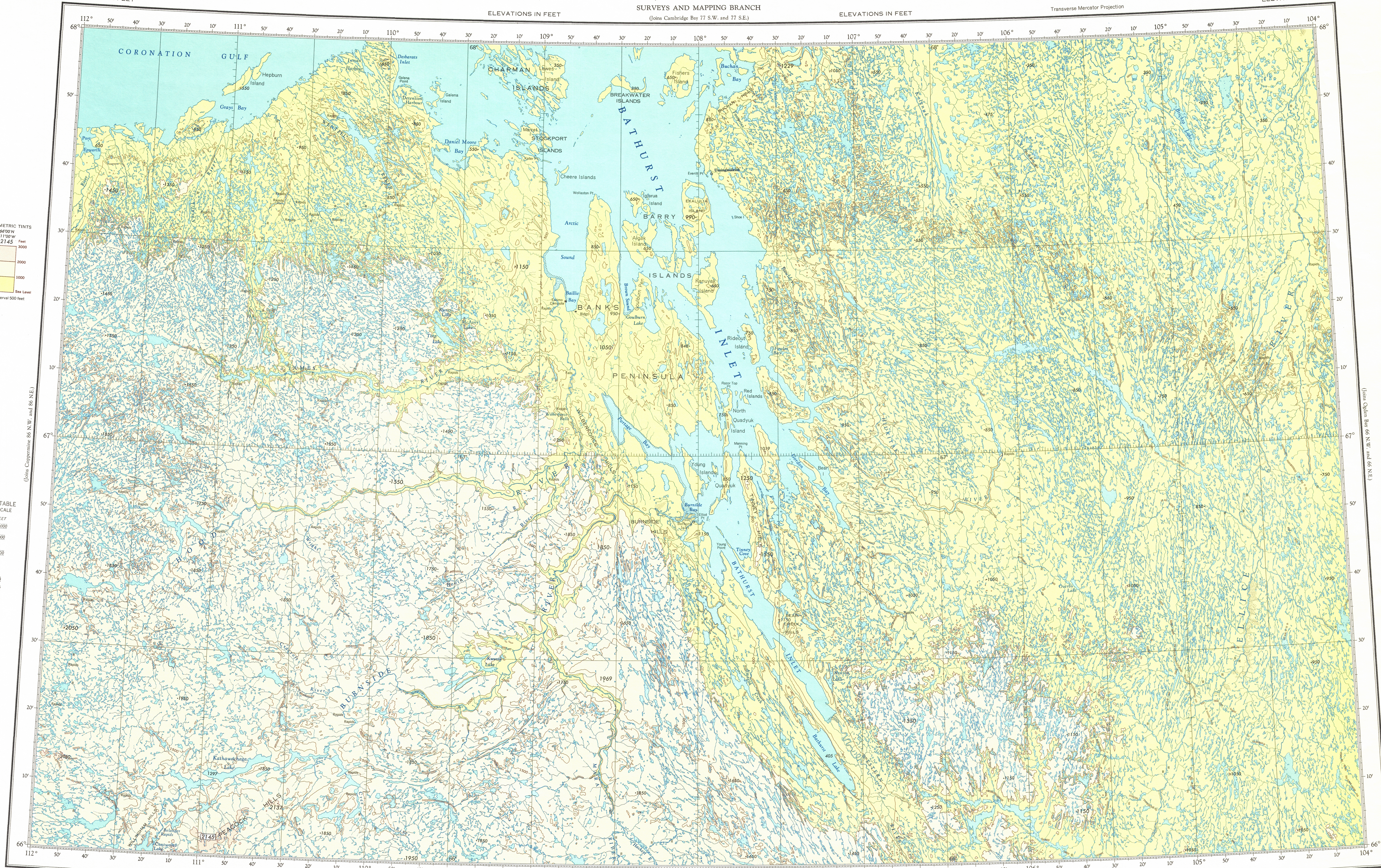
CANADA  
DEPARTMENT OF  
ENERGY, MINES AND RESOURCES  
SURVEYS AND MAPPING BRANCH  
(Joins Cambridge Bay 77 S.W. and 77 S.E.)

ELEVATIONS IN FEET

Transverse Mercator Projection

HYPSONETRIC TINTS  
6400 N  
17700 W  
2145  
Feet  
3000  
2000  
1000  
Sea Level  
Contour interval 500 feet

CONVERSION TABLE  
LOGARITHMIC SCALE  
METRES FEET  
20000 65616  
15000 49213  
10000 32808  
5000 16404  
2000 6561  
1000 3281  
500 1640  
200 656  
100 328  
50 164  
20 65  
10 32  
5 16  
2 3  
1 0



ELEVATIONS IN FEET  
Base Map, 6th Edition 1977

Produced by the Surveys and Mapping Branch,  
Department of Energy, Mines and Resources  
© Canada Copyrights Reserved 1977

ELEVATIONS IN FEET

(Joins Upper Back River 76 S.W. and 76 S.E.)

ELEVATIONS IN FEET

Kilometres 0 10 20 30 40 50 60 70 80 90 100  
Statute Miles 0 10 20 30 40 50 60 70 80 90 100  
Scale 1:500,000

Copies may be obtained from the Canada Map Office,  
Department of Energy, Mines and Resources, Ottawa,  
or your nearest map dealer.

ELEVATIONS IN FEET  
BATHURST INLET  
N.T.S. No. 76 N.W. and 76 N.E.